

Type CNM-01 PC Board Type Fuse Clip Mini Auto Blade Fuses



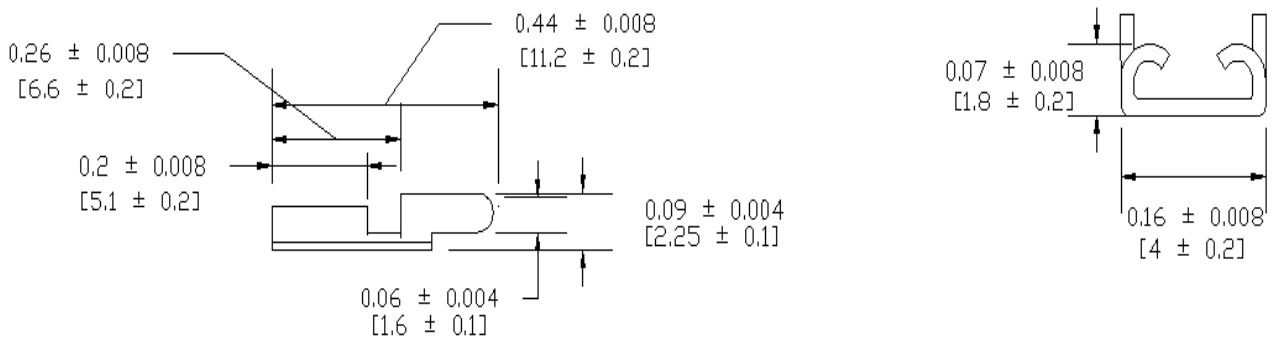
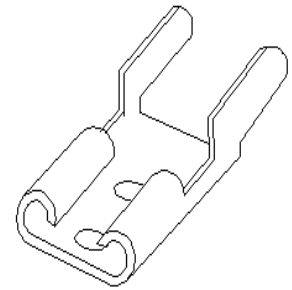
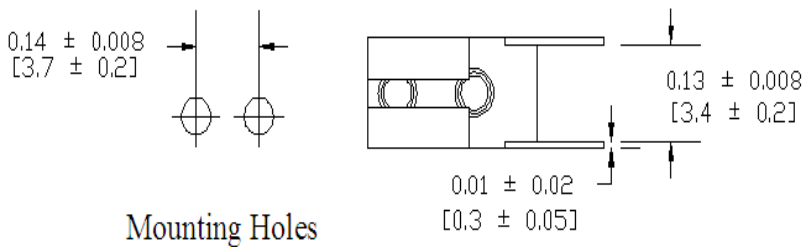
www.optifuse.com (619) 593-5050

Specifications:

- Rating: 15A, 250V AC
- Body Material: Phosphor bronze
- Finish: Tin-plated or Nickel-plated
(For Matte Tin-plated add **-CE** at end of part number ...ie. CNM-01-**CE**)

For use with Type **APM** Fuses (Mini-Automotive Blade Type)

Mechanical Dimensions: Inches [mm]



Warning:



-Operation beyond the specified maximum ratings or improper use may result in damage and possible electrical arcing and/or flame.

-Avoid contact of device with chemical solvent. Prolonged contact will damage the device performance.

Note: All specifications subject to change without notice.

Rev C 12/2015 - Page: 1/1
Code G02 – 01H