

## LENS MOUNTS FOR 3mm & 5mm LEDs

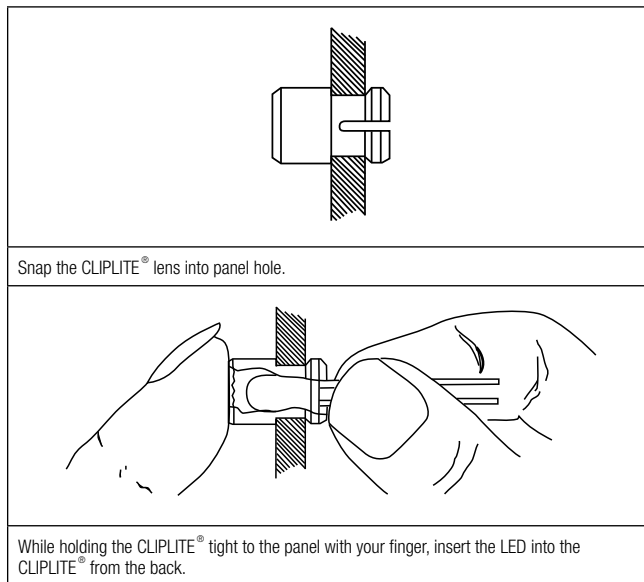
### SPECIFICATIONS

<b>MATERIAL</b>	Lens - Polycarbonate Spacer - Polypropylene (U.L. Listed Materials)
<b>DESIGN</b>	Standard and low profile lenses with fresnel rings and striated lines. CLR 301 Low Profile Lens is available without fresnel rings.
<b>MOUNTING</b>	Mounts through front of panel. Mounting holes should be deburred but not chamfered.  3mm (SML 190, SMB 200) mounts in a $.171" \pm .002"$ (4.34mm) hole on 1/4" centers. Panel thickness for SML 190, 1/32" to 1/16"; SMB 200, 1/16" to 1/8". 5mm (CLF 280, CLB 300, CLR 301) mounts in a $.250" \pm .002"$ (6.35mm) hole on 3/8" centers. Panel thickness for CLF 280, 1/16" to 1/8"; CLB 300 and CLR 301, 1/32" to 1/4"; for panels less than 3/16", use SPC 125 spacer.

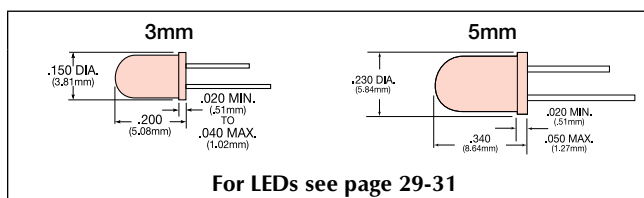


U.S. & Foreign Patents Issued and Pending

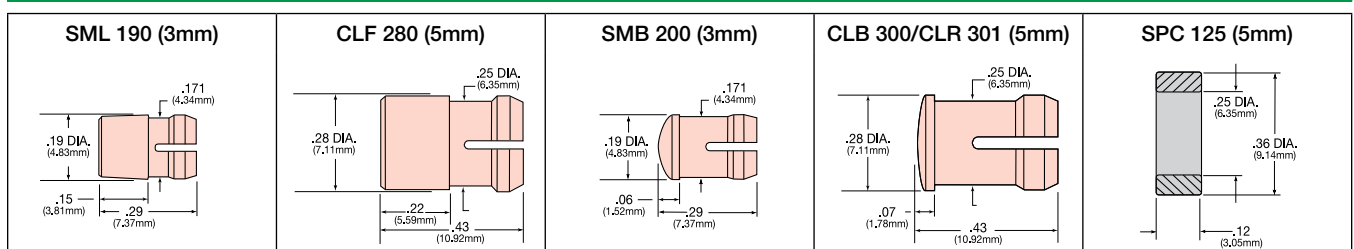
### SIMPLE TWO-STEP INSTALLATION



### RECOMMENDED LEDs



### OUTLINE DRAWING



### VISIBILITY

CLIPLITE<sup>®</sup> lenses produce up to 180 degrees of viewing angle using standard 3mm and 5mm LEDs.

### BRIGHTNESS

The CLIPLITE<sup>®</sup> lens utilizes striated lines and fresnel rings to increase apparent brightness up to 125% and viewing angle up to 180 degrees with either diffused or nondiffused LEDs. A low profile lens without rings or lines is available for direct sunlight applications.

### PROTECTION

CLIPLITE<sup>®</sup> lenses help prevent IC failures caused by electrostatic discharge (ESD). Simply walking across a carpet can generate 10,000 volts. Introduction of this ESD through an exposed panel mounted LED is capable of damaging or destroying a semiconductor. A CLIPLITE<sup>®</sup> mounted LED helps guard components from ESD up to 16kV while affording the LED physical protection.

### INSTALLATION

CLIPLITE<sup>®</sup>, standard or low profile, requires no assembly tools; just snap into a panel opening and insert LED. Cost effective operation is complete in only 6 seconds.

### ORDERING CODES

CLF 280		RTP	
MODEL		COLOR	
SML 190	(3mm) Standard Height Fresnel Lens	RTP	Red Transparent
SMB 200	(3mm) Low Profile Fresnel Lens	ATP	Amber Transparent
CLF 280	(5mm) Standard Height Fresnel Lens	GTP	Green Transparent
CLB 300	(5mm) Low Profile Fresnel Lens	BTP	Blue Transparent
CLR 301	(5mm) Low Profile Plain Fresnel Lens	YTP	Yellow Transparent
SPC 125	(Spacer for CLB 300 and CLR 301)	CTP	Clear Transparent