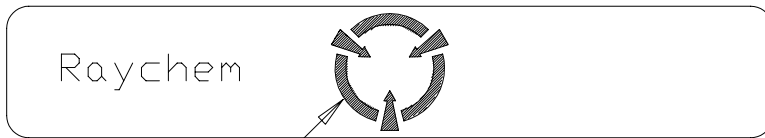
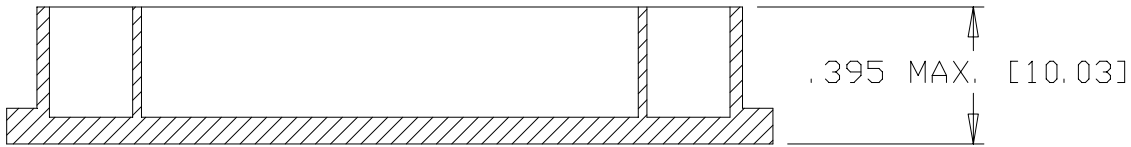
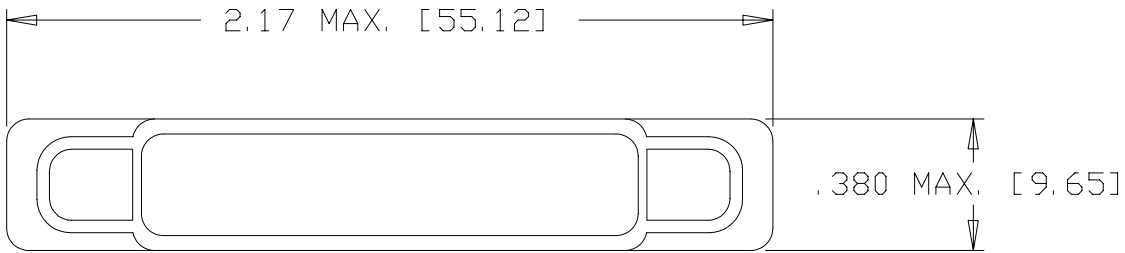


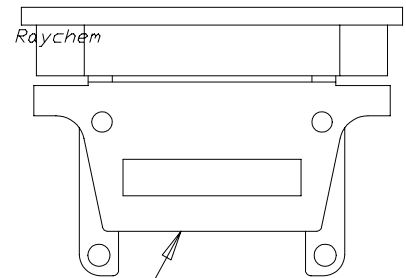
REVISIONS			
LTR	DESCRIPTION	DATE	APPROVED
N/C	INITIAL RELEASE PER ECN# T-17740	92 SEPT 8	Z. TEMAN
A	REVISED PER ECN# T-18521		

NOTES:

- MATERIAL: LNP STATKON-FE (VIRGIN) HIGH DENSITY POLYETHYLENE.
COLOR: BLACK
 - RESISTIVITY OF MATERIAL ELECTRICALLY CONDUCTIVE PER MIL-STD-1686
- ③ VIEW SHOWING TYPICAL INSTALLATION (ROTATED 180°).



SYMBOL PER MIL-STD-1686A



(PLUG CONNECTOR) ③

If this document is printed it becomes uncontrolled.
Check with the web for latest revision.

Raychem

SPECIFICATION CONTROL DRAWING © Raychem Corporation 1992

UNLESS OTHERWISE SPECIFIED
DIMENSIONS ARE IN INCHES.
METRIC DIMENSIONS ARE
IN BRACKETS.

DECIMALS

.XXX ± — [— mm]
.XX ± — [— mm]

ANGLES

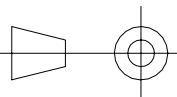
.X ± —

WEIGHT

1.74 g MAX.

DRAWN	J. B. K.	92 AUG 10
CHECKED		
APPROVED		
APPROVED	Z. TEMAN	92 SEPT 8
CAD NAME	009231-1	

THIRD ANGLE
PROJECTION



RAYCHEM CORPORATION
300 CONSTITUTION DRIVE
MENLO PARK, CALIFORNIA 94025

TITLE

CAP, DUST, PLUG,
1 INCH, CONDUCTIVE,
MTC SERIES

PCN: 423715

SIZE	CODE IDENT. NO.	DWG. NO.	REV
A	06090	CHA-0267	A

DO NOT SCALE THIS DRAWING

SHEET 1 OF 1