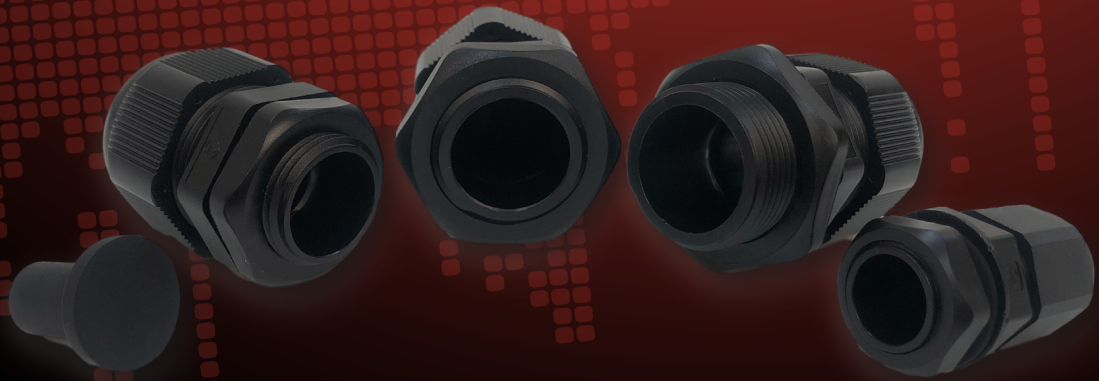




NEW PRODUCT BULLETIN 670

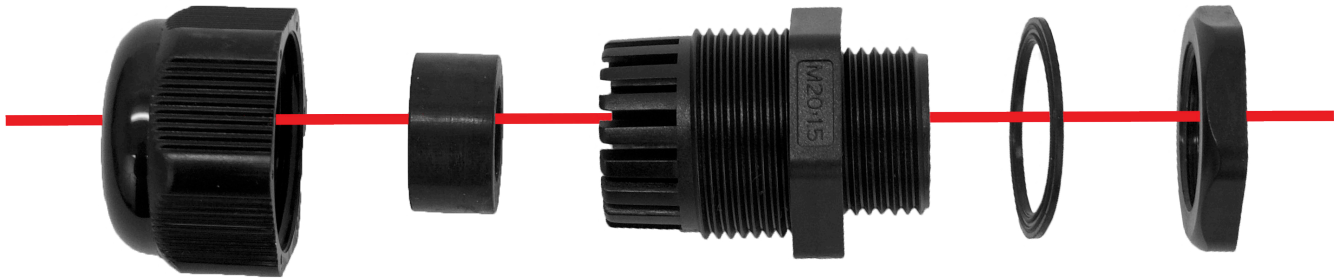
SEALED
**CABLE
GLAND**
CORD GRIPS



Switchcraft[®]
CONXALL[®]

HARSH ENVIRONMENT CONNECTIVITY SOLUTIONS

5555 N ELSTON AVE | CHICAGO, IL | 773.792.2700 | SALES@SWITCHCRAFT.COM | WWW.SWITCHCRAFT.COM



NEW! PRODUCT LINE

CORD GRIPS FOR HARSH ENVIRONMENTS. Switchcraft connectors have been proven to withstand harsh environments for decades. For applications where a hard wired connection is preferred, these cable glands are an easy and cost effective way to ensure your device is sealed and a strong strain relief is provided. New cable glands from Switchcraft are available in a variety of sizes to fit the needs of your project, including options to use a cable gland for 2 or 3 separate cables.

IP68 RATED WATER RESISTANCE

Provides a watertight seal when properly mated



FIRM GRIP

Tightening nut compresses strain relief for a firm grip



SWITCHCRAFT QUALITY

Durable components and materials to handle harsh environments

SPECIFICATIONS

Seal Rating: IP68

Temp. Rating: -40°C to 100°C

Materials:

Shell: Black Thermoplastic

O Ring: Silicone

Seal: Silicone

PART NUMBER	THREAD SIZE	CABLE OPENINGS	ACCEPTED CABLE Ø (MM)
CGM12N26	M12x1.25	1	4.0 to 6.5
CGM16N35	M16x1.5	1	6.0 to 9.0
CGM20N44	M20x1.5	1	5.5 to 11.2
CGM20N63	M20x1.5	1	8.0 to 16.0
CGM25N63	M25x1.5	1	10.0 to 16.0
CGM25N24X2	M25x1.5	2	3.0 to 6.0
CGM25N24X3	M25x1.5	3	3.0 to 6.0
CGPLUG44	Cap for CGM20N44		