

SPECIFICATIONS:

Pressure rating:

150 PSIG (10 BAR) NEMA 4x and 6
(Submersible) IP 68

Materials:

Body & Dome Nut: Nickel Plated Brass

Spline Bushing: PVDF

Form Seal, Insert &

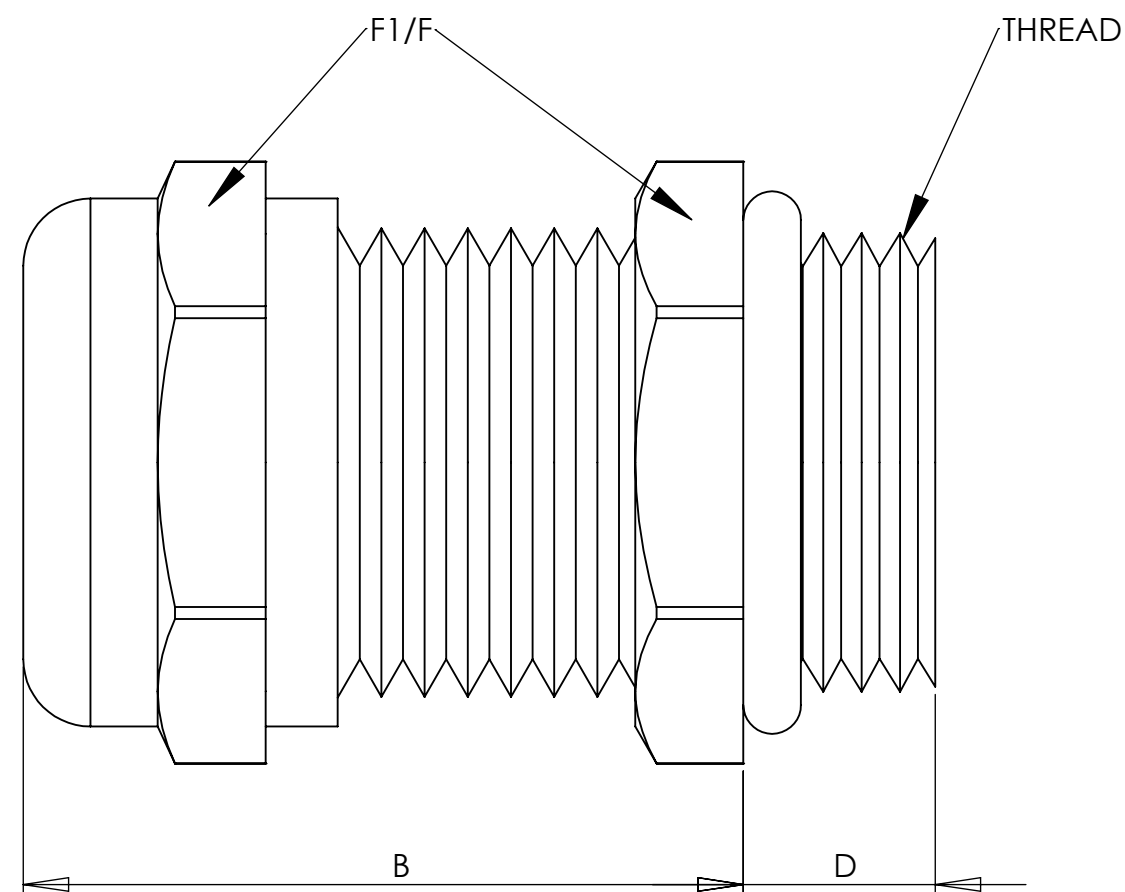
O-Ring: Viton®

Operating Temperature:

-31°F to 302°F (-35°C to 150°C)

Short term 356°F (180°C)

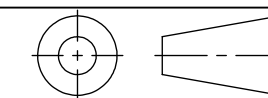
PART NUMBERS	CABLE RANGE inches (mm)	THREAD TYPE AND SIZE For threads specs see page 29	DIMENSIONS INCHES (MM)			
			A Clearance Hole $+0.10^{+0.25}_{0}$	B Body Length	D Thread Length	F1/F Wrenching Flats
CD07AA-RV CD07AR-RV	.11 - .26 (3 - 6.5) .08 - .20 (2 - 5)	PG 7 1/4" NPT	.49 (12.5)	.75 (19)	.20 (5)	.55 (14)
CD09AA-RV CD09AR-RV	.16 - .31 (4 - 8) .08 - .24 (2 - 6)	PG 9	.60 (15.2)	.83 (21)	.24 (6)	.67 (17)
CD09NA-RV CD09NR-RV	.16 - .31 (4 - 8) .08 - .24 (2 - 6)	3/8" NPT	.68 (17.2)	.83 (21)	.59 (15)	.67 (17) .75 (19)
CD11AA-RV CD11AR-RV	.20 - .39 (5 - 10) .11 - .27 (3 - 7)	PG 11	.73 (18.5)	.87 (22)	.24 (6)	.79 (20)
CD13AA-RV CD13AR-RV	.24 - .47 (6 - 12) .20 - .35 (5 - 9)	PG 13.5	.80 (20.3)	.94 (24)	.25 (6.5)	.87 (22)
CD13NA-RV CD13NR-RV	.24 - .47 (6 - 12) .20 - .35 (5 - 9)	1/2" NPT	.83 (21.1)	.94 (24)	.51 (13)	.87 (22) .94 (24)
CD16AA-RV CD16AR-RV	.39 - .55 (10 - 14) .27 - .47 (7 - 12)	PG 16	.88 (22.3)	.91 (23)	.25 (6.5)	.94 (24)
CD21AA-RV CD21AR-RV	.51 - .71 (13 - 18) .35 - .63 (9 - 16)	PG 21	1.12 (28.4)	.94 (24)	.27 (7)	1.18 (30)
CD21NA-RV CD21NR-RV	.51 - .71 (13 - 18) .35 - .63 (9 - 16)	3/4" NPT	1.05 (26.7)	.98 (25)	.51 (13)	1.18 (30)
CD29AA-RV CD29AR-RV	.71 - .98 (18 - 25) .51 - .79 (13 - 20)	PG 29	1.47 (37.3)	1.14 (29)	.31 (8)	1.57 (40)
CD36AA-RV CD36AR-RV	.87 - 1.26 (22 - 32) .79 - 1.02 (20 - 26)	PG 36	1.85 (47.0)	1.38 (35)	.31 (8)	1.97 (50)
CD42AA-RV CD42AR-RV	1.26 - 1.50 (32 - 38) .98 - 1.22 (25 - 31)	PG 42	2.13 (54.1)	1.46 (37)	.35 (9)	2.24 (57)
CD48AA-RV CD48AR-RV	1.46 - 1.73 (37 - 44) 1.14 - 1.38 (29 - 35)	PG 48	2.34 (59.4)	1.50 (38)	.39 (10)	2.52 (64)



NOTES:

- 1) GENERAL DIMENSIONS DRAWINGS.
- 2) DIMENSIONS [] ARE IN INCHES.
- 3) DIMENSIONS NOTED ARE FOR REFERENCE ONLY.

Third angle projection



14853 HINDSDALE AVE, SUITE D
CENTENNIAL, CO 80112-4240, USA
TEL: +1-303-699-1135
TOLL FREE: +1-800-456-9012
E MAIL: info@sealconusa.com,
WEBSITE: www.sealconusa.com

