

268
HANDHELD CASES

292
UNIVERSAL ENCLOSURES

318
HEAVY DUTY AND ELECTRICAL ENCLOSURES

342
DESKTOP AND INSTRUMENT CASES

348
DEVELOPMENT BOARD ENCLOSURES

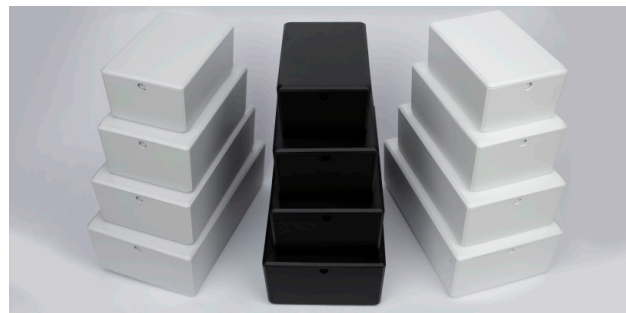
367
VERSATILE IOT AND SENSOR ENCLOSURES

370
CUSTOM SIZED ENCLOSURES

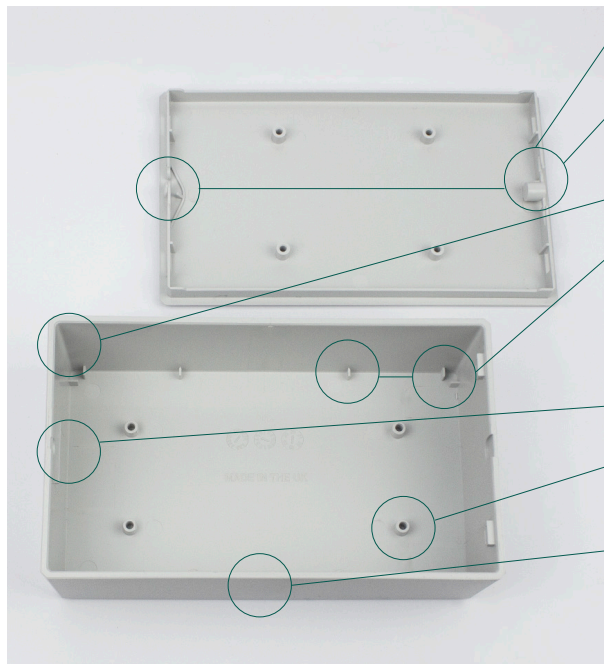
Easy Assembly Electronics enclosure

Product overview

This UK manufactured universal enclosure has been designed to provide flexibility and increased functionality. A unique, dual action lid and clip-in-points for your PCB, reduces assembly time whilst providing the end user with a premium quality, modern product. Moulded from ABS UL94-V0 material, in a variety of sizes and colours, with optional DIN Rail / wall mount brackets available. If you need an enclosure that can handle your electronic applications whilst looking good, then look no further!



Key features



Dual action lid

The dual action lid is held in place with a push-button clip or with a single screw.

Spring feature in lid

Holds the PCB securely in place without the need for screws, greatly improving the assembly time.

No corner pillars

Maximised PCB footprint, providing edge-to-edge capability.

PCB edge corner supports in the base

Sizes 3 & 4 have four additional half board supports which can be removed to make way for solder points on the bottom of the PCB.

Easy assembly ledge

In conjunction with the spring feature in the lid, the ledge holds the PCB in place without the need for screws, for quick and easy assembly.

Multiple PCB mounting points in base and lid

Central position mounting bosses support edge-to-edge capability.

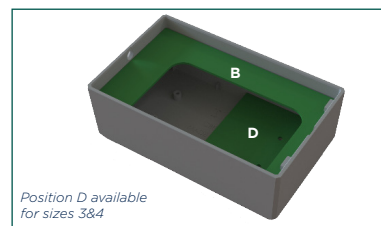
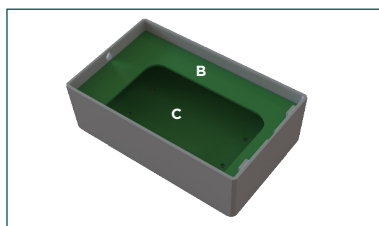
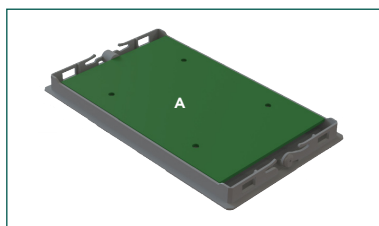
Smooth finish

All sides of the enclosure have been designed to have a smooth finish for ease of customisation and modification.

Raspberry Pi compatible

Sizes 3 & 4 fit Raspberry Pi 3 and 4 and Size 1 fits the Raspberry Pi Zero.

PCB positions



Position D available for sizes 3&4

DIMENSIONS FOR EACH ENCLOSURE SIZE

ENCLOSURE SIZE	PCB MOUNTING POSITION		MAX PCB DIMENSIONS	BOARD THICKNESS
SIZE 1	LID	A	Four Screw Mounts	68mm x 54mm
		B	Upper Captivated	84mm x 53mm
	BASE	C	Lower Screw Mounted	82mm x 52mm (end connector) / 80.5mm (side connectors)
				Any
SIZE 2	LID	A	Four Screw Mounts	89mm x 61.5mm
		B	Upper Captivated	104mm x 63mm
	BASE	C	Lower Screw Mounted	101.5mm x 61.5mm (end connector) / 100.5mm (side connector)
				Any
SIZE 3	LID	A	Four Screw Mounts	109mm x 71.5mm
		B	Upper Captivated	124mm x 73mm
	BASE	C	Lower Screw Mounted Full board	121.5mm x 71.5mm (end connector) / 121mm (side connector)
		D	Lower Screw Mounted Half Board	71.5mm x 45.3mm (central pillars) / 60.25mm (off centre pillars)
SIZE 4	LID	A	Four Screw Mounts	129mm x 81mm
		B	Upper Captivated	144mm x 83mm
	BASE	C	Lower Screw Mounted Full Board	141mm x 81mm (end connector & side connector)
		D	Lower Screw Mounted Half Board	81mm x 44.8mm (centre pillars) / 70mm (off centre pillars)
			Any	

PCB pillars are designed to accept No.4 (2.9mm) x6.5mm long self-tapping screws

Easy Assembly Electronics enclosure

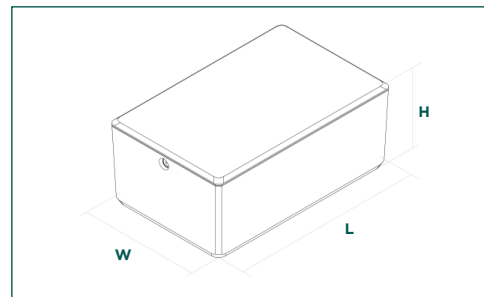


INDIVIDUAL SIZE SPECIFICATION

ENCLOSURE SIZE	GREY (GY)	BLACK (BK)	WHITE (WH)	EXTERNAL DIMENSIONS (LxWxH)	INTERNAL DIMENSIONS (LxWxH)	WALL THICKNESS
Size 1	CBEAC-01-GY	CBEAC-01-BK	CBEAC-01-WH	90mm x 60mm x 40mm	82mm x 52mm x 36mm	2.5mm
Size 2	CBEAC-02-GY	CBEAC-02-BK	CBEAC-02-WH	110mm x 70mm x 45mm	101.5mm x 61.5mm x 41mm	2.5mm
Size 3	CBEAC-03-GY	CBEAC-03-BK	CBEAC-03-WH	130mm x 80mm x 45mm	121.5mm x 71.5mm x 41mm	2.5mm
Size 4	CBEAC-04-GY	CBEAC-04-BK	CBEAC-04-WH	150mm x 90mm x 50mm	144mm x 83mm x 46mm	2.5mm

RANGE SPECIFICATION

STANDARD UNIT INCLUDES	Base, lid and one M3 screw (Pozi Pan BZP)			
MATERIALS	Base	UL94-VO ABS		
	Lid	UL94-VO ABS/ brass M3 insert		
	Screw	Bright Zinc Plated Steel		
COLOURS	Grey	RAL7047		
	Black	RAL9005		
	White	RAL9003		
COMPLIANCE	RoHS compliant			
IP RATING	IP40			
OPERATING TEMPERATURE	-10°C to 80°C			
TEST RESULTS	Standard	Test	Result	Test report
	EN62262	Impact test	IK06	TR106
	UL94	Flammability	VO	E115797
SCREW TORQUE	M3 screw (Pozi Pan)		0.5Nm	
PURCHASING INFORMATION	Country of origin		Great Britain (GB)	
	Commodity code		3923101000	
	Weight	Size 1	61g	
		Size 2	84g	
		Size 3	107g	
Size 4		128g		
Enclosure type		Universal		
OPTIONS	For alternative colours and materials MOQs will apply			



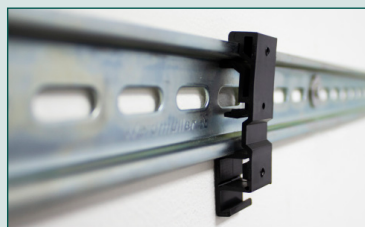
Potential industries / applications

Data logging, fire sensors, solar controllers, DIN Rail electronics, environmental monitoring, desktop instruments, production equipment, solar controllers, IoT equipment, speakers and audible indication and much more...

Customisation options

Digital printing, screen printing, machining / drilling and engraving.

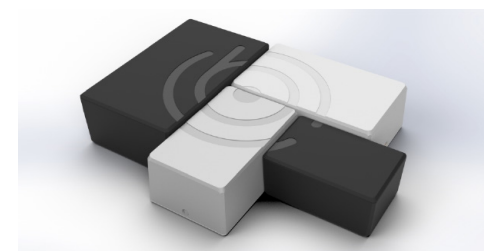
Accessories



DIN Rail Mount Bracket
(CDR-Bracket)



Universal Wall Mount Bracket
(CBWM-10xx)



268
HANDHELD CASES

292
UNIVERSAL ENCLOSURES

318
HEAVY DUTY AND ELECTRICAL ENCLOSURES

342
DESKTOP AND INSTRUMENT CASES

348
DEVELOPMENT BOARD ENCLOSURES

367
VERSATILE IOT AND SENSOR ENCLOSURES

370
CUSTOM SIZED ENCLOSURES

PLASTIC ENCLOSURES