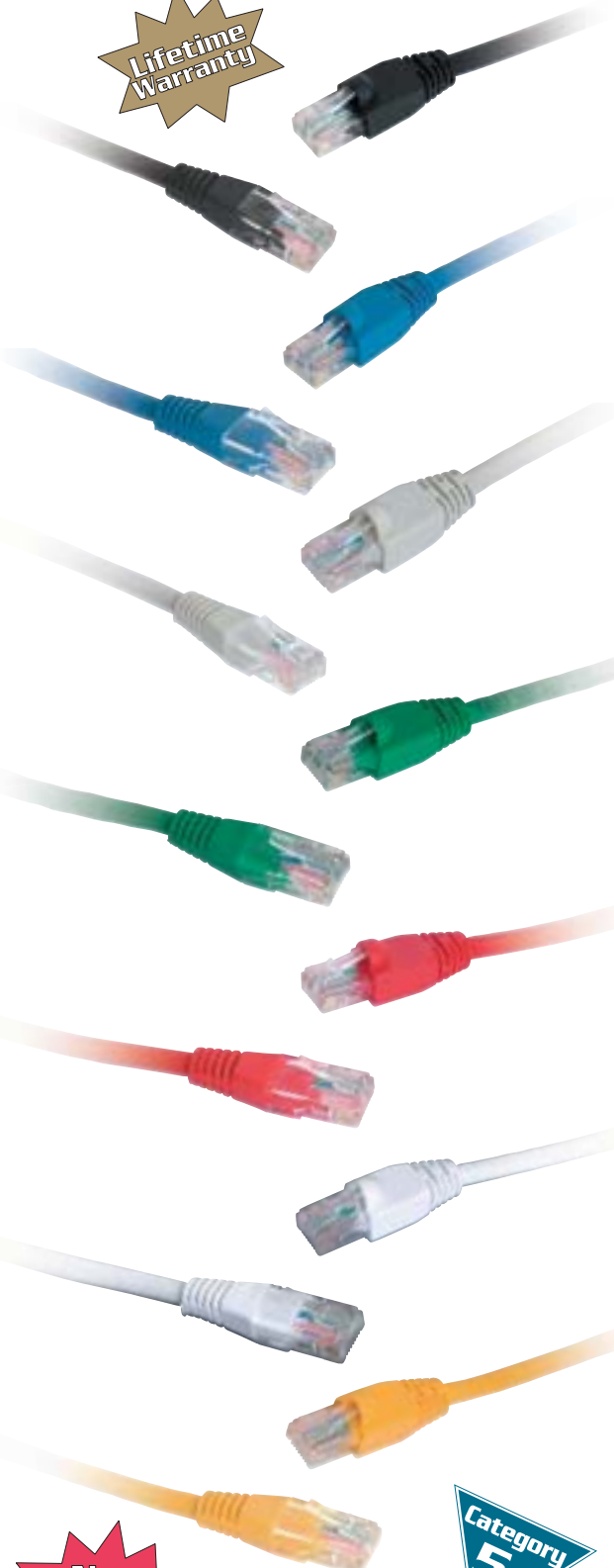




**Supplement
Product Catalog
Q502**

Lifetime
Warranty



New
Lengths

Category
5e

QUEST's Enhanced Category 5e/350Mhz UTP patch cords feature slim design molded strain-relief boots in both snagless and non-snagless types. They exceed specified performance as stated in TIA/EIA 568-A for connecting hardware and are manufactured using 350Mhz cable with 50u"gold plated modular connectors. Available in 568B and crossover wiring configurations. Offered in 7 colors for easy port or link identification. Lifetime warranted.

NON-SNAGLESS

COLOR	3 FT	7 FT	10 FT	15 FT	25 FT
BLACK	NPC-0103	NPC-0107	NOC-0110	NPO-0115	NPC-0125
BLUE	NPC-0203	NPC-0207	NPC-0210	NPC-0215	NPC-0225
GRAY	NPC-0903	NPC-0907	NPC-0910	NPC-0915	NPC-0925
GREEN	NPC-0603	NPC-0607	NPC-0610	NPC-0615	NPC-0625
RED	NPC-0303	NPC-0307	NPC-0310	NPC-0315	NPC-0325
WHITE	NPC-0803	NPC-0807	NPC-0810	NPC-0815	NPC-0825
YELLOW	NPC-0503	NPC-0507	NPC-0510	NPC-0515	NPC-0525

SNAGLESS

COLOR	1 FT	3 FT	5 FT	7 FT	10 FT
BLACK	NPC-1101	NPC-1103	NPC-1105	NPC-1107	NPC-1110
BLUE	NPC-1201	NPC-1203	NPC-1205	NPC-1207	NPC-1210
GRAY	NPC-1901	NPC-1903	NPC-1905	NPC-1907	NPC-1910
GREEN	NPC-1601	NPC-1603	NPC-1605	NPC-1607	NPC-1610
RED	NPC-1301	NPC-1303	NPC-1305	NPC-1307	NPC-1310
WHITE	NPC-1801	NPC-1803	NPC-1805	NPC-1807	NPC-1810
YELLOW	NPC-1501	NPC-1503	NPC-1505	NPC-1507	NPC-1510

COLOR	15 FT	25 FT	50 FT	100 FT
BLACK	NPC-1115	NPC-1125	NPC-1150	NPC-1100
BLUE	NPC-1215	NPC-1225	NPC-1250	NPC-1200
GRAY	NPC-1915	NPC-1925	NPC-1950	NPC-1900
GREEN	NPC-1615	NPC-1625	NPC-1650	NPC-1600
RED	NPC-1315	NPC-1325	NPC-1350	NPC-1300
WHITE	NPC-1815	NPC-1825	NPC-1850	NPC-1800
YELLOW	NPC-1515	NPC-1525	NPC-1550	NPC-1500

CROSSOVER

COLOR	3 FT	5 FT	7 FT	10 FT	15 FT	25 FT
RED	NPC-2303	NPC-2305	NPC-2307	NPC-2310	NPC-2315	NPC-2325
YELLOW	NPC-2503	NPC-2505	NPC-2507	NPC-2510	NPC-2515	NPC-2525

CUSTOM LENGTHS AVAILABLE

Quest now offers a broad range of bulk data and voice grade cables. New in our line is 4 pair Category 5e 350MHz solid and stranded and CAT6 solid in 1,000-foot pull boxes. These are high quality, UL listed and meet ANSI/TIA/EIA, ISO/IEC standards and offered in various colors. In addition, Quest also offers voice grade cable in flat silver satin and round in 1,000-foot reels.

BULK DATA CABLE

CATEGORY 5E BULK CABLE

4 PAIR 24AWG CAT5E 350MHz UTP CABLE
1,000 FT. PULL BOXES

SOLID

STRANDED

COLOR	ITEM #	COLOR	ITEM #
GRAY	NBW-1059	GRAY	NBW-1159
BLUE	NBW-1052	BLUE	NBW-1152
YELLOW	NBW-1055	YELLOW	NBW-1155
RED	NBW-1053	RED	NBW-1153
GREEN	NBW-1056	GREEN	NBW-1156
BLACK	NBW-1051	BLACK	NBW-1151
WHITE	NBW-1058	WHITE	NBW-1158

CATEGORY 6 BULK CABLE

4 PAIR 23AWG CAT6 SOLID UTP CABLE
1,000 FT. PULL BOXES

COLOR	ITEM #	COLOR	ITEM #
GRAY	NBW-1069	BLUE	NBW-1062

VOICE GRADE CABLE

ITEM #	DESCRIPTION
NBW-1426	2PR. (4C) 24AWG ROUND SOLID TEL. CABLE - 1,000'
NBW-1626	3PR. (6C) 24AWG ROUND SOLID TEL. CABLE - 1,000'
NBW-1826	4PR. (8C) 24AWG ROUND SOLID TEL. CABLE - 1,000'
NBW-2428	4C. 28AWG FLAT SILVER SATIN TEL. CABLE - 1,000'
NBW-2628	6C 28AWG FLAT SILVER SATIN TEL CABLE - 1,000'
NBW-2828	2PR. (4C) 24AWG ROUND SOLID TEL. CABLE - 1,000'

Please see Quest Full Line Catalog #Q700 for complete interconnect products



CAT5e 350MHz UTP Solid / Stranded UTP

- Meets Category 5e requirements as per ANSI/TIA/EIA, ISO/IEC standards
- 2nd Edition ISO/IEC 11801 CAT5e
- Excellent ACR values for Power Sum NEXT/ELFEXT attenuation and return loss
- UL Listed Type CM/CMR
- PVC Jacket
- 350MHz Rated Cable
- 4 pair 24AWG Solid or Stranded Copper
- 1,000 Foot Pull-boxes



CAT 6 FUTURELAN 250 Solid UTP

- In compliance with Proposed Category 6 requirements as per ANSI/TIA/EIA, ISO/IEC standards
- Positive ACR @ 250Mhz
- UL Listed Type CM / CMR
- PVC Jacket
- Star insert separator design
- 4 pair 23AWG Solid Copper
- 1,000 Foot Pull-boxes

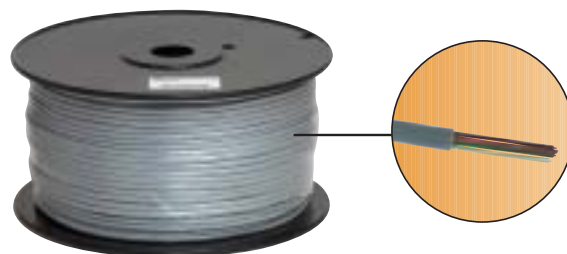
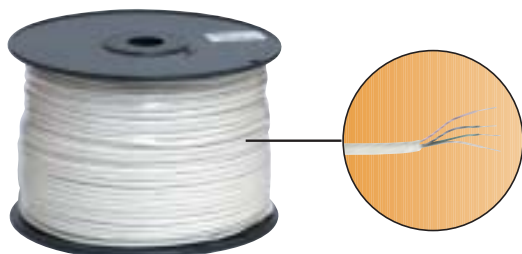




Fig. 1

TOOLESS C5E KEYSTONE JACKS

New Toolless RJ-45 CAT5e keystone jacks can be quickly terminated without punch-down tools. Simply prep the cable, remove the locking collar, lift the hinged contact cover, insert the pairs and manually press down the contact cover. Replace the locking collar and you're done! Terminate jacks in seconds with total confidence!

ITEM #	DESCRIPTION	FIG.
NKJ-5301	BLACK C5E RJ45 TOOLESS KEYSTONE JACK	1
NKJ-5302	BLUE C5E RJ45 TOOLESS KEYSTONE JACK	1
NKJ-5307	IVORY C5E RJ45 TOOLESS KEYSTONE JACK	1
NKJ-5308	WHITE C5E RJ45 TOOLESS KEYSTONE JACK	1



Fig. 2

CAT5E FEEDTHROUGH RJ-45 COUPLERS

CAT5e rated feed through RJ-45 couplers allow for coupling 2 RJ-45 data cables and with the ability to mount in modular faceplates, surface mount boxes or panels that accept keystone jacks. Available in black or white.

ITEM #	DESCRIPTION	FIG.
NKJ-5002	BLACK C5E PANEL FEEDTHROUGH COUPLER	2
NKJ-5003	WHITE C5E PANEL FEEDTHROUGH COUPLER	2



Fig. 3

CATEGORY 3 MODULAR JACKS

Quest offers 6 position, 6 contact and 8 position, 8 contact Category 3 modular jacks which fit most keystone faceplates, surface mount boxes or panels that accept keystone jacks. They can be wired without tools using the termination cap and insulation displacement contacts for ease of installation of all 4 pairs simultaneously. Wire range is 22-26 AWG solid or stranded. Also available in 110 style.

ITEM #	DESCRIPTION	FIG.
NKJ-4601	BLACK 6P / 6C CATEGORY 3 MODULARJACK	3
NKJ-4607	IVORY 6P / 6C CATEGORY 3 MODULARJACK	3
NKJ-4608	WHITE 6P / 6C CATEGORY 3 MODULAR JACK	3
NKJ-4801	BLACK 8P / 8C CATEGORY 3 MODULAR JACK	3
NKJ-4101	BLACK CAT 3/4 110 STYLE KEYSTONE JACK	4
NKJ-4102	BLUE CAT 3/4 110 STYLE KEYSTONE JACK	4
NKJ-4107	IVORY CAT 3/4 110 STYLE KEYSTONE JACK	4
NKJ-4108	WHITE CAT 3/4 110 STYLE KEYSTONE JACK	4

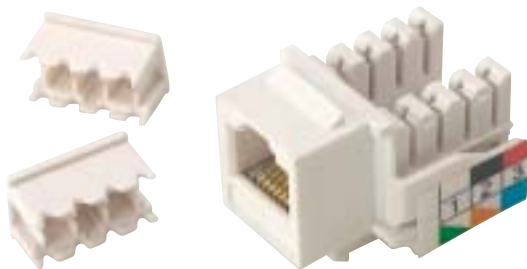


Fig. 4

Please see Quest Full Line Catalog #Q700 for complete interconnect products

MODULAR CONNECTORS

Quest now offers RJ-45 3-contact solid and shielded modular plugs for solid or stranded and 10 conductor modular plugs for solid or stranded. Also new is the 2 piece CAT 5e RJ45 modular plug for round or stranded

ITEM #	DESCRIPTION	FIG.
NMP-8325	8P8C ROUND SOLID - 50u"™ GOLD 3 CONTACT™	5
NMP-8425	8P8C ROUND SOLID - 50u"™ SHIELDED™	6
NMP-8510	10 CONDUCTOR FLAT MODULAR PLUG	7
NMP-8625	2PC ROUND/SOLID C5E RJ-45 MOD PLUG 50 GOLD	8



FIG. 5



FIG. 6

DATA IN-LINE COUPLERS

In addition to the cross-wired telephone couplers, Quest now offers straight-through connected couplers for data applications. Available in 4, 6 and 8 conductor in ivory or white.

ITEM #	DESCRIPTION	FIG.
NTC-0421	IVORY 4C IN-LINE COUPLER DATA WIRED	9
NTC-0422	WHITE 4C IN-LINE COUPLER DATA WIRED	10
NTC-0621	IVORY 6C IN-LINE COUPLER DATA WIRED	9
NTC-0622	WHITE 6C IN-LINE COUPLER DATA WIRED	10
NTC-0821	IVORY 8C IN-LINE COUPLER DATA WIRED	9
NTC-0822	WHITE 8C IN-LINE COUPLER DATA WIRED	10



FIG. 7

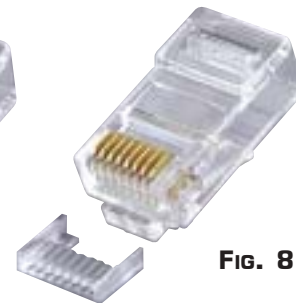


FIG. 8

B-WIRE CONNECTORS

Quest's B-connectors also known as "beanies" are designed to accept up to four strands of solid or stranded 22 AWG unstripped wires. Simply insert wire and crimp.

ITEM #	DESCRIPTION	FIG.
TBN-1001	B-WIRE CONNECTORS-WHITE	11



FIG. 9



FIG. 10



FIG. 11

BLANK FACE PLATES

Blank faceplates are utilized for covering unused single-gang receptacles or surface mount electrical boxes or outlets. Available in ivory or white.

ITEM #	DESCRIPTION	FIG.
NFP-1007	BLANK SINGLE-GANG FACEPLATE-IVORY	12
NFP-1008	BLANK SINGLE-GANG FACEPLATE-WHITE	13



FIG. 12



FIG. 13

Please see Quest Full Line Catalog #Q700 for complete interconnect products

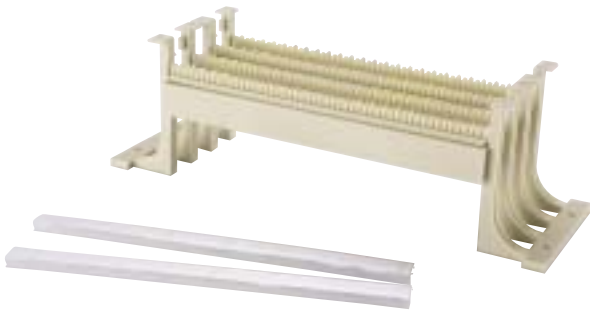


Fig. 1



Fig. 5



Fig. 6

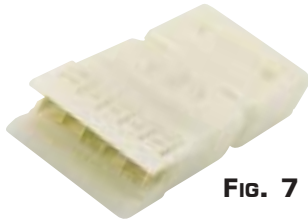


Fig. 7

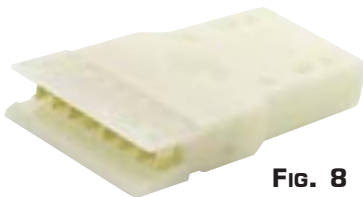


Fig. 8



Fig. 9

110 WIRING BLOCKS

Quest's 110 cross-connect wiring blocks are used to support voice and high-speed data applications. Wiring sizes of 22-26AWG can be easily punched into the 5-pair increment strips. These blocks come complete with mounting feet and index strips for 25 pairs.

ITEM #	DESCRIPTION	FIG.
NCB-1050	50 PAIR 110 WIRING BLOCK WITH FEET	1
NCB-1100	100 PAIR 110 WIRING BLOCK WITH FEET	1

110 CONNECTING BLOCKS

The connecting blocks used with the wiring blocks are designed with insulation displacement (IDC) contacts that terminate 22-26AWG stranded or solid wire. They are available in 3, 4 and 5 pair sizes.

ITEM #	DESCRIPTION	FIG.
NCB-1003	3PAIR 110 CONNECTING BLOCK	N/S
NCB-1004	4PAIR 110 CONNECTING BLOCK	N/S
NCB-1005	5PAIR 110 CONNECTING BLOCK	N/S

CATEGORY 5 110 STYLE PATCH PLUGS

Category 5 110 style patch cord plugs are available in 1, 2, 3 and 4 pair configurations and are easily terminated. They are designed for 24-26 AWG stranded size cable.

ITEM #	DESCRIPTION	FIG.
NIP-1101	1 PAIR 110 STYLE PATCH CORD PLUG	5
NIP-1102	2 PAIR 110 STYLE PATCH CORD PLUG	6
NIP-1103	3 PAIR 110 STYLE PATCH CORD PLUG	7
NIP-1104	4 PAIR 110 STYLE PATCH CORD PLUG	8

110 TERMINATION CAPS

The 110 termination caps are designed to hold and secure wires to connecting blocks. The caps are designed for 4 conductor terminations.

ITEM #	DESCRIPTION	FIG.
NCB-2000	4 CONDUCTOR 110 TERMINATION CAPS	9

Please see Quest Full Line Catalog #Q700 for complete interconnect products

QUEST offers solid and vented 19" equipment shelves and trays for mounting telecommunication devices in 19" racks or cabinets. The vented designs offer added thru-airflow for assisting equipment to dissipate operational heat. They are offered in single or double sided, vented or non-vented, slide out vented designs that conform to EIA specifications for 19" racks and cabinets. They are manufactured with 16-gauge steel and are painted in black powder electrostatic finish with rolled edges to prevent equipment slippage. Mounting hardware is included.

QUEST also offers a 19" keyboard tray with mouse wing attachment that is reversible for right or left-handed use. They tray mounts in a 1 RMS space and is rolled to prevent keyboard slippage. Manufactured to support up to 52 pounds. Mounting hardware is included.

ITEM #	DESCRIPTION	FIG.
NWM-1010	19" SINGLE-SIDED NON-VENTED SHELF 1 RMS-22 LB. CAPACITY	1
NWM-1011	19" SINGLE-SIDED NON-VENTED SHELF 2 RMS-56 LB. CAPACITY	1
NWM-1013	19" SINGLE-SIDED 10.5" DEEP SOLID NON-VENTED SHELF-2 RMS-52 LB. CAPACITY	1
NWM-1020	19" SINGLE-SIDED VENTED SHELF 1 RMS-22 LB. CAPACITY	2
NWM-1021	19" SINGLE-SIDED VENTED SHELF 2 RMS-56 LB. CAPACITY	2
NWM-1032	19" SINGLE-SIDED SLIDE-OUT VENTED SHELF 2 RMS-48 LB. CAPACITY	3
NWM-1012	19" DOUBLE-SIDED NON-VENTED SHELF** 3 RMS-70 LB. CAPACITY	4
NWM-1022	19" DOUBLE-SIDED VENTED SHELF 3 RMS-70 LB. CAPACITY	5
NWM-1000	19" KEYBOARD SHELF WITH REVERSIBLE MOUSE TRAY-1 RMS-52 LB. CAPACITY	6

Please see Quest Full Line Catalog #Q700 for complete interconnect products

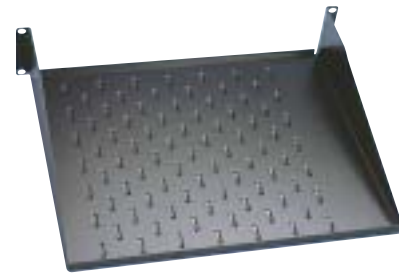


FIG. 1

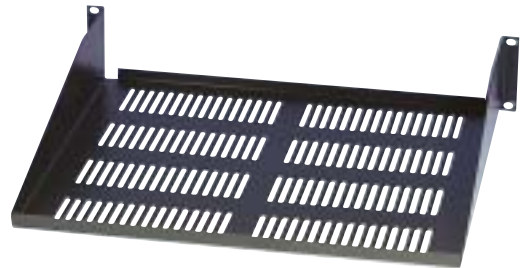


FIG. 2



FIG. 3



FIG. 4



FIG. 6

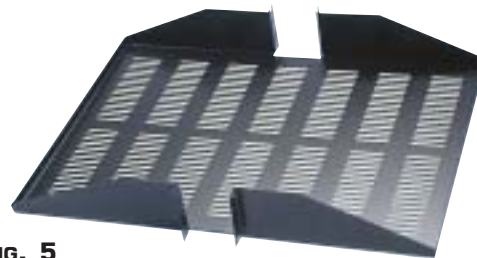
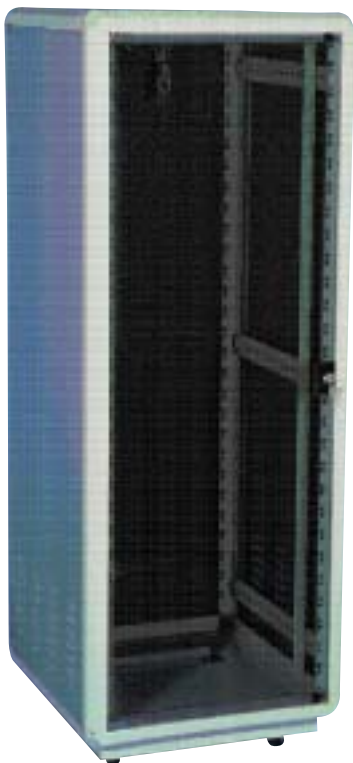


FIG. 5

FLOOR CABINET ENCLOSURES



Quest offers high-quality floor standing equipment cabinets that meet most equipment installation requirements. These enclosures are designed for mounting LAN Equipment, Computer Hardware, Telecommunications Equipment and other electronic equipment, which requires housing and central connectivity consolidation. They feature a strong aluminum frame design with removable cold-rolled steel side and top panels. The cabinets are available in several heights, colors and with standard depth or 32" deep dimensions which can accommodate servers or other types of equipment which require the extra depth. These cabinets are shipped fully assembled and can accommodate various accessories.

FEATURES & BENEFITS:

- ALUMINUM STRUCTURE CONSTRUCTION
- COLD-ROLLED STEEL SIDE AND REAR PANELS
- MEETS EAI-310D SPECIFICATIONS
- ACRYLIC KEYED FRONT DOOR - AVAILABLE ALSO IN TEMPERED GLASS
- REMOVABLE CASTERS
- ADJUSTABLE GLIDING FEET
- ADJUSTABLE INNER RAILS
- FAN ASSEMBLY ACCESS PROVIDED ON TOP
- COMES FULLY ASSEMBLED
- FINISHED IN ELECTROSTATIC PAINT
- AVAILABLE IN BLACK OR ALMOND
- SPECIAL DESIGNS AVAILABLE

ITEM

DESCRIPTION

NWM-4000	4' FLOOR CABINET ENCLOSURE-28 RMS CAPACITY FOR 19" RACK MOUNT EQUIPMENT-22.5" WIDTH 24" DEEP-ACRYLIC DOOR-ALMOND
NWM-4001	4' FLOOR CABINET ENCLOSURE-28 RMS CAPACITY FOR 19" RACK MOUNT EQUIPMENT-22.5" WIDTH 24" DEEP-ACRYLIC DOOR-BLACK
NWM-6191	6' FLOOR CABINET ENCLOSURE-40 RMS CAPACITY FOR 19" RACK MOUNT EQUIPMENT-22.5" WIDTH 32" DEEP-ACRYLIC DOOR-BLACK
NWM-6271	6' FLOOR CABINET ENCLOSURE-40 RMS CAPACITY FOR 19" RACK MOUNT EQUIPMENT-27.5" WIDTH 32" DEEP-ACRYLIC DOOR-BLACK
NWM-7190	7' FLOOR CABINET ENCLOSURE-45 RMS CAPACITY FOR 19" RACK MOUNT EQUIPMENT-22.5" WIDTH 24" DEEP-ACRYLIC DOOR-ALMOND
NWM-7191	7' FLOOR CABINET ENCLOSURE-45 RMS CAPACITY FOR 19" RACK MOUNT EQUIPMENT-22.5" WIDTH 24" DEEP-ACRYLIC DOOR-BLACK
NWM-7321	7' FLOOR CABINET ENCLOSURE-45 RMS CAPACITY FOR 19" RACK MOUNT EQUIPMENT-32" WIDTH 32" DEEP-ACRYLIC DOOR-ALMOND

**CUSTOM ENCLOSURES AVAILABLE
CONTACT YOUR LOCAL QUEST DISTRIBUTOR**

WALL-MOUNT ENCLOSURES

Wall mount enclosures provide a compact means in which to install 19" rack-mount equipment. These enclosures are manufactured in aluminum framing with steel side and top/bottom panels and are available in black or almond electrostatic paint finishes. Cable access is from top or bottom with top panel perforated to accommodate ventilation fans. Rugged and economical wall mount enclosure solutions are provided with this series of products.

Quest also provides swing-out designs for the wall-mount series, which allows installers the capability of accessing equipment and wiring from the front or rear and at the same time conserving wall space. Keyed access is provided to front door and rear compartment.

FEATURES & BENEFITS:

- ALUMINUM STRUCTURE CONSTRUCTION
- COLD-ROLLED STEEL SIDE AND REAR PANELS
- MEETS EAI-310D SPECIFICATIONS
- ACRYLIC KEYED FRONT DOOR - AVAILABLE ALSO IN TEMPERED GLASS
- ADJUSTABLE INNER RAILS
- FAN ASSEMBLY ACCESS PROVIDED ON TOP
- COMES FULLY ASSEMBLED
- FINISHED IN ELECTROSTATIC PAINT
- AVAILABLE IN BLACK OR ALMOND
- SPECIAL DESIGNS AVAILABLE

ITEM #	DESCRIPTION	FIG.
NWM-5000	26" WALL MOUNT EQUIPMENT ENCLOSURE FOR "MOUNTING 19" EQUIPMENT 12 RMS CAPACITY "22.5" WIDE, 26" HEIGHT, 24" DEEP" "ALUMINUM FRAME, STEEL VENTED PANELS PAINTED IN ELECTROSTATIC PAINT - ALMOND	1
NWM-5001	26" WALL MOUNT EQUIPMENT ENCLOSURE FOR "MOUNTING 19" EQUIPMENT 12 RMS CAPACITY "22.5" WIDE, 26" HEIGHT, 24" DEEP" "ALUMINUM FRAME, STEEL VENTED PANELS PAINTED IN ELECTROSTATIC PAINT - BLACK	1
NWM-5301	26" WALL MOUNT SWING-OUT EQUIPMENT ENCLOSURE FOR MOUNTING 19" EQUIPMENT - 12 RMS CAPACITY 22.5" WIDE, 26" HEIGHT, 24" DEPTH ALUMINUM FRAME, STEEL VENTED PANELS PAINTED IN ELECTROSTATIC PAINT - BLACK	2

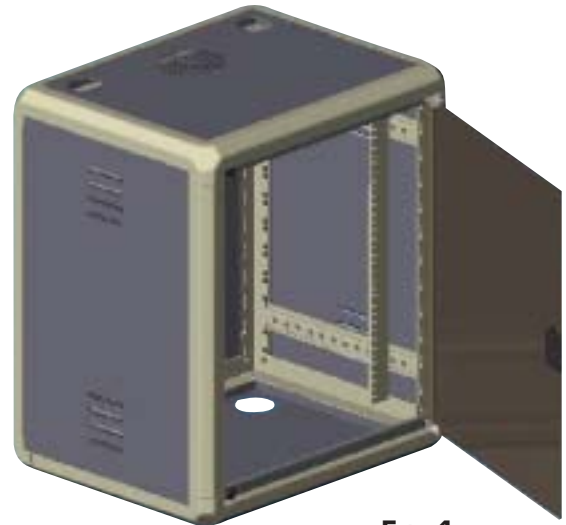


FIG. 1



FIG. 2

Please see Quest Full Line Catalog #Q700 for complete interconnect products

**CUSTOM ENCLOSURES AVAILABLE
CONTACT YOUR LOCAL QUEST DISTRIBUTOR**



QUEST provides only the best quality wire management products designed for mounting equipment and hardware. The 19" relay racks are offered in 4 and 7 foot heights and in natural aluminum and powder-coat electrostatic black finish. All racks are provided with all assembly hardware including equipment screws. They are designed with mounting holes for anchoring rack to the floor.

FEATURES & BENEFITS:

- FABRICATED WITH TOP GRADE ALUMINUM
- 12-24 THREADED RAILS ON BOTH SIDES
- DOUBLE ROLLED TOP CROSS BRACES FOR ADDED STABILITY
- ASSEMBLY HARDWARE INCLUDED
- EQUIPMENT SCREWS INCLUDED
- EASY TO ASSEMBLE

ITEM #	DESCRIPTION	FIG.
NWM-0401	19" x 48" RACK-ALUMINUM FINISH 24 RMS. CAPACITY	4
NWM-0402	19" X 48" RACK-BLACK POWDERCOAT FINISH 24 RMS. CAPACITY	3
NWM-0701	19" X 84" RACK-ALUMINUM FINISH 45 RMS CAPACITY	1
NWM-0702	19" X 84" RACK-BLACK POWDERCOAT FINISH 45 RMS. CAPACITY	2

Fig. 1

Please see Quest Full Line Catalog #Q700 for complete interconnect products

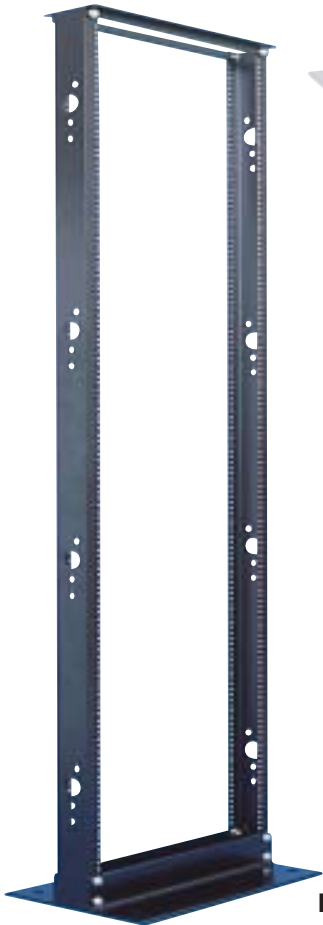


FIG. 2



FIG. 3



FIG. 4

Quest offers cable management products, which include high quality cable managers and wall mounting brackets in hinged and non-hinged designs. These are high quality products, which are compliant with EIA/TIA recommendations. Also offered is a 19" rack mount 10-outlet power strip with indicator light and circuit breaker.

WIRE MANAGERS

ITEM #	DESCRIPTION	FIG.
NWM-2001	19" HORIZONTAL WIRE MANAGER 5 RINGS-1 RMS	1
NWM-2002	19" HORIZONTAL WIRE MANAGER 10 RINGS-2 RMS	2
NWM-2003	19" HORIZONTAL FINGER DUCT WITH COVER 1 RMS	3
NWM-2004	4 FT. VERTICAL WIRE MANAGER	4
NWM-2007	7 FT. VERTICAL WIRE MANAGER	4

WALL MOUNT BRACKETS

ITEM #	DESCRIPTION	FIG.
NWM-3001	19" - 1 RMS 6" DEEP HINGED WALL BRACKET	5
NWM-3002	19" - 2 RMS 6" DEEP HINGED WALL BRACKET	5
NWM-3004	19" - 4 RMS 6" DEEP HINGED WALL BRACKET	5
NWM-3006	19" - 6 RMS 6" DEEP HINGED WALL BRACKET	5
NWM-3014	19" - 4 RMS 12" DEEP HINGED WALL BRACKET	5
NWM-3016	19" - 6 RMS 12" DEEP HINGED WALL BRACKET	5
NWM-3114	19" - 4 RMS 12" DEEP NON-HINGED WALL BRACKET	5
NWM-3116	19" - 6 RMS 12" DEEP NON-HINGED WALL BRACKET	5

POWER STRIP

ITEM #	DESCRIPTION	FIG.
NWM-6000	19" - RACK MOUNT POWER STRIP 10-OUTLET	6

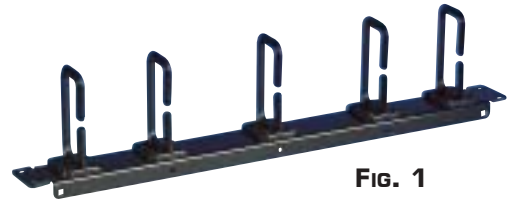


FIG. 1

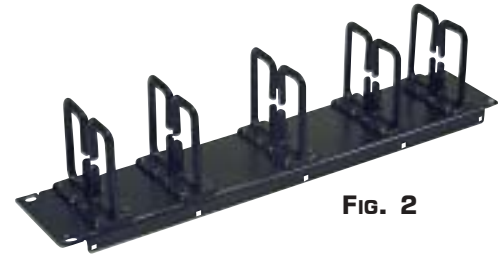


FIG. 2

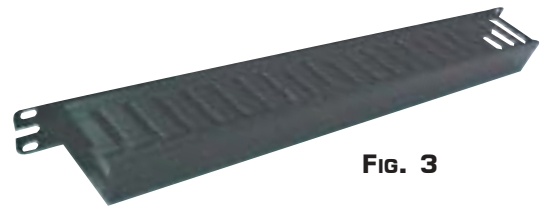


FIG. 3



FIG. 5



FIG. 4



FIG. 6

Please see Quest Full Line Catalog #Q700 for complete interconnect products



FIG. 1



FIG. 2



FIG. 3



FIG. 4



FIG. 5



FIG. 6



FIG. 7



FIG. 8



FIG. 9

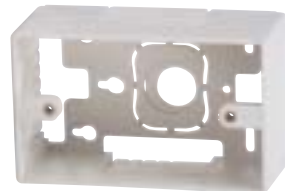


FIG. 10

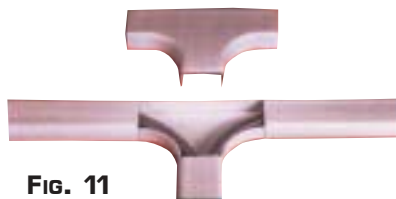


FIG. 11

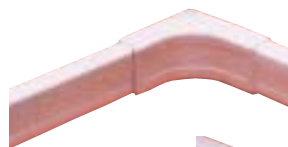


FIG. 12



FIG. 14



FIG. 13

QUEST's raceway system offers installer-friendly one-piece latching duct raceway and accessories to facilitate the routing of cables in open architecture wiring. The raceway is manufactured with flame-retardant material and is easily cut and painted to match any décor.

Raceway can be used for many low-voltage applications including Data UTP, STP, Coaxial, Fiber Optic, Signal, Audio, Video and others. The raceway is manufactured with high-strength adhesive tape backing for ease of installation and come in 6 foot lengths in 0.5" and 1" widths. A comprehensive line of accessories is also available, including an outside corner designed for fiber optic and CAT5 bend radius requirements. All raceway and accessories come in white

ITEM #	DESCRIPTION	FIG.
NRS-1805	0.5" 1PC. LATCHING RACEWAY, 6" LENGTH, 20/BOX WHITE	1
NRS-1801	1 PC. LATCHING RACEWAY, 6" LENGTH, 20/BOXWHITE	2
NRS-3005	0.5 SPLICE 10/BAG WHITE	7
NRS-3001	1" SPLICE, 10/BAG WHITE	7
NRS-3015	0.5" CAP, 10/BAG WHITE	8
NRS-3011	1" CAP, 10/BAG WHITE	8
NRS-3025	0.5" TEE, 10/BAG WHITE	3
NRS-3021	1" TEE, 10/BAG WHITE	3
NRS-3035	0.5" ELBOW, 10/BAG WHITE	4
NRS-3031	1" ELBOW, 10/BAG WHITE	4
NRS-3045	0.5" INSIDE CORNER, 10/BAG WHITE	6
NRS-3041	1" INSIDE CORNER, 10/BAG WHITE	6
NRS-3055	0.5" OUTSIDE CORNER 10/BAG WHITE	5
NRS-3051	1" OUTSIDE CORNER, 10/BAG WHITE	5
NRS-3091	1" MAX RADIUS OUTSIDE CORNER 10/BAG, WHITE	13
NRS-3062	UNIVERSAL JUNCTION BOX 1/BAG W/CUTOUTS	10
NRS-3121	1" MAX RADIUS INSIDE CORNER	12
NRS-3131	1" MAX RADIUS T ADAPTER	11
NRS-3141	1" DROP CEILING ADAPTER	9
NRS-3151	1" MAX RADIUS ELBOW	14

Please see Quest Full Line Catalog #Q700 for complete interconnect products

D-SUBMINIATURE CONNECTORS AND HOODS

New are DB-37 and DB-50 D-Subminiature crimp style connectors. These complement our complete line of crimp style D-Sub connectors found in our Master Catalog. Also, heavy-duty metal hoods for 37 and 50 pin D-Sub connectors are being offered which mate with these connectors.

ITEM #	DESCRIPTION	FIG.
DSC-2137	37 PIN CRIMP D-SUB MALE	1
DSC-2237	37 PIN CRIMP D-SUB FEMALE	2
DSC-2150	50 PIN CRIMP D-SUB MALE	1
DSC-2250	50 PIN CRIMP D-SUB FEMALE	2
DSH-5437	37 PIN D-SUB METAL HOOD	3
DSH-5450	50 PIN D-SUB METAL HOOD	3
DSH-5509	9 PIN METAL HOOD W/ GROMMETS	N/S
DSH-5525	25 PIN METAL HOOD W/ GROMMETS	N/S

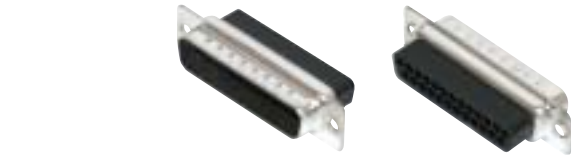


FIG. 1



FIG. 2



FIG. 3

GROMMET SETS

Grommet sets are now being offered in various sizes for metal D-sub hoods and are offered in sets of 5 different diameters that accommodate various cable sizes. These are offered for 9, 15, 25, 37 and 50 hood sizes.

ITEM #	DESCRIPTION	FIG.
DSG-1915	9 & 15 PIN HOOD GROMMET SET 5,6,7,8,9,MM I.D.	4
DSG-1025	25 PIN HOOD GROMMET SET 6,7,8,9,10 MM I.D.	4
DSG-3750	37 & 50 PIN HOOD GROMMET SET 9,10,11.5,13,14.5MM.4	



FIG. 4

HIGH-DENSITY GENDER ADAPTERS

Quest offers various solutions for converting d-subminiature gender configurations and is adding new high-density models to the line. These include 15 pin Male-to-Male and 15 pin Female-to-Female types. The configuration is 3 rows of 5 contacts each in a thin mini space saving shell.

ITEM #	DESCRIPTION	FIG.
NGC-1077	D15 M-M HIGH DENSITY MINI GENDER CHANGER	5
NGC-1088	D15 F-F HIGH DENSITY MINI GENDER CHANGER	6
NGC-5101	9F-25M NULL MODEM ADAPTER	N/S
NGC-5102	25F-25M NULL MODEM ADAPTER	N/S
NGC-5103	9F-9M NULL MODEM ADAPTER	N/S



FIG. 5



FIG. 6

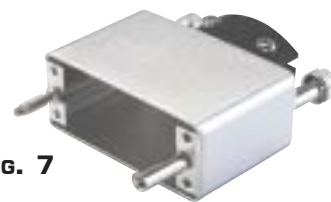


FIG. 7

V.35 CONNECTORS

Quest now offers a family of V.35 connectors, hoods and contacts. The hoods come with thumbscrews and cable strain relief. Connectors require contacts which are sold separately.

ITEM #	DESCRIPTION	FIG.
DSV-1000	V.35 HOOD W/THUMBSCREWS & STRAIN RELIEF	7
DSV-1001	V.35 MALE CONNECTOR	8
DSV-1002	V.35 FEMALE CONNECTOR	9
DSV-1003	V.35 MALE CONTACTS — LOOSE — 100/BAG	10
DSV-1004	V.35 FEMALE CONTACTS — LOOSE — 100/BAG	11



FIG. 8

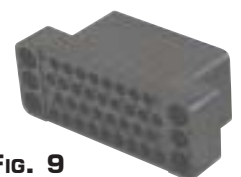


FIG. 9



FIG. 10



FIG. 11

FIG. 1



FIG. 2



FIG. 3

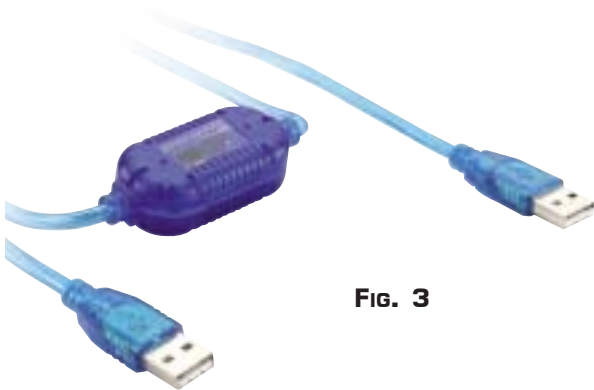


FIG. 4

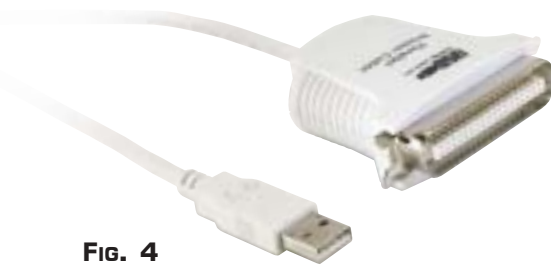


FIG. 5



FIG. 6



USB CABLES

Quest now offers Universal Serial Bus (USB) cables in A to A and A to B configurations. Use them for extending your USB devices or connect to a system hub or peripheral USB device. Available in various lengths. Meets USB Spec Version 1.1

ITEM #	DESCRIPTION	FIG.
NUB-2003	3' A TO A MALE TO MALE USB CABLE	1
NUB-2006	6' A TO A MALE TO MALE USB CABLE	1
NUB-2010	10' A TO A MALE TO MALE USB CABLE	1
NUB-2103	3' A TO B MALE TO MALE USB CABLE	2
NUB-2106	6' A TO B MALE TO MALE USB CABLE	2
NUB-2110	10' A TO B MALE TO MALE USB CABLE	2

USB LAP-LINK CABLE

Quest's PC USB Lap link cable allows a fast solution for connecting between 2 PC's through USB ports. Not only does this cable allow for transmitting data at a much greater speed than traditional parallel connections, it also completely supports the plug-and-play functions of Windows 95/98 operating systems. Suitable for Notebooks, these cables are compliant with USB specification version 1.1. No external power required.

ITEM #	DESCRIPTION	FIG.
NUB-3000	6' USB LAP-LINK CABLE	3

USB PARALLEL SERIAL PRINTER CABLES

These connecting cables allow compatible printers to plug directly into a standard PC USB port. It can also be used to connect multiple printers or scanners to USB hub. Available in a 6 foot USB to Centronics 36 pin male connector for parallel printer requirements.

ITEM #	DESCRIPTION	FIG.
NUB-4000	6' USB A MALE TO 36 PIN CENTRONICS MALE	4

USB ADAPTERS

Quest's USB adapters allow changing of configurations from A type female to B type male and A type male to B type female. These are solidly constructed 1 piece adapters.

ITEM #	DESCRIPTION	FIG.
NUB-5000	A FEMALE TO B MALE USB ADAPTER	5
NUB-5001	A MALE TO B FEMALE USB ADAPTER	6

Please see Quest Full Line Catalog #Q700 for complete interconnect products

Newly offered are Din type cable assemblies, which are configured and used, for a variety of computer connecting applications. Among them are Keyboard or Mouse extension cables for AT and PS2 types and also for MIDI (Music Instrument Digital Device) applications. These are quality cables, which are molded and constructed with shielded cable. Also available are Mini-Din in-line adapters.

AT TYPE KEYBOARD CABLES

ITEM #	DESCRIPTION	FIG.
NCC-8016	6' D5 MALE TO D5 MALE AT TYPE KEYBOARD CABLE	1
NCC-3006	6' D5 MALE TO D5 FEMALE AT TYPE KEYBOARD CABLE	2

AT-PS2 ADAPTERS

ITEM #	DESCRIPTION	FIG.
NCC-3100	6" MINI DIN 6 FEM. TO D5 MALE PS2 TO AT ADAPTER	3
NCC-3200	6" MINI DIN 6 MALE TO D5 FEM. AT TO PS2 ADAPTER	4

PS2 CABLES

ITEM #	DESCRIPTION	FIG.
NCC-3106	6' MINI DIN 6 FEM. TO MINI DIN 6 MALE PS2 CABLE	5
NCC-3110	10' MINI DIN 6 FEM. TO MINI DIN 6 MALE PS2 CABLE	5
NCC-3206	6' MINI DIN 6 MALE TO MINI DIN 6 MALE PS2 CABLE	6
NCC-3210	10' MINI DIN 6 MALE TO MINI DIN 6 MALE PS2 CABLE	6

MINI DIN IN-LINE COUPLERS

ITEM #	DESCRIPTION	FIG.
NCC-3906	MINI DIN 6 FEMALE-FEMALE INLINE COUPLE	7

Please see Quest Full Line Catalog #Q700 for complete interconnect products



FIG. 1

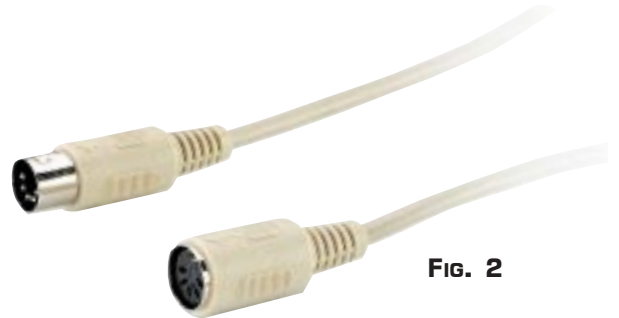


FIG. 2



FIG. 3



FIG. 4



FIG. 5



FIG. 6



FIG. 7

FIG. 1



FIG. 2



FIG. 3



FIG. 4



FIG. 5



In addition to our line of computer cables found in our master catalog, Quest is adding specialty application cables. These include null-modem, HP plotter and VGA cables. Also included are new lengths for the IEEE printer cable series.

FEATURES : (Except VGA cables)

- ALUMINUM MYLAR SHIELD
- TINNED COPPER DRAIN WIRE
- TINNED STRANDED COPPER CONDUCTORS
- MOLDED WITH THUMBSCREWS
- PVC JACKET
- LIFETIME WARRANTY

IEEE PRINTER CABLES

ITEM #	DESCRIPTION	FIG.
NCC-4006	6' IEEE D25 MALE TO 36P CENTRONICS PRINTER CABLE	1
NCC-4010	10' IEEE D25 MALE TO 36P CENTRONICS PRINTER CABLE	1
NCC-4025	25' IEEE D25 MALE TO 36P CENTRONICS PRINTER CABLE	1

HP PLOTTER CABLES

ITEM #	DESCRIPTION	FIG.
NCC-5306	6' D9 FEMALE TO D25 MALE HP PLOTTER CABLE	2
NCC-5310	10' D9 FEMALE TO D25 MALE HP PLOTTER CABLE	2

NULL MODEM CABLES

ITEM #	DESCRIPTION	FIG.
NCC-6106	6' NULL MODEM D25 MALE TO D25 FEMALE	4
NCC-6110	10' NULL MODEM D25 MALE TO D25 FEMALE	4
NCC-6206	6' NULL MODEM D25 MALE TO D25 MALE	3
NCC-6210	10' NULL MODEM D25 MALE TO D25 MALE	3

VGA CABLES

ITEM #	DESCRIPTION	FIG.
NCC-9106	6' HD15 MALE TO 5 BNC VGA CABLE	5
NCC-9115	15' HD15 MALE TO 5 BNC VGA CABLE	5

Please see Quest Full Line Catalog #Q700 for complete interconnect products



Quest now offers an array of external SCSI (Small Computer System Interface) cables that allows the attachment of various external devices to a single controller card in a computer. SCSI is often used in high-end PC's and server computers because of its greater flexibility and faster performance when compared to other Input/Output (I/O) technologies. SCSI I specifies DB25, DB50 or Centronics 36 connectors. SCSI II specifies Half Pitch DB50 and SCSI III specifies Half Pitch DB68 connectors.

FEATURES :

- ALUMINUM MYLAR SHIELD
- TINNED COPPER DRAIN WIRE
- TINNED STRANDED COPPER CONDUCTORS
- MOLDED WITH THUMBSCREWS
- PVC JACKET
- LIFETIME WARRANTY

VGA CABLES

ITEM #	DESCRIPTION	FIG.
NCC-8006	6' CENT. 50 MALE TO CENT. 50 MALE	1
NCC-8010	10' CENT. 50 MALE TO CENT. 50 MALE	1
NCC-8506	6' SCSI II H.P. DB50 MALE TO SCSI II H.P. DB50 MALE	2
NCC-8510	10' SCSI II H.P. DB50 MALE TO SCAI II H.P. DB50 MALE	2
NCC-8206	6' SCSI II H.P. DB50 MALE TO SCSI I CENT. 50 MALE	3
NCC-8210	10' SCSI H.P. DB50 MALE TO SCSI I CENT. 50 MALE	3
NCC-8303	3' SCSI II H.P. DB50 MALE TO SCSI I DB25 MALE	4
NCC-8306	6' SCSI II H.P. DB50 MALE TO SCSI I DB25 MALE	4
NCC-8310	10' SCSI II H.P. DB50 MALE TO SCSI I DB25 MALE	4
NCC-8406	6' SCSI III H.P. 68 MALE TO SCSI III H.P. 68 MALE	5
NCC-8410	10' SCSI III H.P. 68 MALE TO SCSI III H.P. 68 MALE	5

Please see Quest Full Line Catalog #Q700 for complete interconnect products



SCSI CABLES



Fig. 1

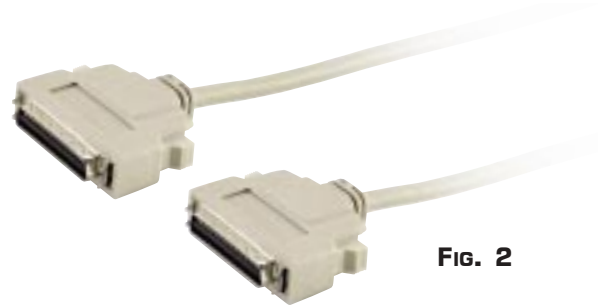


Fig. 2

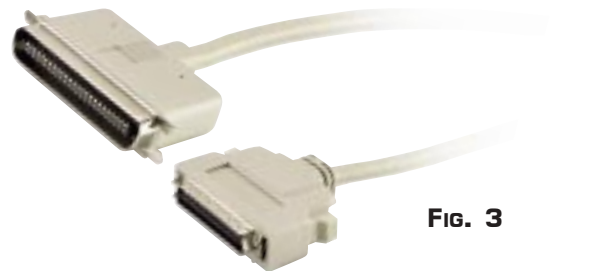


Fig. 3

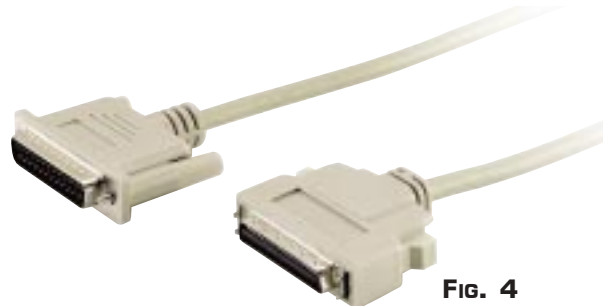


Fig. 4

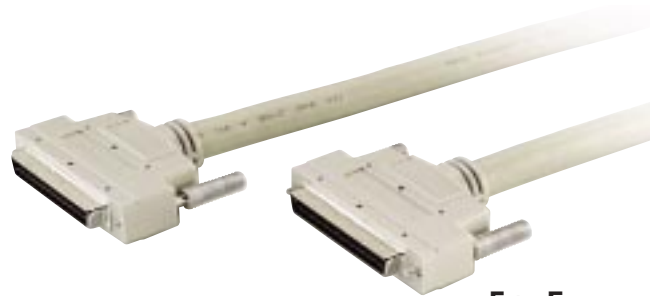


Fig. 5

NEW!



TOOLESS CONNECTORS

ITEM #	DESCRIPTION
CFC-9100 FOR RG-59	JUST PREP AND PUSH
CFC-9101 FOR RG-6	NO TOOLS REQUIRED
	HIGH PULL STRENGTH



ITEM # CFC-7113 DESCRIPTION 2PC, F MALE FOR RG-59 W/ 1/2" RING



ITEM # CFS-1003 DESCRIPTION F-FEMALE TO FEMALE LONG VERSION COUPLER



ITEM # CFC-7110 DESCRIPTION F MALE FOR RG-59 W/ 1/4" ATTACHED RING



ITEM # CFS-0184 DESCRIPTION F MALE TO MALE COUPLER



ITEM # CFC-7120 DESCRIPTION F MALE FOR RG-11 PVC W/SEPARATE RING



ITEM # CAD-1036 DESCRIPTION F FEMALE TO UHF MALE ADAPTER



ITEM # CFC-7119 DESCRIPTION F.MALE FOR RG-11 PVC -1PC CONSTRUCTION



ITEM # CAD-1037 DESCRIPTION F FEMALE TO N MALE ADAPTER

50 OHM BNC 3PC. MALE CRIMP UNIVERSAL



Item #

DESCRIPTION

CBN-3117 DUAL FERRULE BNC 3PC MALE FOR RG-59 PVC & PLENUM

MINI-UHF 3PC. MALE CRIMP



Item #

DESCRIPTION

CMU-3110 MINI-UHF 3 PC. MALE CRIMP FOR RG-59 PVC
CMU-3122 MINI-UHF 3 PC. MALE CRIMP FOR RG-8X

50 OHM BNC 3PC. MALE CRIMP



Item #

DESCRIPTION

CBN-3310 BNC 3PC MALE FOR RG-59 PVC W/20 GA. CNTR.
CBN-3219 BNC 3PC MALE FOR BELDEN 8218 MINI COAX
CBN-3122 BNC 3PC MALE CRIMP FOR RG-8X

TNC 3PC. MALE CRIMP



Item #

DESCRIPTION

CTN-2110 TNC 3PC. MALE CRIMP FOR RG-59
CTN-2122 TNC 3PC. MALE CRIMP FOR RG-8X

75 OHM BNC 3PC. MALE CRIMP



Item #

DESCRIPTION

CBB-3221 75 OHM BNC 3 PC. MALE CRIMP FOR RG-179

TNC FEMALE CRIMP AND SOLDIER



FIG. 1

FIG. 2

Item #

DESCRIPTION

FIG.

CTN-3212 TNC 3 PC. FEMALE CRIMP FEMALE FOR RG-58 1
CTN-3312 TNC FEMALE SOLDER CHASSIS MOUNT 3/8" MTG. 2

50 OHM BNC 2PC. MALE RIGHT ANGLE CRIMP

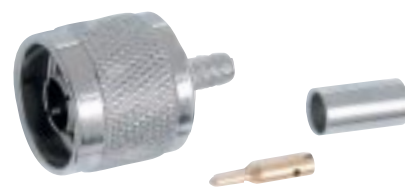


Item #

DESCRIPTION

CBN-2123 BNC 2PC. RIGHT ANGLE CRIMP FOR RG-59 PVC
CBN-2124 BNC 2PC. RIGHT ANGLE CRIMP FOR RG-6 PVC

N 3PC. MALE CRIMP



Item #

DESCRIPTION

CNC-3192 N 3PC. MALE CRIMP RG8/11/213 W/ 10 AWG CENTER
CNC-3024 N 3PC. FEMALE CRIMP FOR RG-58

50 OHM BNC 3PC. SOLDER



ITEM #	DESCRIPTION
CBN-6110	BNC 3PC. SOLDER/CLAMP FOR RG-59
CBN-6112	BNC 3PC. SOLDER/CLAMP FOR RG-58

TWINAXIAL CONNECTORS



FIG.	ITEM #	DESCRIPTION
1	CTW-1000	TWIN-AX MALE CLAMP CONNECTOR
2	CTW-1001	TWIN-AX FEMALE/FEMALE IN-LINE SPLICE
3	CTW-1002	TWIN-AX FEMALE CLAMP CONNECTOR



ITEM #	DESCRIPTION
CAD-1003	BNC MALE TO BNC MALE COUPLER



ITEM #	DESCRIPTION
CAD-1071	N MALE TO UHF FEMALE ADAPTER



ITEM #	DESCRIPTION
CAD-1057	BNC MALE TO RCA MALE ADAPTER



ITEM #	DESCRIPTION
CAD-1200	SMA FEMALE TO N MALE ADAPTER



ITEM #	DESCRIPTION
CAD-1056	BNC FEMALE TO N FEMALE ADAPTER



ITEM #	DESCRIPTION
CAD-1060	N MALE TO FEMALE RIGHT ANGLE ADAPTER



ITEM #

CAD-1201

DESCRIPTION

SMA MALE TO BNC FEMALE ADAPTER



ITEM #

CAD-1068

DESCRIPTION

TNC FEMALE TO MINI-UHF MALE ADAPTER



ITEM #

CAD-1082

DESCRIPTION

BNC FEMALE TO MINI UHF MALE ADAPTER



ITEM #

CAD-1081

DESCRIPTION

MINI UHF FEMALE TO TNC MALE ADAPTER



ITEM #

CAD-1067

DESCRIPTION

N FEMALE TO MINI-UHF MALE ADAPTER



ITEM #

CAD-1069

DESCRIPTION

TNC MALE TO FEMALE RIGHT ANGLE ADAPTER



ITEM #

CAD-1066

DESCRIPTION

N-FEMALE TO UHF MALE ADAPTER



ITEM #

CAD-1072

DESCRIPTION

UHF MALE TO RCA FEMALE ADAPTER



Fig. 1



Fig. 2



Fig. 3

In addition to the complete line of professional installation tools already offered, Quest has now added a new RF ratchet crimp tool frame that comes without die sets giving installers the choice of purchasing individual die sets to fit their specific requirements. This tool is offered in conjunction with a new series of interchangeable die sets, which are offered for many cable and connector types. As an accessory product, newly offered are thumbscrew sets, which replace the traditional die screws and gives the user the ability to quickly remove and interchange different dies securely.

PRO RF RATCHET CRIMP TOOL W/O DIES

ITEM #	DESCRIPTION	FIG.
TRF-1000	PROFESSIONAL RATCHET CRIMP TOOL W/O DIES	1

THUMBSCREW SETS

ITEM #	DESCRIPTION	FIG.
TRS-1000	THUMBSCREW SET FOR TRF RF CRIMP TOOL SERIES 2	

DIE SET FOR TRF SERIES RF CRIMP TOOLS

ITEM #	DESCRIPTION	FIG.
TRD-3000	TRF SERIES DIE SET .255/.213/.068 HEX SIZES	3
TRD-3001	TRF SERIES DIE SET .305/.228/.068 HEX SIZES	3
TRD-3010	TRF SERIES DIE SET .213/.190/.068/.042 HEX SIZES	3
TRD-3015	TRF SERIES DIE SET .255/.213/.068/.042 HEX SIZES	3
TRD-3020	TRF SERIES DIE SET .350/.320/.255 HEX SIZES	3
TRD-3030	TRF SERIES DIE SET .429/.100 HEX SIZES	3
TRD-3035	TRF SERIES DIE SET .213/.178/.068/.042 HEX SIZES	3
TRD-3040	TRF SERIES DIE SET .324/.265/.068/.042 HEX SIZES	3
TRD-3045	TRF SERIES DIE SET .324/.178/.068 HEX SIZES	3
TRD-3051	TRF SERIES DIE SET 10-22 AWG INSULATED TERM.	3
TRD-3054	TRF SERIES DIE SET 12-22 AWG NON-INS. TERM.	3

Please see Quest Full Line Catalog #Q700 for complete interconnect products



The QUEST Professional Ratchet Crimp Tool series provides installers the best choice in professional connector crimp tools. These tools are designed for durable use and provides long life dependability and consistent, reliable terminations, crimp after crimp. They feature a 10" frame design, which allows increased leverage during the crimp process with a ratchet action mechanism providing easy, repeatable and reliable crimps. The tools come complete with die sets, which are also interchangeable. **Lifetime warranted.**

RATCHET CRIMP TOOL

ITEM #	DESCRIPTION	FIG.
TRF-3060	PROFESSIONAL UNIVERSAL RATCHET CRIMP TOOL WITH DIES .325 / .255 / .213 / .110 / .068	1

D-SUB CONTACT CRIMP TOOLS

ITEM #	DESCRIPTION	FIG.
TRF-4000	RATCHET PRO GRADE CONTACT CRIMPER FOR D-SUB MINIATURE OPEN BARREL CONTACTS, V.35 CONTACTS AND NON-INSULATED PINS-18-22 AWG, 24-30 AWG WITH TENSION ADJUSTMENT.	2
TFC-5000	NON-RATCHET CRIMP TOOL FOR OPEN BARREL D-SUB CONTACTS 20-24-28 AWG-WITH CUTTER	3

REPLACEMENT BLADES FOR STRIPPERS & TOOLS

ITEM #	DESCRIPTION	FIG.
TSB-5000	REPLACEMENT BLADE FOR TCS-5000	N/S
TSB-5010	REPLACEMENT BLADE FOR TCS-5010	N/S
TSB-5020	BLADE SET FOR TCS-5020	N/S
TSB-5021	RED 3-STEP BLADE SET FOR TCS-5020	N/S
TSB-5022	GREEN 2-STEP BLADE SET FOR TCS-5020	N/S
TSB-5023	BLUE 2-STEP BLADE SET FOR TCS-5020	N/S
TSB-6000	REPLACEMENT BLADES FOR TEL-6000 CRIMPER	N/S
TSB-6001	REPLACEMENT BLADES FOR TEL-6001 CRIMPER	N/S

Please see Quest Full Line Catalog #Q700 for complete interconnect products



Fig. 1



Fig. 2



Fig. 3



Fig. 1



Fig. 2



Fig. 3



Fig. 4



Fig. 5



Fig. 6

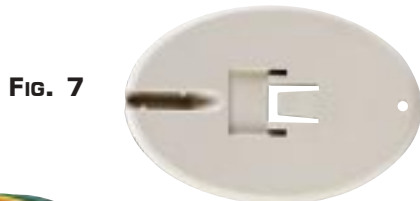


Fig. 7



Fig. 8

FIBER OPTIC MEDIA CONVERTERS

ITEM #	DESCRIPTION	FIG.
NAP-6000	ETHERNET TP TO ST FIBER MEDIA BRIDGE "IEEE 802.3. IEEE 802.3u, 10/100 BASE-TX" 100 BASE-FX - RJ-45 AND ST CONNECTORS FULL/HALF DUPLEX SELECTABLE	1
NAP-6001	ETHERNET TP TO SC FIBER MEDIA BRIDGE "IEEE 802.3. IEEE 802.3u, 10/100 BASE-TX" 100 BASE-FX - RJ-45 AND SC CONNECTORS FULL/HALF DUPLEX SELECTABLE	2

FIBER OPTIC TOOLS

ITEM #	DESCRIPTION	FIG.
TFS-1200	FIBER KEVLAR SCISSORS • NON-SLIP SERRATED BLADES • HIGH-LEVERAGE - QUICK ACTION • SHEER CUTS WITH EASE	3
TFS-1300	FIBER OPTIC STRIPPING TOOL • STRIPS OUTER JACKET • STRIPS INSULATION .010-.0125 • CUTS FIBER • ROTARY FUNCTION	4

4-WAY UTP STRIPPING TOOL

ITEM #	DESCRIPTION	FIG.
TEL-6105	4-WAY STRIPPING TOOL-CUTS FLAT AND ROUND TELEPHONE & UTP CABLE-STRIPS FLAT SILVER SATIN TELEPHONE CABLE AND UTP CABLE WITH O.D. ADJUSTMENT SCREW	5

CABLE SLITTER

ITEM #	DESCRIPTION	FIG.
TCS-1100	ADJUSTABLE CABLE SLITTER FOR CABLE O.D. 1/8" TO 1.0" DIA. ADJUSTABLE BLADE DEPTH NEW ERGONOMIC ABS HANDLE DESIGN	6

PALM SAVER TERMINATION AID

ITEM #	DESCRIPTION	FIG.
TEL-4000	PALM SAVER TERMINATION AID FOR TERMINATING KEYSTONE JACKS	7

PALM SAVER TERMINATION AID

ITEM #	DESCRIPTION	FIG.
GMP-1000	10 PIECE ALLIGATOR JUMPERS 20 AWG	8

Quest Technology launches its new line of Digital Optical Cables, sometimes referred to as Toslink Cables for use in digital audio applications and is manufactured with high-grade optical cable with high-purity optical fiber. It is especially suited for digital signal transmission without EMI. There are 2 types of terminations used with digital optical cables; one is referred to as Toslink, which derives from its developer, Toshiba, and the other is a 3.5mm Mini type that resembles a 3.5mm miniature male connector. Quest's cable assemblies feature metal connector housings for added durability and come in a high-tech black color. In addition, Quest offers a complete assortment of interface adapters and couplers.

DIGITAL OPTICAL CABLE ASSEMBLIES

ITEM #	DESCRIPTION	FIG.
NFT-1003	3 FT. TOSLINK TO TOSLINK CABLE ASSEMBLY	1
NFT-1006	6 FT. TOSLINK TO TOSLINK CABLE ASSEMBLY	1
NFT-1010	10 FT. TOSLINK TO TOSLINK CABLE ASSEMBLY	1
NFT-2003	3 FT. TOSLINK TO 3.5MM MINI CABLE ASSEMBLY	2
NFT-2006	6 FT. TOSLINK TO 3.5MM MINI CABLE ASSEMBLY	2
NFT-2010	10 FT. TOSLINK TO 3.5MM MINI CABLE ASSEMBLY	2
NFT-3003	3 FT. 3.5MM MINI TO 3.5MM MINI CABLE ASSEMBLY	3
NFT-3006	6 FT. 3.5MM MINI TO 3.5MM MINI CABLE ASSEMBLY	3
NFT-3010	10 FT. 3.5MM MINI TO 3.5MM MINI CABLE ASSEMBLY	3

DIGITAL OPTICAL ADAPTERS

ITEM #	DESCRIPTION	FIG.
NFT-5001	TOSLINK FEMALE TO 3.5MM MINI MALE ADAPTER	4
NFT-5002	3.5MM MINI FEMALE TO TOSLINK MALE ADAPTER	5
NFT-5003	TOSLINK FEMALE TO TOSLINK FEMALE COUPLER	6
NFT-5004	3.5MM MINI FEMALE TO 3.5MM MINI FEMALE COUPLER	6
NFT-5005	RIGHT ANGLE TOSLINK MALE TO TOSLINK FEMALE	7
NFT-5006	RIGHT ANGLE 3.5MM MINI MALE TO 3.5MM FEMALE	7
NFT-5007	TOSLINK 2-WAY OPTICAL SPLITTER	8

Please see Quest Full Line Catalog #Q700 for complete interconnect products

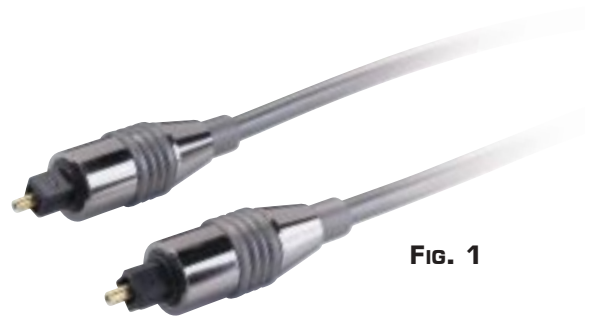


FIG. 1



FIG. 2



FIG. 3

DIGITAL AUDIO



FIG. 5



FIG. 4



FIG. 7



FIG. 6



FIG. 8



FIG. 1



FIG. 2



FIG. 3



FIG. 4



FIG. 5



FIG. 6



FIG. 7



FIG. 8



FIG. 9



FIG. 10



FIG. 11



FIG. 12



FIG. 13



FIG. 14

To complement our lines of audio and video related products, Quest has now added a series of audio and video connectors and adapters. These include 3.5mm connectors in plastic or metal housings, RCA connectors also in plastic or metal housings along with a series of Mini Din connectors and in-line adapters. Totally new are triple molded in-line adapters with triple-RCA, which supports video, and stereo audio with color-coded insulators in yellow, red and white. In this design, Quest is also offering a triple molded in-line coupler featuring S-VHS (Mini Din 4) and 2 audio RCA couplers which have color-coded insulators to delineate right and left audio channels.

3.5 MM CONNECTORS

ITEM #	DESCRIPTION	FIG.
CAU-1031	3.5mm MONO MALE PLUG, PLASTIC CAP	1
CAU-1034	3.5mm MONO MALE PLUG, METAL CAP	2
CAU-1011	3.5mm STEREO MALE PLUG, PLASTIC CAP	3
CAU-1024	3.5mm STEREO MALE PLUG, METAL CAP	4
CAU-1002	3.5mm 4 CONDUCTOR PLUG, PLASTIC CAP	5

RCA CONNECTORS

ITEM #	DESCRIPTION	FIG.
CAU-2011	RCA MALE PLUG - PLASTIC CAP - BLACK	6
CAU-2013	RCA MALE PLUG - PLASTIC CAP - RED	6
CAU-2001	RCA MALE PLUG - METAL CAP - BLACK	7
CAU-2003	RCA MALE PLUG - METAL CAP - RED	7
CAU-2021	RCA FEMALE JACK - METAL CAP - BLACK	8
CAU-2023	RCA FEMALE JACK - METAL CAP - RED	8
CAU-4001	RCA IN-LINE FEMALE - FEMALE COUPLER	9

MINI DIN CONNECTORS & ADAPTERS

ITEM #	DESCRIPTION	FIG.
CAD-2000	S-VHS MINI DIN 4 BULKHEAD COUPLER 1/2" MTG.	10
CAU-2101	MINI DIN 4 CONTACT MALE CONNECTOR	11
CAU-3004	MINI DIN 4 FEMALE-FEMALE IN-LINE COUPLER	12

IN-LINE VIDEO-AUDIO COUPLERS

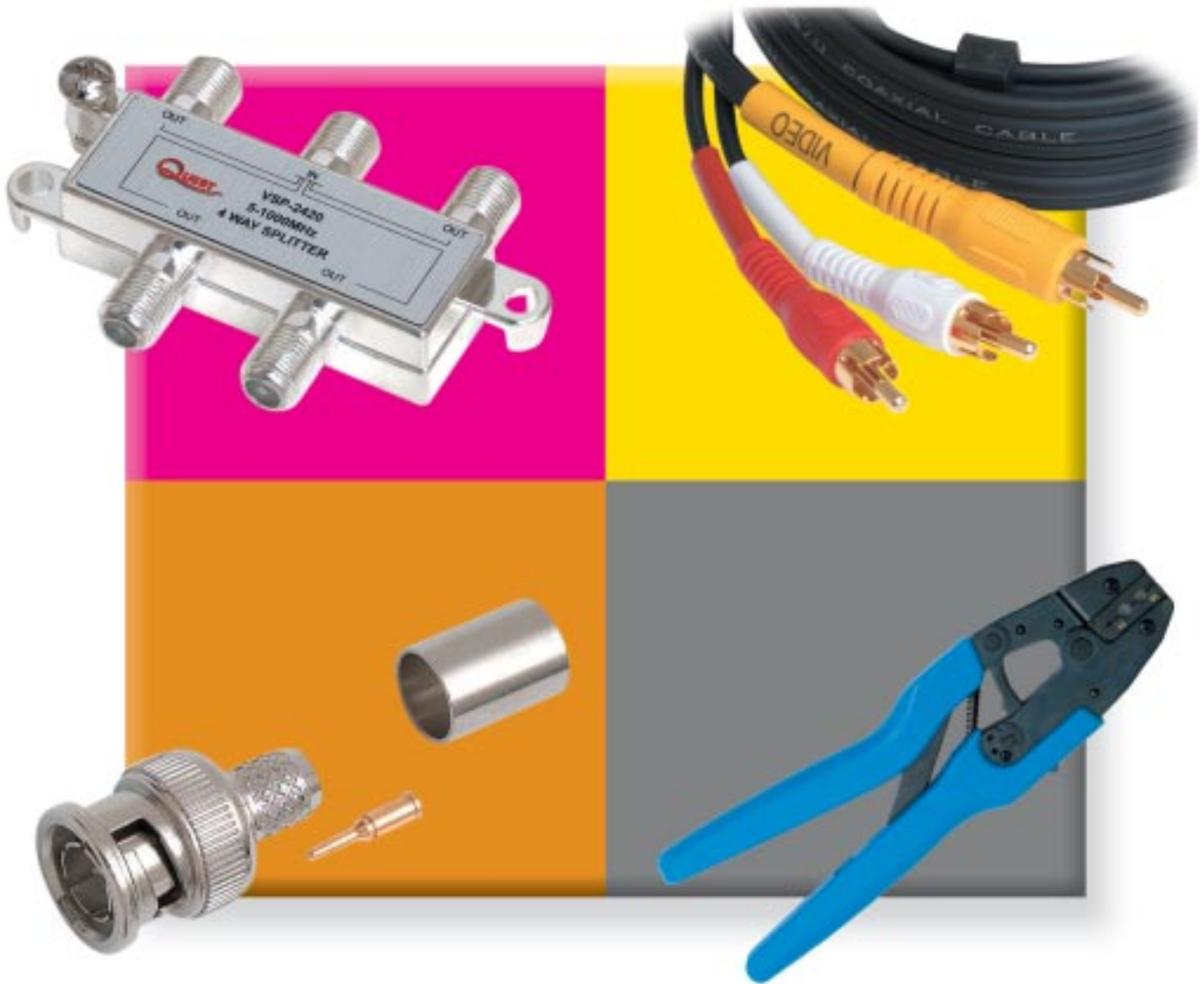
ITEM #	DESCRIPTION	FIG.
CAU-4003	TRIPLE RCA JACK COUPLER RED-WHITE-YELLOW	13
CAU-4103	COMBO S-VHS - 2 RCA COUPLER RED-WHITE	14

Please see Quest Full Line Catalog #Q700 for complete interconnect products

CAD-1003 pg.20	DSC-2150 pg. 13	NCC-8206 pg. 17	NPC-0307 pg. 02	NPC-1650 pg. 02	NWM-0402 pg. 10
CAD-1036 pg.18	DSC-2237 pg. 13	NCC-8210 pg. 17	NPC-0310 pg. 02	NPC-1800 pg. 02	NWM-0701 pg. 10
CAD-1037 pg.18	DSC-2250 pg. 13	NCC-8303 pg. 17	NPC-0315 pg. 02	NPC-1801 pg. 02	NWM-0702 pg. 10
CAD-1056 pg.20	DSG-1025 pg. 13	NCC-8306 pg. 17	NPC-0325 pg. 02	NPC-1803 pg. 02	NWM-1000 pg. 07
CAD-1057 pg.20	DSG-1915 pg. 13	NCC-8310 pg. 17	NPC-0503 pg. 02	NPC-1805 pg. 02	NWM-1010 pg. 07
CAD-1060 pg.20	DSG-3750 pg. 13	NCC-8406 pg. 17	NPC-0507 pg. 02	NPC-1807 pg. 02	NWM-1011 pg. 07
CAD-1066 pg.21	DSH-5437 pg. 13	NCC-8410 pg. 17	NPC-0510 pg. 02	NPC-1810 pg. 02	NWM-1012 pg. 07
CAD-1067 pg.21	DSH-5450 pg. 13	NCC-8506 pg. 17	NPC-0515 pg. 02	NPC-1815 pg. 02	NWM-1013 pg. 07
CAD-1068 pg.21	DSH-5509 pg. 13	NCC-8510 pg. 17	NPC-0525 pg. 02	NPC-1825 pg. 02	NWM-1020 pg. 07
CAD-1069 pg.21	DSH-5525 pg. 13	NCC-9106 pg. 16	NPC-0603 pg. 02	NPC-1850 pg. 02	NWM-1021 pg. 07
CAD-1071 pg.20	DSV-1000 pg. 13	NCC-9115 pg. 16	NPC-0607 pg. 02	NPC-1900 pg. 02	NWM-1022 pg. 07
CAD-1072 pg.21	DSV-1001 pg. 13	NFP-1007 pg. 05	NPC-0610 pg. 02	NPC-1901 pg. 02	NWM-1032 pg. 07
CAD-1081 pg.21	DSV-1002 pg. 13	NFP-1008 pg. 05	NPC-0615 pg. 02	NPC-1903 pg. 02	NWM-2001 pg. 11
CAD-1082 pg.21	DSV-1003 pg. 13	NFT-1003 pg. 25	NPC-0625 pg. 02	NPC-1905 pg. 02	NWM-2002 pg. 11
CAD-1200 pg.20	DSV-1004 pg. 13	NFT-1006 pg. 25	NPC-0803 pg. 02	NPC-1907 pg. 02	NWM-2003 pg. 11
CAD-1201 pg.21	GMP-1000 pg. 24	NFT-1010 pg. 25	NPC-0807 pg. 02	NPC-1910 pg. 02	NWM-2004 pg. 11
CAD-2000 pg.26	MUB-2103 pg. 14	NFT-2003 pg. 25	NPC-0810 pg. 02	NPC-1915 pg. 02	NPC-2007 pg. 11
CAU-1002 pg.26	NAP-6000 pg. 24	NFT-2006 pg. 25	NPC-0815 pg. 02	NPC-1925 pg. 02	NWM-3001 pg. 11
CAU-1011 pg.26	NAP-6001 pg. 24	NFT-2010 pg. 25	NPC-0825 pg. 02	NPC-1950 pg. 02	NWM-3002 pg. 11
CAU-1024 pg.26	NBW-1051 pg. 03	NFT-3003 pg. 25	NPC-0903 pg. 02	NPC-2303 pg. 02	NWM-3004 pg. 11
CAU-1031 pg.26	NBW-1052 pg. 03	NFT-3006 pg. 25	NPC-0907 pg. 02	NPC-2305 pg. 02	NWM-3006 pg. 11
CAU-1034 pg.26	NBW-1053 pg. 03	NFT-3010 pg. 25	NPC-0910 pg. 02	NPC-2307 pg. 02	NWM-3014 pg. 11
CAU-2001 pg.26	NBW-1055 pg. 03	NFT-5001 pg. 25	NPC-0915 pg. 02	NPC-2310 pg. 02	NWM-3016 pg. 11
CAU-2001 pg.26	NBW-1056 pg. 03	NFT-5002 pg. 25	NPC-0925 pg. 02	NPC-2315 pg. 02	NWM-3114 pg. 11
CAU-2003 pg.26	NBW-1058 pg. 03	NFT-5003 pg. 25	NPC-1100 pg. 02	NPC-2325 pg. 02	NWM-3116 pg. 11
CAU-2003 pg.26	NBW-1059 pg. 03	NFT-5004 pg. 25	NPC-1101 pg. 02	NPC-2503 pg. 02	NWM-4000 pg. 08
CAU-2011 pg.26	NBW-1062 pg. 03	NFT-5005 pg. 25	NPC-1103 pg. 02	NPC-2505 pg. 02	NPC-4001 pg. 08
CAU-2011 pg.26	NBW-1069 pg. 03	NFT-5006 pg. 25	NPC-1105 pg. 02	NPC-2507 pg. 02	NWM-5000 pg. 09
CAU-2013 pg.26	NBW-1151 pg. 03	NFT-5007 pg. 25	NPC-1107 pg. 02	NPC-2510 pg. 02	NWM-5001 pg. 09
CAU-2013 pg.26	NBW-1152 pg. 03	NGC-1077 pg. 13	NPC-1110 pg. 02	NPC-2515 pg. 02	NWM-5301 pg. 09
CAU-2021 pg.26	NBW-1153 pg. 03	NGC-1088 pg. 13	NPC-1115 pg. 02	NPC-2525 pg. 02	NWM-6000 pg. 11
CAU-2021 pg.26	NBW-1155 pg. 03	NGC-5101 pg. 13	NPC-1125 pg. 02	NRS-1801 pg. 12	NRS-6191 pg. 08
CAU-2023 pg.26	NBW-1156 pg. 03	NGC-5102 pg. 13	NPC-1150 pg. 02	NRS-1805 pg. 12	NWM-6271 pg. 08
CAU-2023 pg.26	NBW-1158 pg. 03	NGC-5103 pg. 13	NPC-1200 pg. 02	NRS-3001 pg. 12	NWM-7190 pg. 08
CAU-2101 pg.26	NBW-1159 pg. 03	NIP-1101 pg. 06	NPC-1201 pg. 02	NRS-3005 pg. 12	NWM-7191 pg. 08
CAU-3004 pg.26	NBW-1426 pg. 03	NIP-1102 pg. 06	NPC-1203 pg. 02	NRS-3011 pg. 12	NWM-7321 pg. 08
CAU-4001 pg.26	NBW-1626 pg. 03	NIP-1103 pg. 06	NPC-1205 pg. 02	NRS-3015 pg. 12	TBN-1001 pg. 05
CAU-4001 pg.26	NBW-1826 pg. 03	NIP-1104 pg. 06	NPC-1207 pg. 02	NRS-3021 pg. 12	TCS-1100 pg. 24
CBB-3221 pg.19	NBW-2428 pg. 03	NKJ-4101 pg. 04	NPC-1210 pg. 02	NRS-3025 pg. 12	TEL-4000 pg. 24
CBN-2123 pg.19	NBW-2628 pg. 03	NKJ-4102 pg. 04	NPC-1215 pg. 02	NRS-3031 pg. 12	TEL-6105 pg. 24
CBN-2124 pg.19	NBW-2828 pg. 03	NKJ-4107 pg. 04	NPC-1225 pg. 02	NRS-3035 pg. 12	TFC-5000 pg. 23
CBN-3117 pg.19	NCB-1003 pg. 06	NKJ-4108 pg. 04	NPC-1250 pg. 02	NRS-3041 pg. 12	TFS-1200 pg. 24
CBN-3122 pg.19	NCB-1004 pg. 06	NKJ-4601 pg. 04	NPC-1300 pg. 02	NRS-3045 pg. 12	TFS-1300 pg. 24
CBN-3219 pg.19	NCB-1005 pg. 06	NKJ-4607 pg. 04	NPC-1301 pg. 02	NRS-3051 pg. 12	TRD-3000 pg. 22
CBN-3310 pg.19	NCB-1050 pg. 06	NKJ-4608 pg. 04	NPC-1305 pg. 02	NRS-3055 pg. 12	TRD-3001 pg. 22
CBN-6110 pg.20	NCB-1100 pg. 06	NKJ-4801 pg. 04	NPC-1307 pg. 02	NRS-3062 pg. 12	TRD-3010 pg. 22
CBN-6112 pg.20	NCB-2000 pg. 06	NKJ-5002 pg. 04	NPC-1310 pg. 02	NRS-3091 pg. 12	TRD-3015 pg. 22
CFC-7110 pg.18	NCC-3006 pg. 15	NKJ-5003 pg. 04	NPC-1315 pg. 02	NRS-3121 pg. 12	TRD-3020 pg. 22
CFC-7113 pg.18	NCC-3100 pg. 15	NKJ-5301 pg. 04	NPC-1325 pg. 02	NRS-3131 pg. 12	TRD-3030 pg. 22
CFC-7119 pg.18	NCC-3106 pg. 15	NKJ-5302 pg. 04	NPC-1350 pg. 02	NRS-3141 pg. 12	TRD-3035 pg. 22
CFC-7120 pg.18	NCC-3110 pg. 15	NKJ-5307 pg. 04	NPC-1500 pg. 02	NRS-3151 pg. 12	TRD-3040 pg. 22
CFC-9100 pg.18	NCC-3200 pg. 15	NKJ-5308 pg. 04	NPC-1501 pg. 02	NTC-0421 pg. 05	TRD-3045 pg. 22
CFC-9101 pg.18	NCC-3206 pg. 15	NMP-8325 pg. 05	NPC-1503 pg. 02	NTC-0422 pg. 05	TRD-3051 pg. 22
CFS-0184 pg.18	NCC-3210 pg. 15	NMP-8425 pg. 05	NPC-1505 pg. 02	NTC-0621 pg. 05	TRD-3054 pg. 22
CFS-1003 pg.18	NCC-3906 pg. 15	NMP-8510 pg. 05	NPC-1507 pg. 02	NTC-0622 pg. 05	TRF-1000 pg. 22
CMU-3110 pg.19	NCC-4006 pg. 16	NMP-8625 pg. 05	NPC-1510 pg. 02	NTC-0821 pg. 05	TRF-3060 pg. 23
CMU-3122 pg.19	NCC-4010 pg. 16	NPC-0103 pg. 02	NPC-1515 pg. 02	NTC-0822 pg. 05	TRF-4000 pg. 23
CNC-3024 pg.19	NCC-4025 pg. 16	NPC-0107 pg. 02	NPC-1525 pg. 02	NUB-2003 pg.14	TRS-1000 pg. 22
CNC-3192 pg.19	NCC-5306 pg. 16	NPC-0110 pg. 02	NPC-1550 pg. 02	NUB-2006 pg.14	TSB-5000 pg. 23
CTN-2110 pg.19	NCC-5310 pg. 16	NPC-0115 pg. 02	NPC-1600 pg. 02	NUB-2010 pg.14	TSB-5010 pg. 23
CTN-2122 pg.19	NCC-6106 pg. 16	NPC-0125 pg. 02	NPC-1601 pg. 02	NUB-2106 pg.14	TSB-5020 pg. 23
CTN-3212 pg.19	NCC-6110 pg. 16	NPC-0203 pg. 02	NPC-1603 pg. 02	NUB-2110 pg.14	TSB-5021 pg. 23
CTN-3312 pg.19	NCC-6206 pg. 16	NPC-0207 pg. 02	NPC-1605 pg. 02	NUB-3000 pg.14	TSB-5022 pg. 23
CTW-1000 pg.20	NCC-6210 pg. 16	NPC-0210 pg. 02	NPC-1607 pg. 02	NUB-4000 pg.14	TSB-5023 pg. 23
CTW-1001 pg.20	NCC-8006 pg. 17	NPC-0215 pg. 02	NPC-1610 pg. 02	NUB-5000 pg.14	TSB-6000 pg. 23
CTW-1002 pg.20	NCC-8010 pg. 17	NPC-0225 pg. 02	NPC-1615 pg. 02	NUB-5001 pg.14	TSB-6001 pg. 23
DSC-2137 pg.13	NCC-8016 pg. 15	NPC-0303 pg. 02	NPC-1625 pg. 02	NWM-0401 pg. 10	



... Connect with Quest



www.qtinet.com