



Product Data Sheets

C.87/8 Series

C.87/0 Series

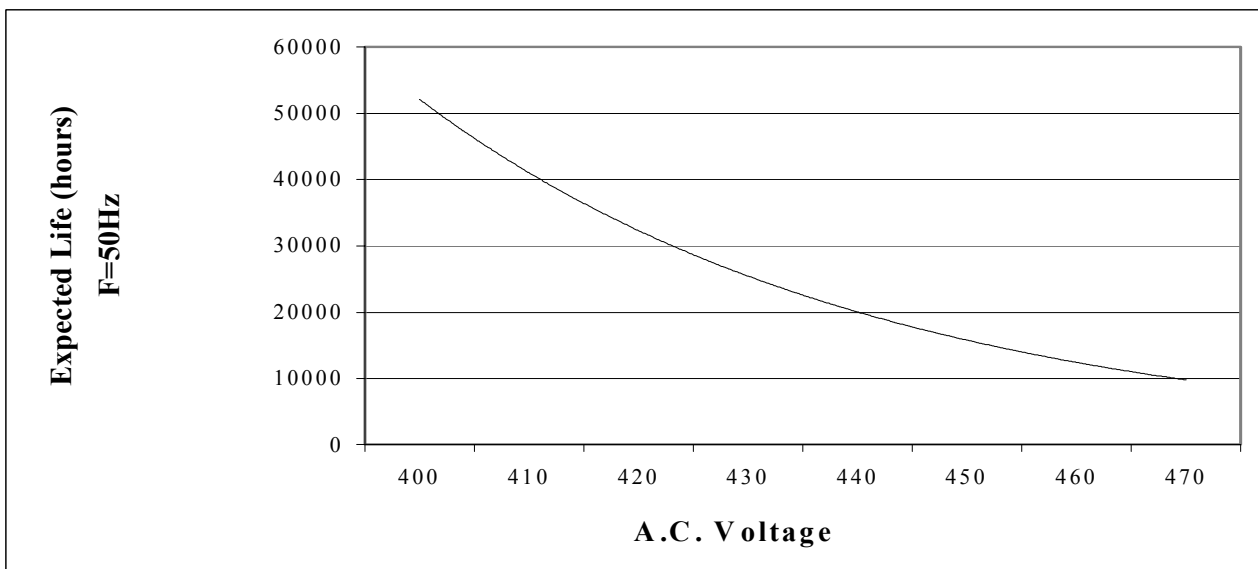


TYPICAL APPLICATIONS: the capacitor is used in series to the start-winding of the single-phase electric motor, allowing its starting and increasing the torque during work. Main application fields: low power electric motors compressors. The choice of capacitor depends on expected life length and the mechanical connection of the user.

PRODUCT MARKING : TYPE A (STANDARD)

EXAMPLE

| | |
|--|---|
| ARCOTRONICS | C.87.8AF1 MKP 6 μF \pm 5 % |
| 420V~ 30000h/CLASS A 470V~ 10000h/CLASS B | |
| -25/85/21 | EN 60252 |
| P2 | |
| | |



| GENERAL DATA | SIZES TABLES | FAST-ON | BIPOLAR CABLE | DRAWINGS |
|--------------|--------------|-----------|---------------|-----------|
| 41 | 42 | 46 | 48 | 57 |

General technical data

| | |
|--|---|
| Reference standards | IEC 252: 1993 EN 60252: 1994 CEI EN 60252: 1994 |
| Approval EN 60 252 | VDE Testing and Certification Institute |
| UL810 Recognised Component Mark | Approved up 500 Vac (diameter \geq 30 mm) Standard Marking: 450 Vac 60 Hz. -25/+70 °C. Please contact us for other kind of marking |
| CSA CAN/CSA – C22.2 n.14-95 CSA Std. C22.2 No 190 - M1985 | 600V – Diameters 50 – 55 – 60 mm 240V – Diameters 30 – 35 – 40 – 45 mm |
| Type of working: | Continuous |
| Operating class: | CLASS B – 10.000 hours, 470 Volt a.c. CLASS A – 30.000 hours, 420 Volt a.c. |
| Operating Min. / Max. Temperature: | - 25 / 85 °C |
| Rated Voltage Vn (a.c.): | 500 Volt a.c. |
| Rated Frequency (Hz) | 50 - 60 Hz |
| Voltage rise/fall time (max): | 20 Volt / μ s |
| Maximum Permissible Voltage: | 1.10 x Rated Voltage |
| Maximum Permissible Current: | 1.30 x Rated Current |
| Dissipation factor, Tg δ : | 20 x 10 ⁻⁴ at 20°C, 50 Hz |
| Safety class: | P2 |
| Maximum altitude: | 2000 m |
| Capacitance Tolerance (standard): | \pm 5 % |
| Mounting: | Any position |
| Case: | Aluminium |
| Disk: | Thermoplastic Polymer V0 (UL94) |
| Filling Resin: | Polyurethane |
| Dielectric: | Polypropylene |
| Plates: | Self-healing metal layer |
| Voltage Test terminal to terminal: | 2 Vn for 2 s |
| Voltage Test terminal to case | 2.000 Volt for 2 s |
| Leakage – Clearance in air between parts under voltage: | \geq 5mm |
| Leakage – Clearance in air between parts under voltage and accessible metal parts: | \geq 6mm |
| Vibration test: | IEC 68-2-6 |
| Max Tightening torque: | 5 Nm (M8) – 10 Nm (M12) |


| Rated Cap. | | Rated Current | Max dv/dt | FAST-ON | | | BIPOLAR CABLE | | | Element weight FAST-ON |
|---------------|---|---------------|-------------------|----------|--------|-------|---------------|--------|-------|------------------------|
| | | | | Diameter | Height | Pack. | Diameter | Height | Pack. | |
| μF | | A | V / μS | mm | mm | pcs | mm | mm | pcs | g |
| 1.0 | | 0.15 | 20 | 30 | 48 | 115 | 30 | 70 | 36 | 36 |
| 1.5 | | 0.22 | 20 | 30 | 48 | 115 | 30 | 70 | 36 | 36 |
| 2.0 | | 0.29 | 20 | 30 | 48 | 115 | 30 | 70 | 36 | 36 |
| 2.5 | | 0.37 | 20 | 30 | 48 | 115 | 30 | 70 | 36 | 36 |
| 3.0 | | 0.44 | 20 | 30 | 48 | 115 | 30 | 70 | 36 | 36 |
| 3.15 | | 0.47 | 20 | 30 | 48 | 115 | 30 | 70 | 36 | 36 |
| 3.5 | | 0.52 | 20 | 35 | 48 | 86 | 35 | 70 | 36 | 49 |
| 4.0 | | 0.59 | 20 | 35 | 48 | 86 | 35 | 70 | 36 | 49 |
| 4.5 | | 0.66 | 20 | 35 | 48 | 86 | 35 | 70 | 36 | 49 |
| 5.0 | | 0.74 | 20 | 35 | 48 | 86 | 35 | 70 | 36 | 49 |
| 6.0 | | 0.88 | 20 | 30 | 78 | 115 | 30 | 100 | 36 | 58 |
| 7.0 | | 1.03 | 20 | 30 | 78 | 115 | 30 | 100 | 36 | 58 |
| 8.0 | | 1.18 | 20 | 30 | 78 | 115 | 30 | 100 | 36 | 58 |
| 10.0 | | 1.47 | 20 | 35 | 78 | 86 | 35 | 100 | 36 | 79 |
| 12.0 | | 1.77 | 20 | 35 | 78 | 86 | 35 | 100 | 36 | 79 |
| 12.5 | | 1.84 | 20 | 35 | 78 | 86 | 35 | 100 | 36 | 79 |
| 14.0 | | 2.07 | 20 | 40 | 78 | 62 | 40 | 100 | 25 | 103 |
| 16.0 | | 2.36 | 20 | 40 | 78 | 62 | 40 | 100 | 25 | 103 |
| 18.0 | | 2.66 | 20 | 45 | 78 | 50 | 45 | 100 | 25 | 130 |
| 20.0 | | 2.95 | 20 | 45 | 78 | 50 | 45 | 100 | 25 | 130 |
| 22.0 | | 3.25 | 20 | 45 | 78 | 50 | 45 | 100 | 25 | 130 |
| 25.0 | | 3.69 | 20 | 45 | 98 | 50 | 45 | 120 | 25 | 165 |
| 30.0 | | 4.43 | 20 | 45 | 98 | 50 | 45 | 120 | 25 | 165 |
| 31.5 | | 4.65 | 20 | 45 | 133 | 50 | 45 | 120 | 25 | 165 |
| 35.0 | | 5.16 | 20 | 45 | 133 | 50 | 45 | 155 | 25 | 222 |
| 40.0 | | 5.90 | 20 | 45 | 133 | 50 | 45 | 155 | 25 | 222 |
| 45.0 | | 6.64 | 20 | 50 | 133 | 40 | 50 | 155 | 16 | 274 |
| 50.0 | ⊗ | 7.38 | 20 | 50 | 133 | 40 | 50 | 155 | 16 | 274 |
| 55.0 | ⊗ | 8.12 | 20 | 50 | 133 | 40 | 50 | 155 | 16 | 274 |
| 60.0 | ⊗ | 8.85 | 20 | 50 | 133 | 40 | 50 | 155 | 16 | 274 |

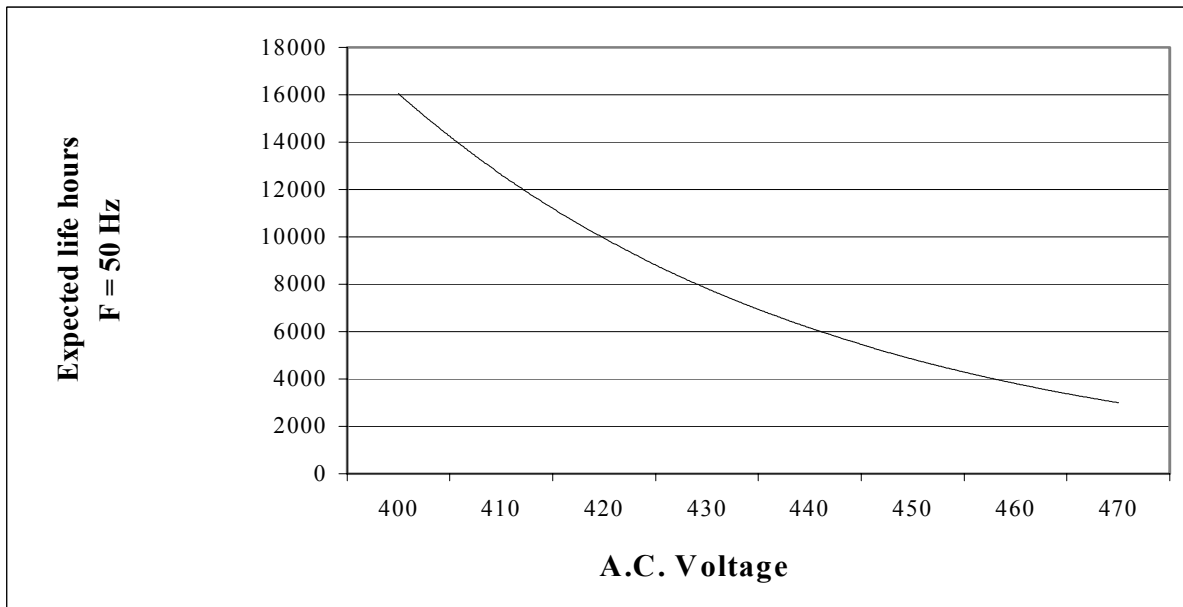
⊗ Capacitor produced according EN60252 standard with Arcotronics self-certification



TYPICAL APPLICATION: the capacitor is used in series to the start-winding of the single-phase electric motor, allowing its starting and increasing the torque during work. Main application fields: low power electric motors, compressors. The choice of the capacitor depends on expected life length and the mechanical connection of the user.

PRODUCT MARKING: TYPE C - EXAMPLE

| | |
|----------------------|---|
| A | C.87.0CF1 MKP |
| | 5 μ F \pm 5 % |
| ARCOTRONICS | |
| 420V~ 10000h/CLASS B | |
| 470V~ 3000h/CLASS C | |
| -25/85/21 | |
| P2 | |
| CE | 5 |
| |  EN 60252 |



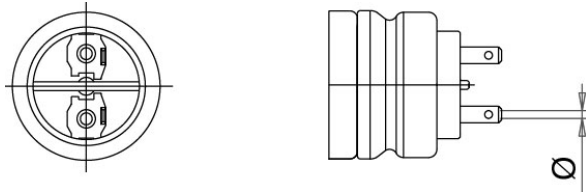
| GENERAL DATA | SIZES TABLES | FAST-ON | BIPOLAR CABLE | DRAWINGS |
|--------------|--------------|---------|---------------|----------|
| 44 | 45 | 46 | 48 | 57 |

General technical data:

| | |
|--|---|
| Reference standards | IEC 252: 1993 EN 60252: 1994 |
| EN60252 approval | VDE Testing and Certification Institute |
| UL810 Recognised Component Mark | Approved up 500 Vac (diameter \geq 30 mm) Standard Marking: 250 Vac 60 Hz. -25/+70 °C. Please contact us for other kind of marking |
| Great Wall Approval (China) | Approved |
| CSA CAN/CSA – C22.2 n.14-95 CSA Std. C22.2 No 190 - M1985 | Vac max 600V – Diameters 50 – 55 - 60 mm Vac max 240V – Diameters 30 – 35 – 40 – 45 mm |
| Operating class: | CLASS B - 10.000 H , 420 Volt a.c. CLASS C - 3.000 H , 470 Volt a.c. |
| Type of working: | Continuous |
| Operating Min. / Max Temperature: | - 25 / 85 °C |
| Storage: | - 40 / 90 °C |
| Rated Voltage Vn (a.c.): | 500 Volt a.c. |
| Rated Frequency (Hz) | 50 - 60 Hz |
| Voltage rise/fall time (max): | 15 Volt / μ s |
| Maximum Permissible Voltage: | 1.10 x Rated Voltage |
| Maximum Permissible Current: | 1.30 x Rated Current |
| Dissipation factor Tg δ : | 20 x 10 ⁻⁴ at 20°C, 50 Hz |
| Safety class: | P2 |
| Maximum altitude: | 2000 m |
| Capacitance tolerance (standard): | \pm 5 % |
| Mounting: | Any position |
| Case: | Aluminium |
| Disk: | Thermoplastic polymer V2 (UL94) |
| Filling resin: | Polyurethane |
| Dielectric: | Polypropylene |
| Plates: | Self-healing metal layer |
| Voltage Test Terminal to terminal: | 2 Vn for 2 s |
| Voltage Test Terminal to case: | 2000 Volt for 2 s |
| Leakage – Clearance in air between parts under voltage: | \geq 5mm |
| Leakage – Clearance in air between parts under voltage and accessible metal parts: | \geq 6mm |
| Max Tightening torque: | 5 Nm (M8) – 10 Nm (M12) |

| Rated Cap. μF | Rated Current A | Max dv/dt V/μs | FAST-ON | | | BIPOLAR CABLE | | | Weight g |
|------------------|--------------------|-------------------|----------------|--------------|--------------|----------------|--------------|--------------|-------------|
| | | | Diameter mm | Height mm | Pack. pcs | Diameter mm | Height mm | Pack. pcs | |
| 1.0 | 0.15 | 15 | 30 | 48 | 115 | 30 | 70 | 36 | 36 |
| 1.5 | 0.22 | 15 | 30 | 48 | 115 | 30 | 70 | 36 | 36 |
| 2.0 | 0.29 | 15 | 30 | 48 | 115 | 30 | 70 | 36 | 36 |
| 2.5 | 0.37 | 15 | 30 | 48 | 115 | 30 | 70 | 36 | 36 |
| 3.0 | 0.44 | 15 | 30 | 48 | 115 | 30 | 70 | 36 | 36 |
| 3,15 | 0.47 | 15 | 30 | 48 | 115 | 30 | 70 | 36 | 36 |
| 3.5 | 0.52 | 15 | 30 | 48 | 115 | 30 | 70 | 36 | 36 |
| 4.0 | 0.59 | 15 | 30 | 48 | 115 | 30 | 70 | 36 | 36 |
| 4.5 | 0.66 | 15 | 30 | 48 | 115 | 30 | 70 | 36 | 36 |
| 5.0 | 0.74 | 15 | 35 | 48 | 86 | 35 | 70 | 36 | 49 |
| 6.0 | 0.88 | 15 | 35 | 48 | 86 | 35 | 70 | 36 | 49 |
| 7.0 | 1.03 | 15 | 35 | 48 | 86 | 35 | 70 | 36 | 49 |
| 8.0 | 1.18 | 15 | 30 | 78 | 115 | 30 | 100 | 36 | 58 |
| 10.0 | 1.47 | 15 | 30 | 78 | 115 | 30 | 100 | 36 | 58 |
| 12.0 | 1.77 | 15 | 35 | 78 | 86 | 35 | 100 | 36 | 79 |
| 12.5 | 1.84 | 15 | 35 | 78 | 86 | 35 | 100 | 36 | 79 |
| 14.0 | 2.07 | 15 | 35 | 78 | 86 | 35 | 100 | 36 | 79 |
| 16.0 | 2.36 | 15 | 35 | 78 | 86 | 35 | 100 | 36 | 79 |
| 18.0 | 2.66 | 15 | 40 | 78 | 62 | 40 | 100 | 25 | 103 |
| 20.0 | 2.95 | 15 | 40 | 78 | 62 | 40 | 100 | 25 | 103 |
| 22.0 | 3.25 | 15 | 40 | 78 | 62 | 40 | 100 | 25 | 103 |
| 25.0 | 3.69 | 15 | 45 | 78 | 50 | 45 | 100 | 25 | 130 |
| 30.0 | 4.43 | 15 | 45 | 78 | 50 | 45 | 100 | 25 | 130 |
| 31.5 | 4.65 | 15 | 45 | 98 | 50 | 45 | 100 | 25 | 165 |
| 35.0 | 5.16 | 15 | 45 | 98 | 50 | 45 | 120 | 25 | 165 |
| 40.0 | 5.90 | 15 | 45 | 98 | 50 | 45 | 120 | 25 | 165 |
| 45.0 | 6.64 | 15 | 45 | 133 | 50 | 45 | 155 | 25 | 222 |
| 50.0 | 7.38 | 15 | 50 | 133 | 40 | 50 | 155 | 16 | 274 |
| 55.0 | 8.12 | 15 | 50 | 133 | 40 | 50 | 155 | 16 | 274 |
| 60.0 | 8.85 | 15 | 50 | 133 | 40 | 50 | 155 | 16 | 274 |
| 65.0 | 9.60 | 15 | 55 | 133 | 32 | 55 | 155 | 16 | 332 |
| 70.0 | 10.30 | 15 | 55 | 133 | 32 | 55 | 155 | 16 | 332 |
| 75.0 | 11.00 | 15 | 60 | 133 | 28 | 60 | 155 | 16 | 395 |
| 80.0 | 11.80 | 15 | 60 | 133 | 28 | 60 | 155 | 16 | 395 |

C.87. SERIES Fast-on 2.8mm with Hole

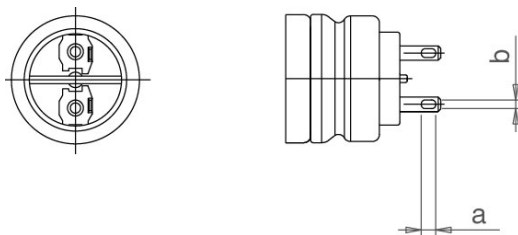


| TYPE OF TERMINAL | FAST-ON 2.8 WITH HOLE |
|-------------------|-------------------------------|
| Execution: | Standard |
| Protection degree | IP00 |
| Wire material | Steel tinned by electrolysis |
| Length | 2.8 mm |
| Thickness | 0.8 mm |
| Diameter hole | 1.3 |
| Standard | DIN46244 |
| Bolt M8 | To diameter (ϕ) 45mm included |
| Bolt M12 | Over diameter (ϕ) 45mm |

| | | | | | | | | | | | | | | | |
|---------------------------------|---|---|---|---|---|---|---|---|---|---|---|---|---|---|---|
| Metal bolt execution (ϕ) ≤ 45mm | C | 8 | 7 | - | - | F | 1 | - | - | - | - | A | A | - | - |
| Metal bolt execution (ϕ) > 45mm | C | 8 | 7 | - | - | G | 1 | - | - | - | - | A | A | - | - |

| | | | | | | | | | | | | | | | |
|-----------------|---|---|---|---|---|---|---|---|---|---|---|---|---|---|---|
| Basic execution | C | 8 | 7 | - | - | E | 1 | - | - | - | - | A | A | - | - |
|-----------------|---|---|---|---|---|---|---|---|---|---|---|---|---|---|---|

C.87. SERIES Fast-on 2.8 mm with Slot

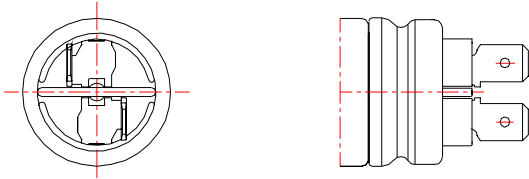


| TYPE OF TERMINAL | FAST ON 2.8 WITH SLOT (SOLDERING TERMINAL) |
|-------------------|--|
| Execution: | On request |
| Protection degree | IP00 |
| Wire material | Steel tinned by electrolysis |
| Length | 2.8 mm |
| Thickness | 0.8 mm |
| Slot a x b | 2.8 x 1.7 |
| Standard | DIN46244 |
| Bolt M8 | To diameter (ϕ) 45mm included |
| Bolt M12 | Over diameter (ϕ) 45mm |

| | | | | | | | | | | | | | | | |
|---------------------------------|---|---|---|---|---|---|---|---|---|---|---|---|---|---|---|
| Metal bolt execution (ϕ) ≤ 45mm | C | 8 | 7 | - | - | F | 4 | - | - | - | - | A | A | - | - |
| Metal bolt execution (ϕ) > 45mm | C | 8 | 7 | - | - | G | 4 | - | - | - | - | A | A | - | - |

| | | | | | | | | | | | | | | | |
|-----------------|---|---|---|---|---|---|---|---|---|---|---|---|---|---|---|
| Basic execution | C | 8 | 7 | - | - | E | 4 | - | - | - | - | A | A | - | - |
|-----------------|---|---|---|---|---|---|---|---|---|---|---|---|---|---|---|

C.87. SERIES Single Fast-on 6.3 mm

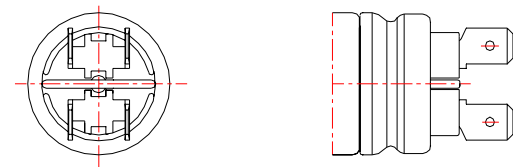


| TYPE OF TERMINAL | FAST-ON 6.3 (SINGLE) |
|-------------------|--------------------------------------|
| Execution: | Standard |
| Protection degree | IP00 |
| Wire material | Steel tinned by electricity |
| Terminal | Fast-on |
| Length | 6.3 mm |
| Thickness | 0.8 mm |
| Standard | DIN46244 |
| Bolt M8 | To diameter (ϕ) 45mm included |
| Bolt M12 | Over diameter (ϕ) 45mm |

| | | | | | | | | | | | | | | | |
|---|---|---|---|---|---|----------|----------|---|---|---|---|---|---|---|---|
| Metal bolt execution (ϕ) \leq 45mm | C | 8 | 7 | - | - | F | 2 | - | - | - | - | A | A | - | - |
| Metal bolt execution (ϕ) $>$ 45mm | C | 8 | 7 | - | - | G | 2 | - | - | - | - | A | A | - | - |

| | | | | | | | | | | | | | | | |
|-----------------|---|---|---|---|---|----------|----------|---|---|---|---|---|---|---|---|
| Basic execution | C | 8 | 7 | - | - | E | 2 | - | - | - | - | A | A | - | - |
|-----------------|---|---|---|---|---|----------|----------|---|---|---|---|---|---|---|---|

C.87. SERIES Double Fast-on 6.3 mm

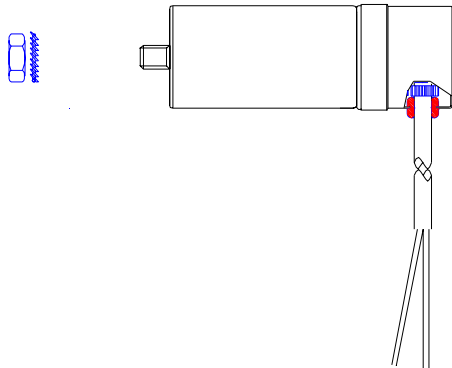


| TYPE OF TERMINAL | FAST ON 6.3 (DOUBLE) |
|-------------------|--------------------------------------|
| Execution: | Standard |
| Protection degree | IP00 |
| Wire material | Steel tinned by electricity |
| Terminal | Fast on |
| Length | 6.3 mm |
| Thickness | 0.8 mm |
| Standard | DIN46244 |
| Bolt M8 | To diameter (ϕ) 45mm included |
| Bolt M12 | Over diameter (ϕ) 45mm |

| | | | | | | | | | | | | | | | |
|---|---|---|---|---|---|----------|----------|---|---|---|---|---|---|---|---|
| Metal bolt execution (ϕ) \leq 45mm | C | 8 | 7 | - | - | F | 3 | - | - | - | - | A | A | - | - |
| Metal bolt execution (ϕ) $>$ 45mm | C | 8 | 7 | - | - | G | 3 | - | - | - | - | A | A | - | - |

| | | | | | | | | | | | | | | | |
|-----------------|---|---|---|---|---|----------|----------|---|---|---|---|---|---|---|---|
| Basic execution | C | 8 | 7 | - | - | E | 3 | - | - | - | - | A | A | - | - |
|-----------------|---|---|---|---|---|----------|----------|---|---|---|---|---|---|---|---|

C.87. SERIES Bipolar Cable Standard



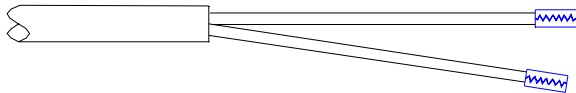
| | |
|-----------------------|--|
| TYPE | FLEXIBLE BIPOLAR CABLE FOR HIGH TEMPERATURE |
| Execution: | Standard |
| Protection degree | IP55 |
| Cable | PVC (Polyvinyl chloride) |
| Designation | H05V2V2-F |
| Standard | CEI 20 – 20 |
| Operating temperature | 90 °C |
| Conductor | Flexible soft copper wire |
| Insulating | Polyvinyl chloride TI3 |
| Sleeve | Polyvinyl chloride TM3 |
| Conductor colour | Blue / Brown |
| Cable unsheathing | 40 mm |
| Cable stripping | 8 mm |
| Finishing | Tinning |
| Bolt M8 (F) | To diameter (φ) 45mm included |
| Bolt M12 (G) | Over diameter (φ) 45mm |

| | | | | | | | | | | | | | | | |
|----------------------|---|---|---|---|---|-----|---|---|---|---|---|---|---|---|---|
| Metal bolt execution | C | 8 | 7 | - | - | F/G | | - | - | - | - | | | - | - |
| Total length | | | | | | | | | | | | | | | |
| L = 150 mm | | | | | | F/G | F | | | | | L | D | | |
| L = 150 mm | | | | | | F/G | F | | | | | L | E | | |
| L = 250 mm | | | | | | F/G | F | | | | | L | F | | |
| L = 300 mm | | | | | | F/G | F | | | | | L | G | | |
| L = 350 mm | | | | | | F/G | F | | | | | L | H | | |
| L = 400 mm | | | | | | F/G | F | | | | | L | I | | |

| | | | | | | | | | | | | | | | |
|-------------------------|---|---|---|---|---|---|---|---|---|---|---|---|---|---|---|
| No metal bolt execution | C | 8 | 7 | - | - | E | | - | - | - | - | | | - | - |
| Total length | | | | | | | | | | | | | | | |
| L = 150 mm | | | | | | E | F | | | | | L | D | | |
| L = 150 mm | | | | | | E | F | | | | | L | E | | |
| L = 250 mm | | | | | | E | F | | | | | L | F | | |
| L = 300 mm | | | | | | E | F | | | | | L | G | | |
| L = 350 mm | | | | | | E | F | | | | | L | H | | |
| L = 400 mm | | | | | | E | F | | | | | L | I | | |

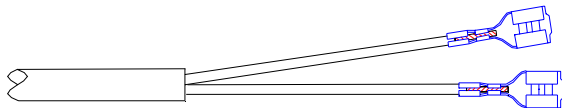
Special Executions. For applications requiring a specific termination, KEMET can supply a full range of capacitors with a bipolar cable provided with terminals. The material used (Brass – Cu Zn) provided with tinning (Gal Sn) defines connection quality and reliability also in case of high temperatures (155°C).

C.87. SERIES Bipolar Cable Pin Terminals



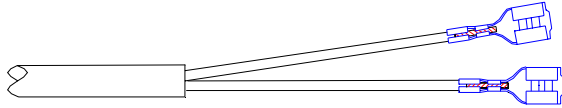
| TYPE | BIPOLAR CABLE WITH PIN TERMINAL | | | | | | | | | | | | | |
|---|---------------------------------|---|---|---|---|---|---|---|---|---|---|---|---|---|
| Execution: | Special | | | | | | | | | | | | | |
| Point material | Cu Zn gal Sn | | | | | | | | | | | | | |
| Material thickness | 0.25 mm | | | | | | | | | | | | | |
| Terminal length | 7 mm | | | | | | | | | | | | | |
| Standard version S = 300mm | | | | | | | | | | | | | | |
| Metal bolt execution (ϕ) \leq 45mm | C | 8 | 7 | - | - | F | J | - | - | - | - | - | - | - |
| Metal bolt execution (ϕ) $>$ 45mm | C | 8 | 7 | - | - | G | J | - | - | - | - | - | - | - |
| Basic execution | C | 8 | 7 | - | - | E | J | - | - | - | - | - | - | - |

C.87. SERIES Bipolar Cable Straight Fast-on 6.3 mm



| TYPE | BIPOLAR CABLE WITH STRAIGHT FAST-ON 6.3 | | | | | | | | | | | | | |
|---|---|---|---|---|---|---|---|---|---|---|---|---|---|---|
| Execution: | Special | | | | | | | | | | | | | |
| Fast – on material | Cu Zn gal Sn | | | | | | | | | | | | | |
| Material thickness | 0.42 mm | | | | | | | | | | | | | |
| Terminal length | 19.3 mm | | | | | | | | | | | | | |
| Standard version S = 300mm | | | | | | | | | | | | | | |
| Metal bolt execution (ϕ) \leq 45mm | C | 8 | 7 | - | - | F | H | - | - | - | - | - | - | - |
| Metal bolt execution (ϕ) $>$ 45mm | C | 8 | 7 | - | - | G | H | - | - | - | - | - | - | - |
| Basic execution | C | 8 | 7 | - | - | E | H | - | - | - | - | - | - | - |

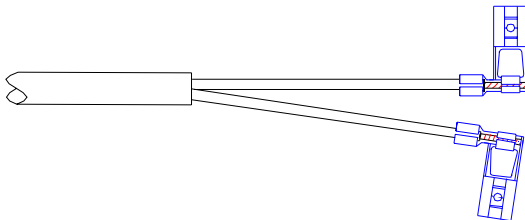
C.87. SERIES Bipolar Cable Straight Female Fast-on 4.8 mm



| | | | | | | | | | | | | | |
|--------------------|---|--|--|--|--|--|--|--|--|--|--|--|--|
| TYPE | BIPOLAR CABLE WITH STRAIGHT FEMALE FAST-ON 4.8 | | | | | | | | | | | | |
| Execution: | Special | | | | | | | | | | | | |
| Fast-on material | Cu Zn gal Sn | | | | | | | | | | | | |
| Material thickness | 0.35 mm | | | | | | | | | | | | |
| Terminal length | 15.6 mm | | | | | | | | | | | | |

| | | | | | | | | | | | | | | |
|---|---|---|---|---|---|---|---|---|---|---|---|---|---|---|
| Standard version S = 300mm | | | | | | | | | | | | | | |
| Metal bolt execution (ϕ) \leq 45mm | C | 8 | 7 | - | - | F | G | - | - | - | - | - | - | - |
| Metal bolt execution (ϕ) $>$ 45mm | C | 8 | 7 | - | - | G | G | - | - | - | - | - | - | - |
| Basic execution | C | 8 | 7 | - | - | E | G | - | - | - | - | - | - | - |

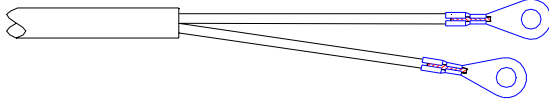
C.87. SERIES Bipolar Cable Flag Female Fast-on 4.8 mm



| | | | | | | | | | | | | | |
|--------------------|---|--|--|--|--|--|--|--|--|--|--|--|--|
| TYPE | BIPOLAR CABLE WITH FEMALE FLAG FAST-ON 4.8 | | | | | | | | | | | | |
| Execution: | Special | | | | | | | | | | | | |
| Fast-on material | Cu Zn gal Sn | | | | | | | | | | | | |
| Material thickness | 0.35 mm | | | | | | | | | | | | |
| Terminal length | 12.5 mm | | | | | | | | | | | | |

| | | | | | | | | | | | | | | |
|---|---|---|---|---|---|---|---|---|---|---|---|---|---|---|
| Standard version S = 300mm | | | | | | | | | | | | | | |
| Metal bolt execution (ϕ) \leq 45mm | C | 8 | 7 | - | - | F | L | - | - | - | - | - | - | - |
| Metal bolt execution (ϕ) $>$ 45mm | C | 8 | 7 | - | - | G | L | - | - | - | - | - | - | - |
| Basic execution | C | 8 | 7 | - | - | E | L | - | - | - | - | - | - | - |

C.87. SERIES Bipolar Cable Ring Terminal M4



| | |
|--------------------|--|
| TYPE | BIPOLAR CABLE WITH RING TERMINAL M4 |
| Execution: | Special |
| Terminal material | Cu Zn gal Sn |
| Material thickness | 0.40 mm |
| Ring diameter | 4 mm |

| | | | | | | | | | | | | | | | |
|---|---|---|---|---|---|----------|----------|---|---|---|---|---|---|---|---|
| Standard version S = 300mm | | | | | | | | | | | | | | | |
| Metal bolt execution (ϕ) \leq 45mm | C | 8 | 7 | - | - | F | I | - | - | - | - | A | A | - | - |
| Metal bolt execution (ϕ) $>$ 45mm | C | 8 | 7 | - | - | G | I | - | - | - | - | A | A | - | - |
| Basic execution | C | 8 | 7 | - | - | E | I | - | - | - | - | A | A | - | - |

C.87 SERIES – OPTIONS

| Rated Cap. μF | C.87/8 | | | | C.87/0 | | | |
|----------------------|---------------------|----------------|-----------|----------------|---------------------|----------------|-----------|----------------|
| | Standard dimensions | | Options | | Standard dimensions | | Options | |
| | DxH mm | Package pcs | DxH mm | Package pcs | DxH mm | Package pcs | DxH mm | Package pcs |
| 1.0 | 30x48 | 115 | 25x48 | 162 | 30x48 | 115 | 25x48 | 162 |
| 1.5 | 30x48 | 115 | 25x48 | 162 | 30x48 | 115 | 25x48 | 162 |
| 2.0 | 30x48 | 115 | 25x48 | 162 | 30x48 | 115 | 25x48 | 162 |
| 2.5 | 30x48 | 115 | 25x48 | 162 | 30x48 | 115 | 25x48 | 162 |
| 3.0 | 30x48 | 115 | 25x48 | 162 | 30x48 | 115 | 25x60 | 162 |
| 3.15 | 30x48 | 115 | | | 30x48 | 115 | | |
| 3.5 | 35x48 | 86 | 30x60 | 115 | 30x48 | 115 | 25x60 | 162 |
| 4.0 | 35x48 | 86 | 30x60 | 115 | 30x48 | 115 | 25x60 | 162 |
| 4.5 | 35x48 | 86 | 30x60 | 115 | 30x48 | 115 | 25x78 | 162 |
| 5.0 | 35x48 | 86 | 30x60 | 115 | 35x48 | 86 | 25x78 | 162 |
| 6.0 | 30x78 | 115 | 35x60 | 86 | 35x48 | 86 | 25x78 | 162 |
| 7.0 | 30x78 | 115 | 35x60 | 86 | 35x48 | 86 | 30x78 | 115 |
| 8.0 | 30x78 | 115 | 35x60 | 86 | 30x78 | 115 | 35x60 | 86 |
| 10.0 | 35x78 | 86 | | | 30x78 | 115 | 35x60 | 86 |
| 12.0 | 35x78 | 86 | | | 35x78 | 86 | | |
| 12.5 | 35x78 | 86 | | | 35x78 | 86 | | |
| 14.0 | 40x78 | 62 | 35x98 | 86 | 35x78 | 86 | | |
| 16.0 | 40x78 | 62 | 35x98 | 86 | 35x78 | 86 | | |
| 18.0 | 45x78 | 50 | 40x98 | 62 | 40x78 | 62 | | |
| 20.0 | 45x78 | 50 | 40x98 | 62 | 40x78 | 62 | | |
| 22.0 | 45x78 | 50 | 40x98 | 62 | 40x78 | 62 | | |
| 25.0 | 45x98 | 50 | | | 45x78 | 50 | 40x98 | 62 |
| 30.0 | 45x98 | 50 | | | 45x78 | 50 | 40x98 | 62 |
| 31.5 | 45x133 | 50 | | | 45x98 | 50 | | |
| 35.0 | 45x133 | 50 | 50x98 | 40 | 45x98 | 50 | | |
| 36.0 | 45x133 | 50 | 50x98 | 40 | 45x98 | 50 | | |
| 40.0 | 45x133 | 50 | | 40 | 45x98 | 50 | | |
| 45.0 | 50x133 | 40 | 55x98 | 32 | 45x133 | 50 | 55x98 | 32 |
| 50.0 | 50x133 | 40 | 60x98 | 28 | 50x133 | 40 | 60x98 | 28 |
| 55.0 | 50x133 | 40 | 60x98 | 28 | 50x133 | 40 | 60x98 | 28 |
| 60.0 | 50x133 | 40 | 60x98 | 28 | 50x133 | 40 | 60x98 | 28 |
| 65.0 | | | | | 55x133 | 32 | | |
| 70.0 | | | | | 55x133 | 32 | | |
| 75.0 | | | | | 60x133 | 28 | | |
| 80.0 | | | | | 60x133 | 28 | | |