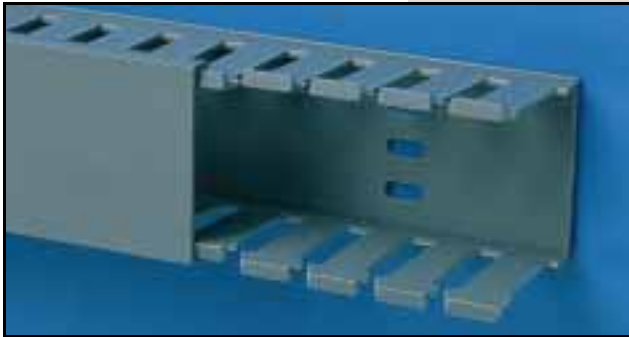



PANDUCT® Type E — Slotted Wall Wiring Duct



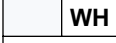




Type E Slotted Wall Wiring Duct

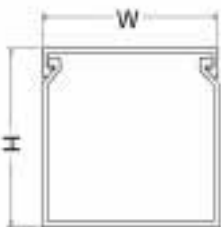
- Made of rigid PVC (See [pg. 34](#) for material specifications)
- Rated for continuous use temperatures up to 50°C (122°F)
- Available in a variety of colors as a standard part (See [page 36](#) for details)
- Provided with standard mounting holes (dimensions [page 31](#))
- Available without mounting holes (See ordering information below)
- Available with adhesive backing* (See [page 22](#) for details)



Type E— Wiring Duct Standard Colors†:

 LG	 DG	 WH
Light Gray	Dark Gray	White
 BL	 IB	
Black	Intrinsic Blue	

Colors shown are approximate.



Duct Part Number	Duct External Dimensions		Cover Part Number	Duct Std. Ctn. Qty.	Cover Std. Ctn. Qty.	Std. Lgth
	WxH IN.	WxH (mm)				
E.5X.5LG6 E.5X.62LG6 E.5X1LG6 E.5X1.25LG6 E.5X1.75LG6 E.5X2LG6	0.63 x 0.56 0.63 x 0.68 0.63 x 1.06 0.63 x 1.31 0.63 x 1.81 0.63 x 2.06	(16.0) x (14.2) (16.0) x (17.3) (16.0) x (26.9) (16.0) x (33.3) (16.0) x (46.0) (16.0) x (52.3)	C.5LG6	120 ft. 120 ft. 120 ft. 120 ft. 120 ft. 120 ft.	120 ft. 120 ft. 120 ft. 120 ft. 120 ft. 120 ft.	6 ft.
E.75X.75LG6 E.75X1LG6 E.75X1.5LG6 E.75X2LG6	0.88 x 0.81 0.88 x 1.06 0.88 x 1.56 0.88 x 2.12	(22.4) x (20.6) (22.4) x (26.9) (22.4) x (39.6) (22.4) x (53.8)	C.75LG6	120 ft. 120 ft. 120 ft. 120 ft.	120 ft. 120 ft. 120 ft. 120 ft.	6 ft.
E1X1LG6 E1X1.25LG6 E1X1.5LG6 E1X2LG6 E1X2.5LG6 E1X3LG6 E1X4LG6	1.14 x 1.12 1.14 x 1.37 1.14 x 1.62 1.14 x 2.12 1.14 x 2.62 1.14 x 3.12 1.14 x 4.12	(29.0) x (28.4) (29.0) x (34.8) (29.0) x (41.1) (29.0) x (53.8) (29.0) x (66.5) (29.0) x (79.2) (29.0) x (104.6)	C1LG6	120 ft. 120 ft. 120 ft. 120 ft. 120 ft. 120 ft. 120 ft.	120 ft. 120 ft. 120 ft. 120 ft. 120 ft. 120 ft. 120 ft.	6 ft.
E1.5X1 LG6 E1.5X1.5LG6 E1.5X2LG6 E1.5X3LG6 E1.5X4LG6	1.64 x 1.12 1.64 x 1.62 1.64 x 2.12 1.64 x 3.12 1.64 x 4.12	(41.7) x (28.4) (41.7) x (41.1) (41.7) x (53.8) (41.7) x (79.2) (41.7) x (104.6)	C1.5LG6	120 ft. 120 ft. 120 ft. 120 ft. 60 ft.	120 ft. 120 ft. 120 ft. 120 ft. 120 ft.	6 ft.
E2X1LG6 E2X1.5LG6 E2X2LG6 E2X2.5LG6 E2X3LG6 E2X4LG6 E2X5LG6	2.14 x 1.12 2.14 x 1.62 2.14 x 2.12 2.14 x 2.62 2.14 x 3.12 2.14 x 4.12 2.14 x 5.12	(54.4) x (28.4) (54.4) x (41.1) (54.4) x (53.8) (54.4) x (66.5) (54.4) x (79.2) (54.4) x (104.6) (54.4) x (130.0)	C2LG6	120 ft. 120 ft. 120 ft. 60 ft. 60 ft. 60 ft. 60 ft.	120 ft. 120 ft. 120 ft. 120 ft. 120 ft. 120 ft. 120 ft.	6 ft.
E2.5X3LG6	2.64 x 3.12	(67.1) x (79.2)	C2.5LG6	60 ft.	120 ft.	6 ft.
E3X1LG6 E3X1.25LG6 E3X2LG6 E3X3LG6 E3X4LG6 E3X5LG6	3.14 x 1.12 3.14 x 1.37 3.14 x 2.12 3.14 x 3.12 3.14 x 4.12 3.14 x 5.12	(79.8) x (28.4) (79.8) x (34.8) (79.8) x (53.8) (79.8) x (79.2) (79.8) x (104.6) (79.8) x (130.0)	C3LG6	120 ft. 120 ft. 60 ft. 60 ft. 60 ft. 60 ft.	120 ft. 120 ft. 120 ft. 120 ft. 120 ft. 120 ft.	6 ft.
E4X1.5LG6 E4X2LG6 E4X3LG6 E4X4LG6 E4X5LG6	4.14 x 1.62 4.14 x 2.12 4.14 x 3.12 4.14 x 4.12 4.14 x 5.12	(105.2) x (41.1) (105.2) x (53.8) (105.2) x (79.2) (105.2) x (104.6) (105.2) x (130.0)	C4LG6	120 ft. 60 ft. 60 ft. 60 ft. 60 ft.	120 ft. 120 ft. 120 ft. 120 ft. 120 ft.	6 ft.

See [page 31](#) for complete listing of dimensions. *Adhesive tape is not CSA Certified.

Ordering Information:

- Order number of feet required in multiples of 6 ft or Std. Carton quantities.
- To order duct without mounting holes, add NM to Part Number.
- To order with pressure-sensitive adhesive mounting tape applied, add -A to Part Number.
- Part Number shown for Light Gray LG. To order other colors, substitute WH White, DG Dark Gray, BL Black, and IB Intrinsic Blue

†See [page 36](#) to determine which sizes are available in each color

Part Number Nomenclature —

