

**MICRO SWITCH**

A DIVISION OF UNDERWINTERS' LABORATORY COMPANY

FED. MFR. CODE 91929

**SWITCH - BASIC**

CATALOG LISTING

**BZ-RW922-A2****5****M BZ-RW922-A2**

DRAWING NUMBER

ISSUE

X 5

X 5

X 5

REPLACES

RELEASE NO. SR6481

23 JULY 57

CHECK

FT

23 JULY 57

CHECK

X.S.U.

6 MAY 57

CHECK

X.S.U.

26 JULY 57

CHECK

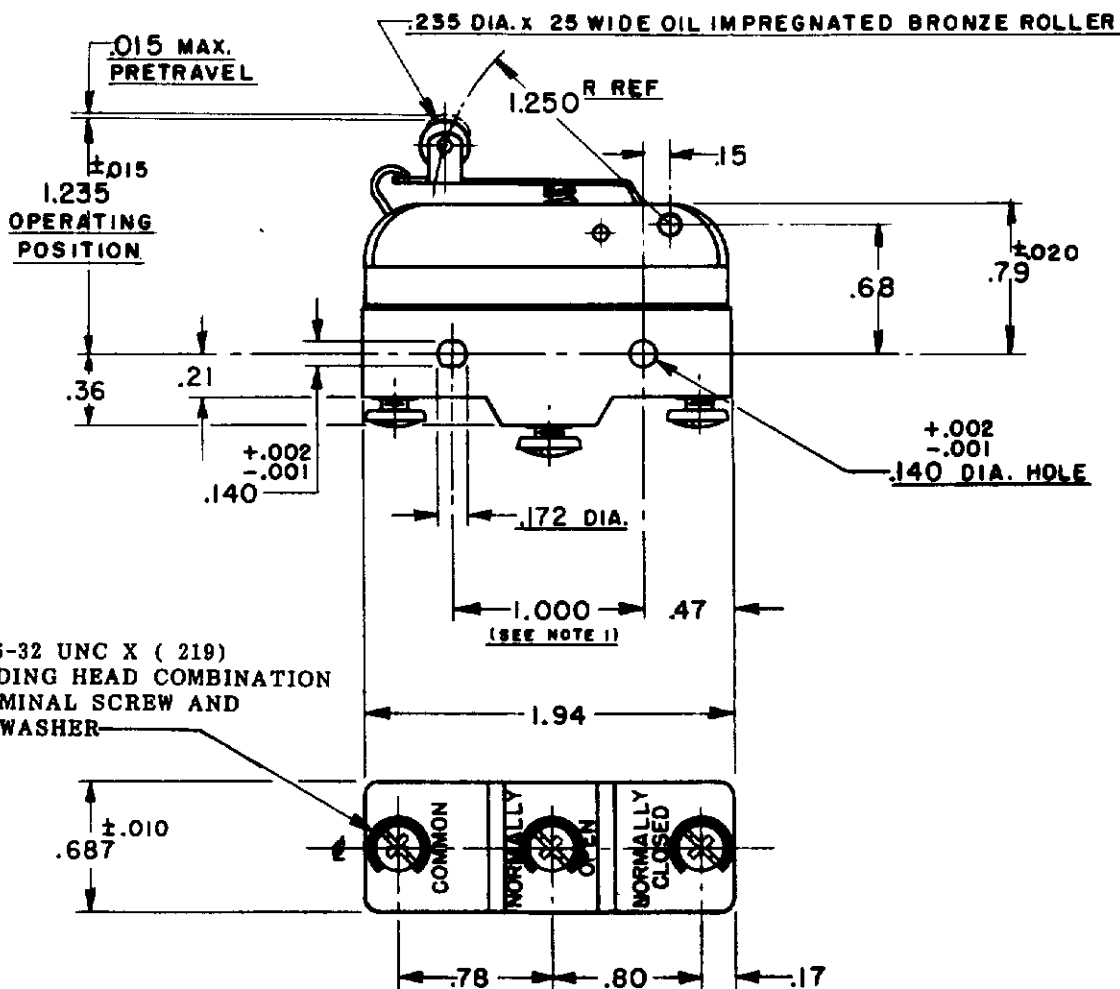
GCH

3 MAY 57

DRAWN

R G C

0-80378



NOTE -

1 - MOUNTING HOLES WILL ACCEPT PINS OR SCREWS OF .139 MAX DIA. ON 1.000 ±.002 CENTERS

2 - PLASTIC PARTS ARE MADE OF MINERAL FILLED PHENOLICS.

THIS DRAWING COVERS A PROPRIETARY ITEM AND IS THE PROPERTY OF MICRO SWITCH, A DIVISION OF HONEYWELL THIS DRAWING IS NOT TO BE COPIED OR USED WITHOUT THE APPROVAL OF MICRO SWITCH.

**CHARACTERISTICS**

OPERATING FORCE ----- 12 OZ. MAX.

RELEASE FORCE ----- 4 OZ. MIN.

DIFFERENTIAL TRAVEL ----- 0005 - .0010

OVERTRAVEL ----- .100 MIN.

**ELECTRICAL DATA**

CONTACT ARRANGEMENT

S. P. D. T.

UNDERWINTERS' LAB. INC. LISTED RATING

10A - 125, 250 OR 480 VAC

1/8HP - 125 VAC; 1/4HP - 250 VAC

**SCALE FULL**

DO NOT SCALE PRINT

UNLESS OTHERWISE SPECIFIED DIMENSIONS ARE IN INCHES

**TOLERANCES ARE:**

ONE PLACE (.0)	±.030
TWO PLACE (.00)	±.015
THREE PLACE (.000)	±.005
ANGLES	±

WEIGHT