

MICRO SWITCH

A DIVISION OF MINNEAPOLIS-HONEYWELL REGULATOR COMPANY
MINNEAPOLIS, MINNESOTA

FED. MFR. CODE 91929

SWITCH-BASIC

CATALOG LISTING

BZ-RW8422-A2

REPLACES X101386-BZ

RELEASE NO. SR-6709

CHECK

CHECK

25, AUG 62

DAW

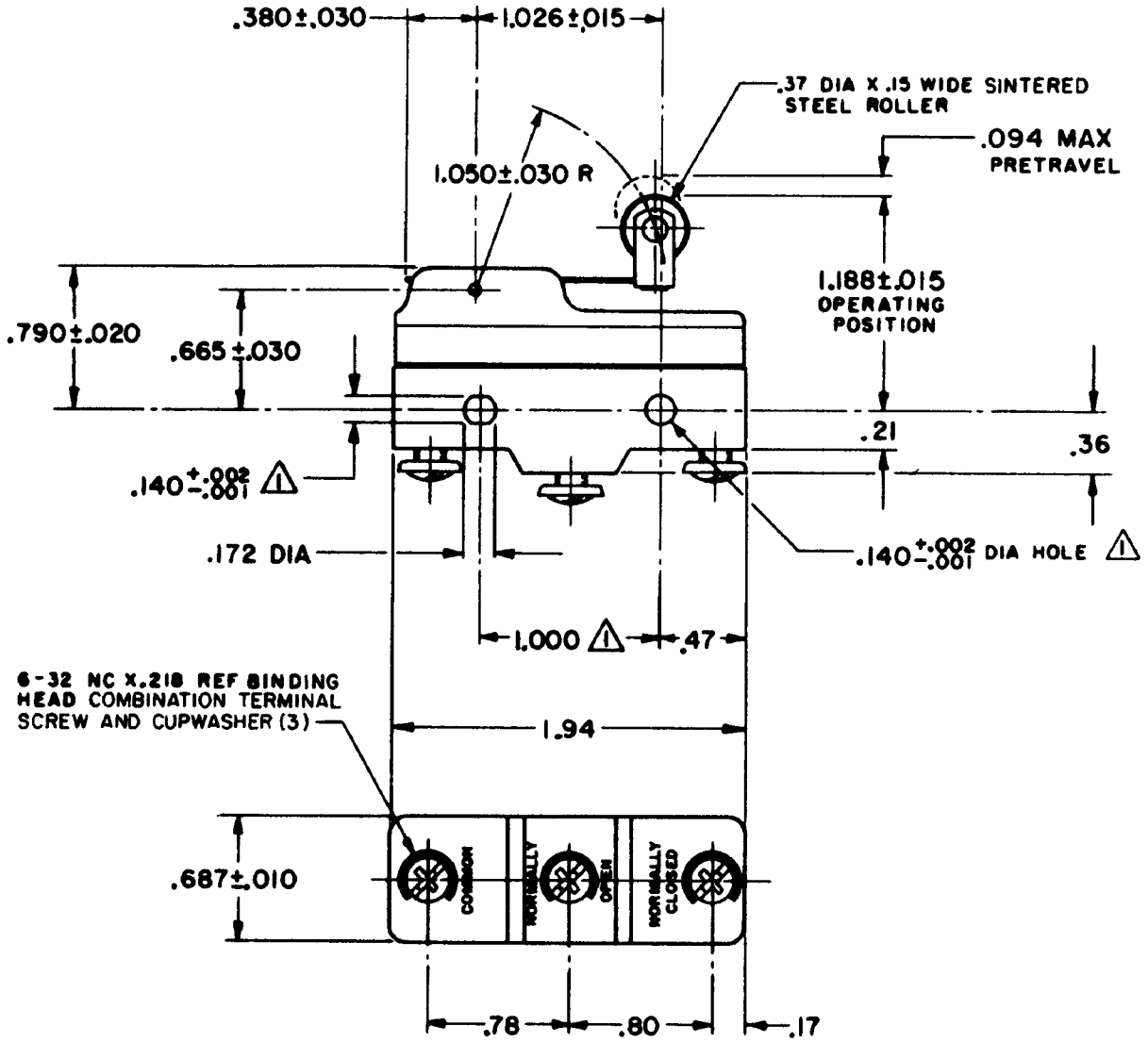
19 JULY 62

DRAWING NUMBER
BZ-RW8422-A2

PAGE 1 OF 1

ISSUE
M
6

REVISIONS	
A	CO 16736 SCH 19 JULY 62
B	D023645 ORD 23 JAN 63
C	LOS D027175 KJA 21 MAY 70
D	RE-INST PR22613 TSM 25 FEB 97
E	CO93986 JJA 3 MAR 99



NOTE -
 MOUNTING HOLES WILL ACCEPT PINS OR SCREWS OF .139 MAX DIA ON 1.000 ± .002 CENTERS

THIS DRAWING COVERS A PROPRIETARY ITEM AND IS THE PROPERTY OF MICRO SWITCH, A DIVISION OF MINNEAPOLIS-HONEYWELL REGULATOR CO. THIS DRAWING IS NOT TO BE COPIED OR USED WITHOUT THE APPROVAL OF MICRO SWITCH.

CHARACTERISTICS	ELECTRICAL DATA	SCALE FULL
OPERATING FORCE ----- 2 OZ MAX	CONTACT ARRANGEMENT S P D T	DO NOT SCALE PRINT
RELEASE FORCE ----- 1/4 OZ MIN	L103 15A 125, 250 OR 480 VAC 1/8HP 125 VAC, 1/4HP 250 VAC	UNLESS OTHERWISE SPECIFIED DIMENSIONS ARE IN INCHES
DIFFERENTIAL TRAVEL ----- .001 - .006	FIG. 288 FIG. 299 FIG. 306	TOLERANCES ARE: ONE PLACE (.0) ± .030 TWO PLACE (.00) ± .015 THREE PLACE (.000) ± .005 ANGLES ±
OVERTRAVEL ----- .094 MIN	16A 250V ~ T85 5E4 	WEIGHT .076 LB

FORMTEK