

MICRO SWITCH

FREERPORT ILLINOIS, U.S.A
A DIVISION OF HONEYWELL
FED. MFG. CODE 91929

SWITCH - BASIC

CATALOG LISTING

BZ-RQ-A2

5

BZ-RQ-A2

M

DRAWING NUMBER

3

ISSUE

36

REPLACES

RELEASE NO. CO-8520

CHECK

REVISIONS

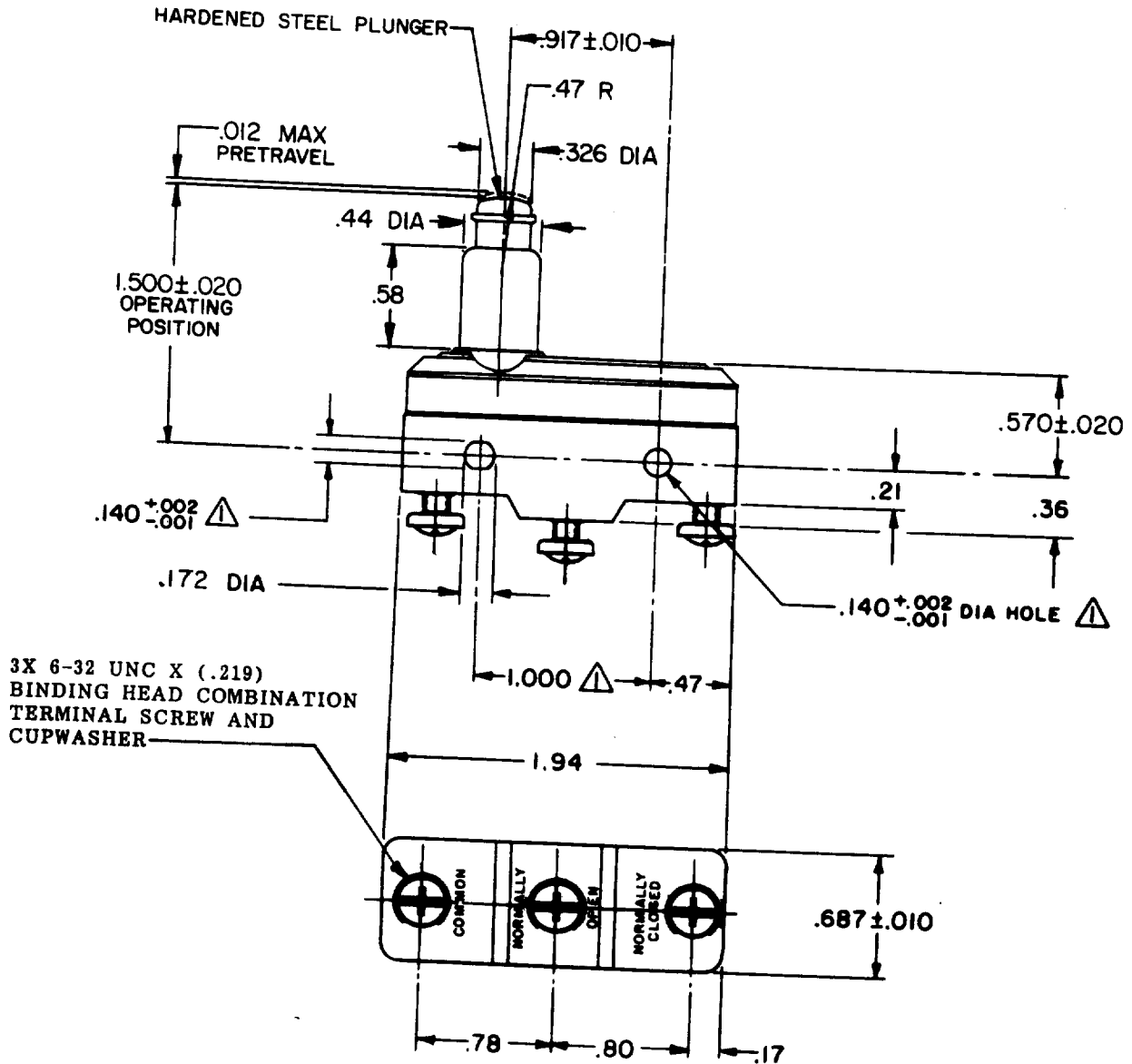
A	NEW DWG	034198
K	P	K
23	SEP	74
A	CO-	75924
K	D	R
8	OCT	93
C	CO-	73287-J
J	A	L
22	NOV	93
D	CO-	77589
J	A	L
30	MAR	94

CHECK

FO-52848-A

DRAWN

K P K 25 SEP 74



3X 6-32 UNC X (.219)
BINDING HEAD COMBINATION
TERMINAL SCREW AND
CUPWASHER

NOTE -
▲ - MOUNTING HOLES WILL ACCEPT PINS OR SCREWS
OF .139 MAX DIA ON 1.000 ± .002 CENTERS

THIS DRAWING COVERS A PROPRIETARY ITEM AND IS THE PROPERTY OF MICRO SWITCH, A DIVISION OF HONEYWELL. THIS DRAWING IS NOT TO BE COPIED OR USED WITHOUT THE APPROVAL OF MICRO SWITCH.

THIRD ANGLE PROJECTION

CHARACTERISTICS

OPERATING FORCE ----- 6-9 1/2 OZ
RELEASE FORCE ----- 4 OZ MIN
DIFFERENTIAL TRAVEL ---- .0002-.0005
OVERTRAVEL ----- .219 MIN

ELECTRICAL DATA

CONTACT ARRANGEMENT
S P D T

UL LISTED - FILE E12252
CODE L103 15A-125, 250 OR 480 VAC
1/8HP-125 VAC; 1/4HP-250 VAC



SCALE FULL

DO NOT SCALE PRINT

TOLERANCES

APPLY TO DESIGN UNITS. CONVERSIONS ARE ONLY FOR REFERENCE. UNLESS NOTED, TOLERANCES ARE ±

	DIM. mm	TOL. mm/in	DIM. in	TOL. mm/in
NO PLACES	X	1/.04	X.X	0.8/.03
ONE PLACE	X.X	0.4/.016	X.XX	0.38/.015
TWO PLACES	X.XX	0.16/.008	X.XXX	0.13/.008
THREE PLACES	X.XXX		X.XXX	
ANGLES				

DESIGN UNITS

SI METRIC

US CUSTOMARY

WEIGHT .086 LB