

MICRO SWITCH

A DIVISION OF MINNEAPOLIS-HONEYWELL REGULATOR COMPANY
MINNEAPOLIS, MINNESOTA

FED. MFR. CODE 91929

SWITCH - BASIC

(M) BZ-7YQITI
ISSUE 7

BZ-7YQITI

M

DRAWING NUMBER

8

12

ISSUE

10

REPLACES

RELEASE NO.

CHECK

CHECK

CHECK

CHECK

CHECK

CHECK

CHECK

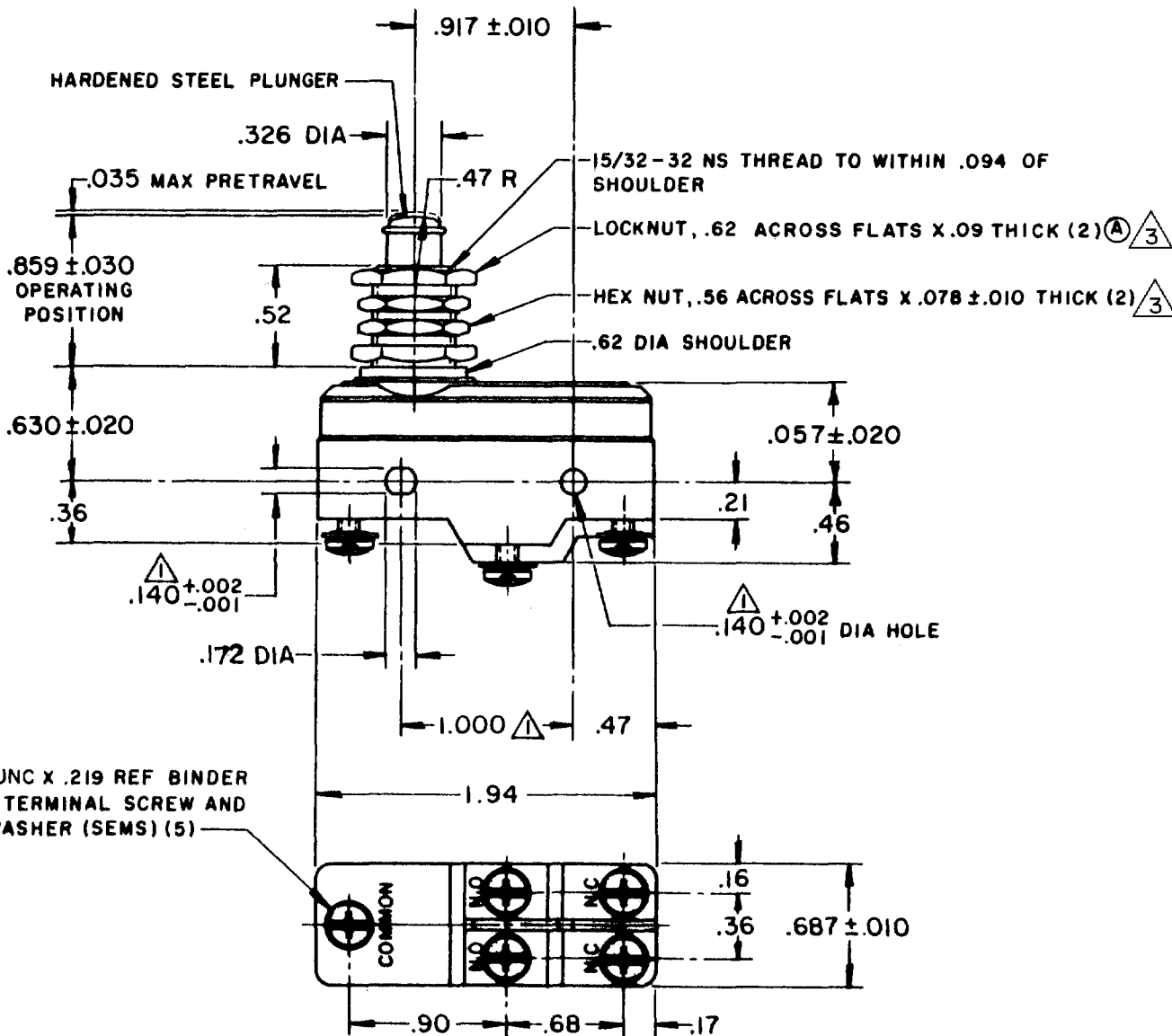
CHECK

CHECK

CHECK

CHECK

CHECK



REVISIONS

A	CO-14866	JID	10 AUG 60
B	CO34304	RER	4 APR 75
C	CO-88351-D	JWB	18 JUL 91
D	CO-77590	SAK	11 JUN 94
E	CO-82133	CSL	24 JUL 96

NOTE -

- (A) MOUNTING HOLES WILL ACCEPT PINS OR SCREWS OF .139 MAX DIA ON 1.000 ±.002 CENTERS
- 2- SWITCH WILL PERFORM SATISFACTORILY IN TEMPERATURES TO MINUS 65° F
- (3) HARDWARE FURNISHED UNASSEMBLED

THIS DRAWING COVERS A PROPRIETARY ITEM AND IS THE PROPERTY OF MICRO SWITCH, A DIVISION OF MINNEAPOLIS-HONEYWELL REGULATOR CO. THIS DRAWING IS NOT TO BE COPIED OR USED WITHOUT THE APPROVAL OF MICRO SWITCH.

CHARACTERISTICS

OPERATING FORCE-----30 OZ MAX
RELEASE FORCE-----4 OZ MIN
DIFFERENTIAL TRAVEL-----.002-.007
OVERTRAVEL-----.219 MIN

ELECTRICAL DATA

CONTACT ARRANGEMENT
SINGLE POLE DOUBLE THROW
SPLIT CONTACT

UNDERWRITERS' LAB. INC. LISTED RATING
-L4- 5 A-250 VAC



SCALE FULL

DO NOT SCALE PRINT

UNLESS OTHERWISE SPECIFIED
DIMENSIONS ARE IN INCHES
TOLERANCES ARE:

ONE PLACE (.0) ±.030
TWO PLACE (.00) ±.018
THREE PLACE (.000) ±.008
ANGLES ±

WEIGHT .080 LB

FORMTEK
FO-50378

JID 10 AUG 60