

MICRO SWITCH

FREEPORT ILLINOIS, U.S.A
A DIVISION OF HONEYWELL
FED. MFG. CODE 91929

SWITCH-BASIC

CATALOG LISTING

BZ-7RW80189-A2

S

M BZ-7RW80189-A2

PAGE 1 OF 1

REPLACES X71601-BZ

RELEASE NO. PR-9411

DRAWING NUMBER

4

ISSUE

REVISIONS

A	CO 73287-E	D H D	8 OCT 88
B	CO 77589	TSM	29 MAR 94
C	C093346	DLT	20 SEP 98

CHECK

CHECK

1 OCT 80

CHECK

1 OCT 80

CHECK

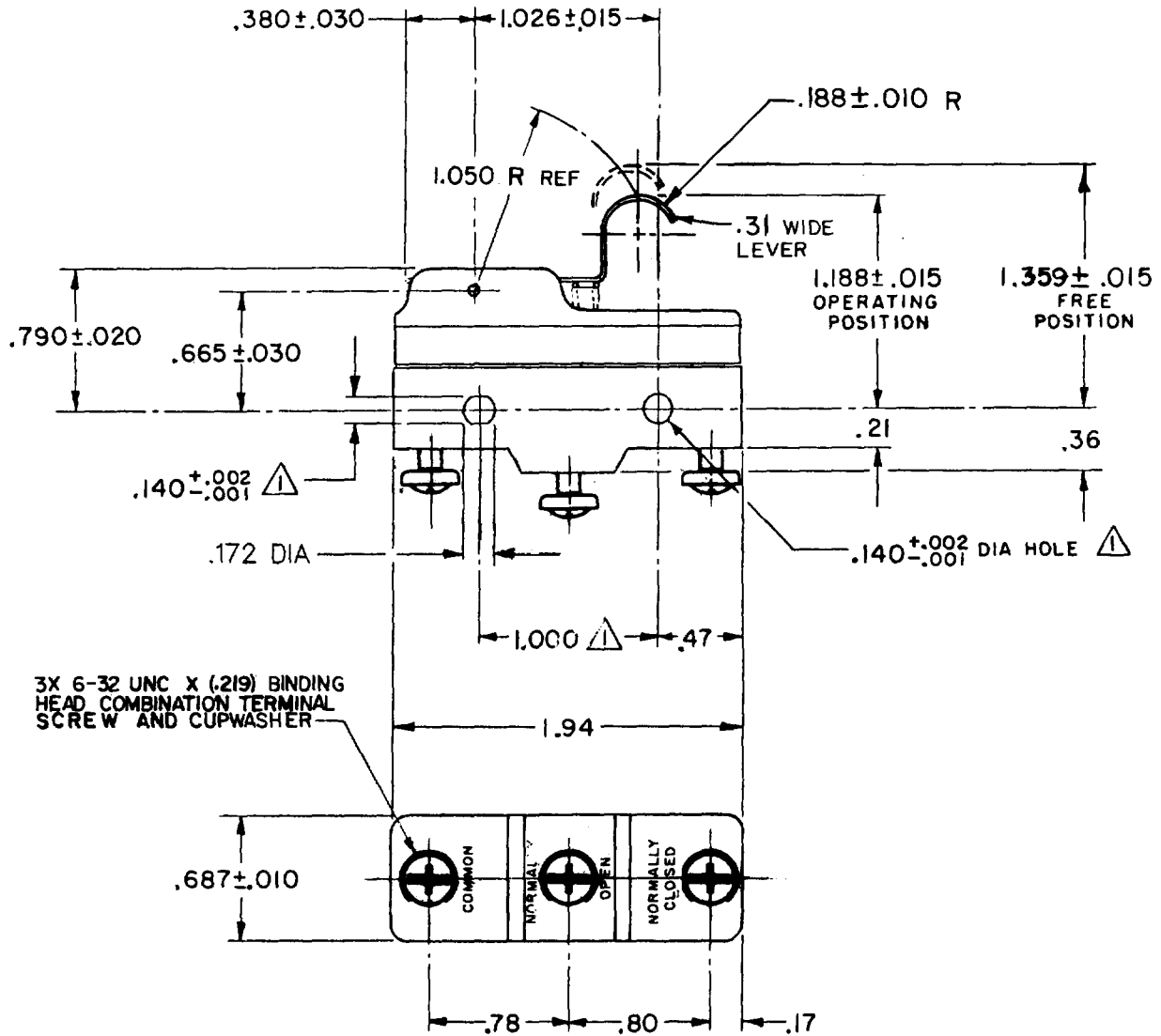
26 SEP 80

FORMTEK

FO-52848-A

DRAWN

WJM

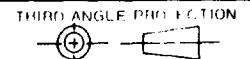


NOTE



MOUNTING HOLES WILL ACCEPT PINS OR SCREWS OF .139 MAX DIA ON 1.000±.002 CENTERS

THIS DRAWING COVERS A PROPRIETARY ITEM AND IS THE PROPERTY OF MICRO SWITCH, A DIVISION OF HONEYWELL. THIS DRAWING IS NOT TO BE COPIED OR USED WITHOUT THE APPROVAL OF MICRO SWITCH.



CHARACTERISTICS

OPERATING FORCE ---- 17 OZ MAX
RELEASE FORCE ---- 1 1/2 OZ MIN
DIFFERENTIAL TRAVEL --- .020-.050
OVERTRAVEL ----- .094 MIN

ELECTRICAL DATA

CONTACT ARRANGEMENT
S P D T
UL LISTED-FILE E12252
CODE L96 15A-125, 250 OR 480 VAC
1/8 HP-125 VAC; 1/4 HP-250 VAC
1/2 A-125 VDC; 1/4 A-250 VDC
L288
L299
L306



16A 250V ~ T85 5E4

SCALE FULL

DO NOT SCALE PRINT

TOLERANCES

APPLY TO DESIGN UNITS. CONVERSIONS ARE UNLESS OTHERWISE NOTED. TOLERANCES ARE:

DIM.	TOL.	DIM.	TOL.
mm	mm/in	in	mm/in
NO PLACES	X	1/04	X X
ONE PLACE	X,X	0.4/016	X X X
TWO PLACES	X,XX	0.16/008	X X X X
THREE PLACES	X,XXX	0.13/005	X X X X X
ANGLES			

DESIGN UNITS SI METRIC US CUSTOMARY

WEIGHT