

MICRO SWITCH

FREEPORT ILLINOIS, U.S.A
A DIVISION OF HONEYWELL
FED. MFG. CODE 9 1929

SWITCH-BASIC

CATALOG LISTING

BZ-3RW822-A2

BZ-3RW822-A2

PAGE 1 OF 1

REPLACES X74693-BZ

RELEASE NO. PR-11505

M

DRAWING NUMBER

6

ISSUE

CHECK

REVISIONS

A	CO - 7018AG	G J W	14 MAR 92
B	CO - 73287-J	J A T	22 NOV 93
C	CO - 75204-B	W L S	1 FEB 94
D	CO 77589	T S M	29 MAR 94
E	C093346	D L T	18 SEP 98

CHECK

82

13 SEPT 82

C E B

13 SEPT 82

C E B

82

10 SEP

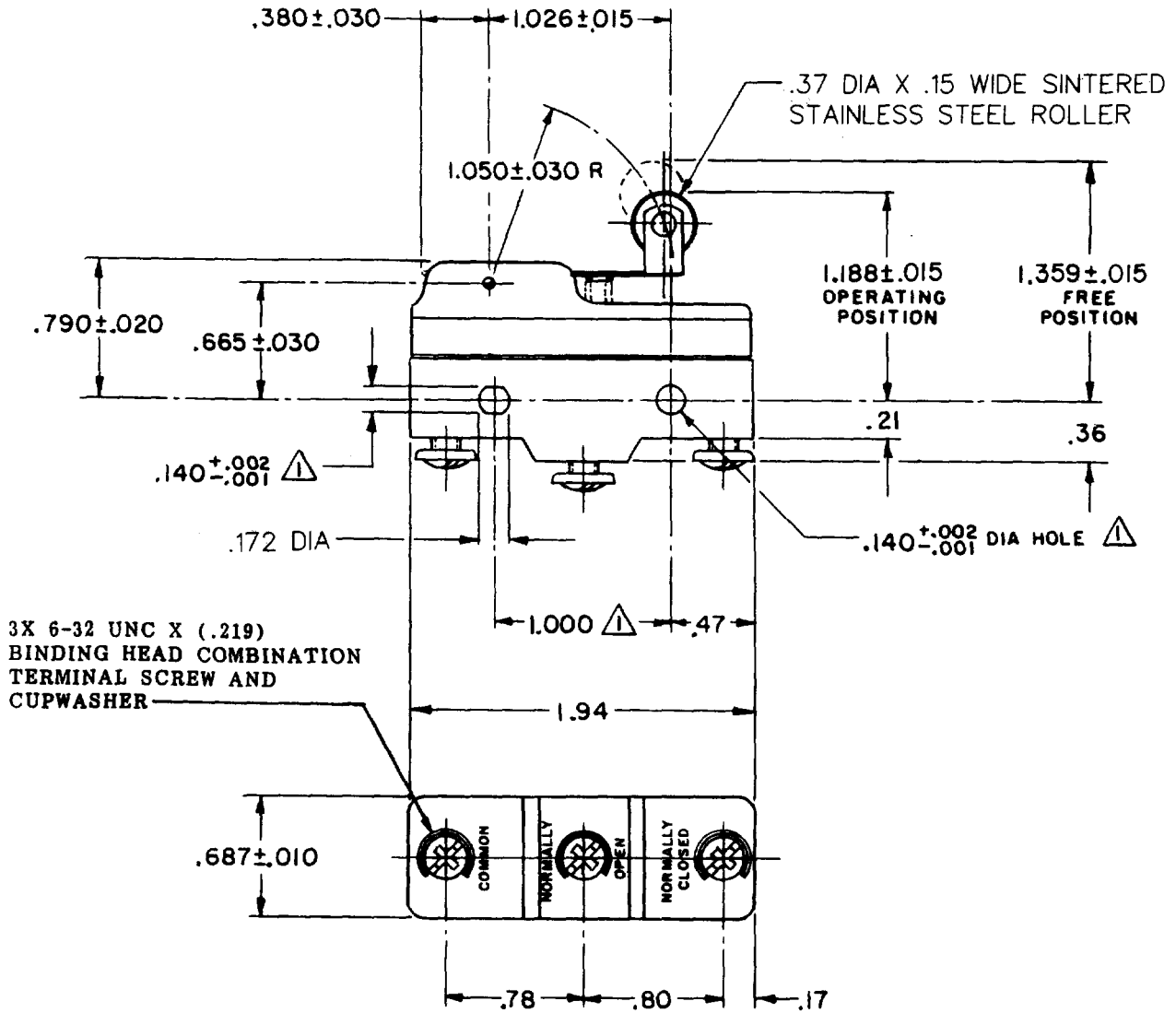
82

C J H

10 SEP

82

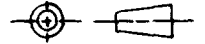
C J H



NOTES
 1 MOUNTING HOLES WILL ACCEPT PINS OR SCREWS OF .139 MAX DIA ON 1.000 ± .002 CENTERS

THIS DRAWING COVERS A PROPRIETARY ITEM AND IS THE PROPERTY OF MICRO SWITCH, A DIVISION OF HONEYWELL. THIS DRAWING IS NOT TO BE COPIED OR USED WITHOUT THE APPROVAL OF MICRO SWITCH.

THIRD ANGLE PROJECTION



CHARACTERISTICS

OPERATING FORCE --- 6 1/2 OZ MAX
 RELEASE FORCE --- 1 1/2 OZ MIN
 DIFFERENTIAL TRAVEL --- .007-.030
 OVERTRAVEL --- .094 MIN

ELECTRICAL DATA

CONTACT ARRANGEMENT
 S P D T
 -L96- 15A-125,250, OR 480VAC
 1/2A-125VDC; 1/4A-250VDC
 1/8HP-125VAC; 1/4HP-250VAC

-L288-
 -L299-
 -L306-



16A 250V ~ T85 5E4

SCALE FULL

DO NOT SCALE PRINT

APPLY TO DESIGN UNITS. CONVERSIONS ARE ONLY FOR REFERENCE. UNLESS NOTED, TOLERANCES ARE 2

	DIM.	TOL.	DIM.	TOL.
	mm	mm/in	in	mm/in
NO PLACES	X	1/64	X	0.015
ONE PLACE	X,X	0.0010	X,X	0.0010
TWO PLACES	X,XX	0.0005	X,XX	0.0005
THREE PLACES	X,XXX	0.0002	X,XXX	0.0002
ANGLES				

DESIGN UNITS SI METRIC US CUSTOMARY

WEIGHT .076 LB

FORMTEK

FO-52848-A

DRAWN