

MICRO SWITCH

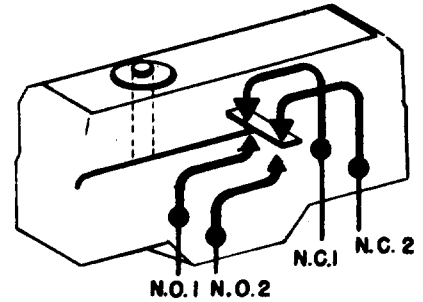
A DIVISION OF MINNEAPOLIS-HONEYWELL REGULATOR COMPANY
FREDPORT, ILLINOIS

FED. MFR. CODE 91929

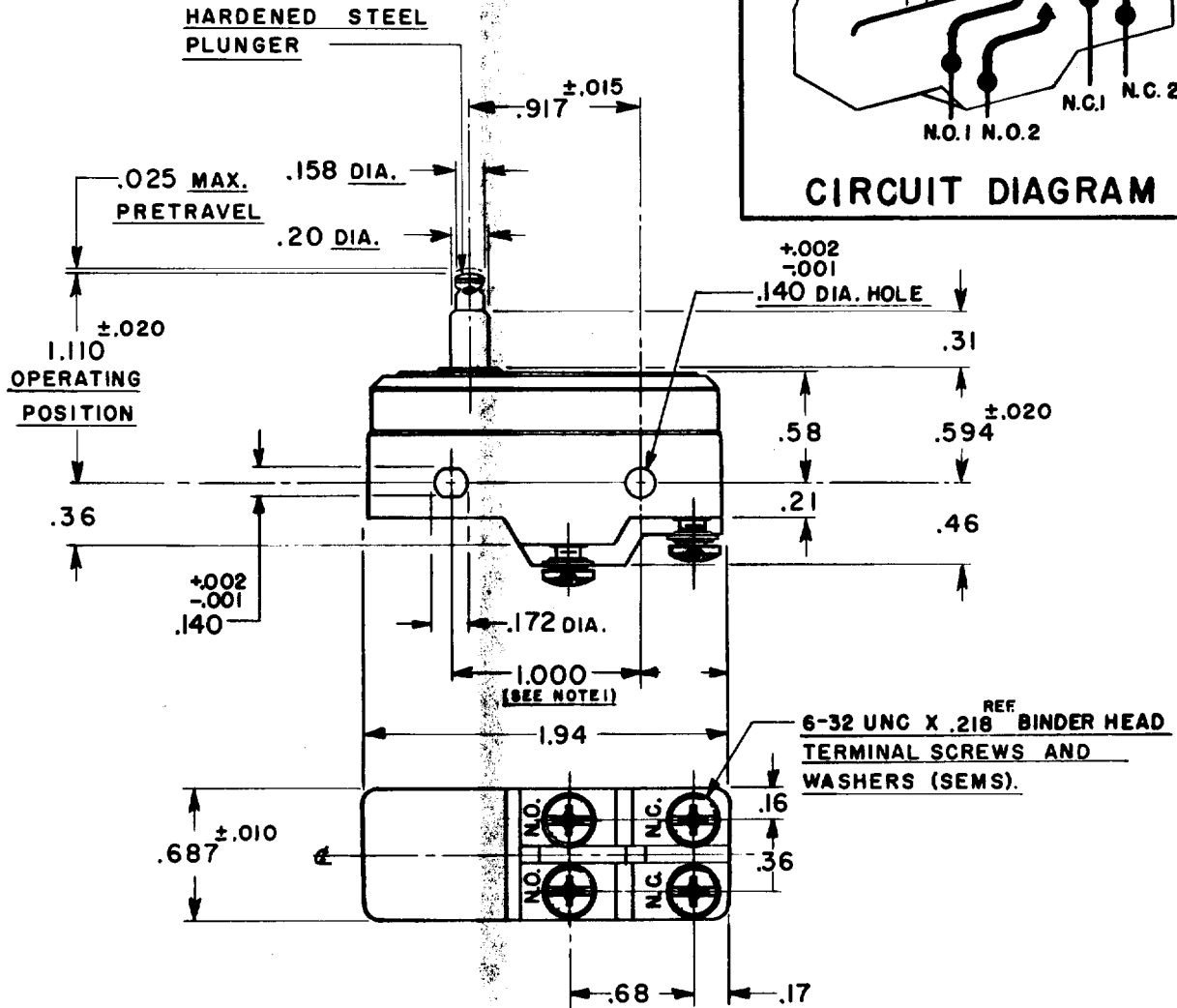
SWITCH - BASIC

CATALOG LISTING

BZ-3AST



CIRCUIT DIAGRAM



- NOTE -**
- 1- MOUNTING HOLES WILL ACCEPT PINS OR SCREWS OF .139 MAX. DIA. ON 1.000^{±.002} CENTERS.
 - 2- SUITABLE ONLY FOR APPLICATIONS IMPARTING A RAPID STROKE TO THE SWITCH PLUNGER.

THIS DRAWING COVERS A PROPRIETARY ITEM AND IS THE PROPERTY OF MICRO SWITCH, A DIVISION OF HONEYWELL. THIS DRAWING IS NOT TO BE COPIED OR USED WITHOUT THE APPROVAL OF MICRO SWITCH.

CHARACTERISTICS

OPERATING FORCE — — — — 16-26 OZ.
RELEASE FORCE — — — — 4 OZ. MIN.
DIFFERENTIAL TRAVEL — — — .002-.005
OVERTRAVEL — — — — .060 MIN.

ELECTRICAL DATA

CONTACT ARRANGEMENT
SEE CIRCUIT DIAGRAM
UL LISTED-FILE E12252
15A-125, 250 OR 480 VAC
1A-125 VDC; 0.5A-250 VDC
1/4 HP-125 VAC; 1/2 HP-250 VAC
CODE L73

SCALE FULL

DO NOT SCALE PRINT

UNLESS OTHERWISE SPECIFIED

DIMENSIONS ARE IN INCHES

TOLERANCES ARE:

ONE PLACE (.0) ±.030
TWO PLACE (.00) ±.015
THREE PLACE (.000) ±.008
ANGLES ±

WEIGHT

BZ-3AST

M

DRAWING NUMBER

88

88

ISSUE

88

REPLACES

RELEASE NO. SR 5159

CUT 14 MAR 56

CHECK

VAS 13 MAR 56

CHECK

3 MAR 61

CHECK

15 MAR 56

CHECK

RLZ

12 MAR 56

CHECK

12 MAR 56

CHECK

12 MAR 56

DRAWN