

# MICRO SWITCH

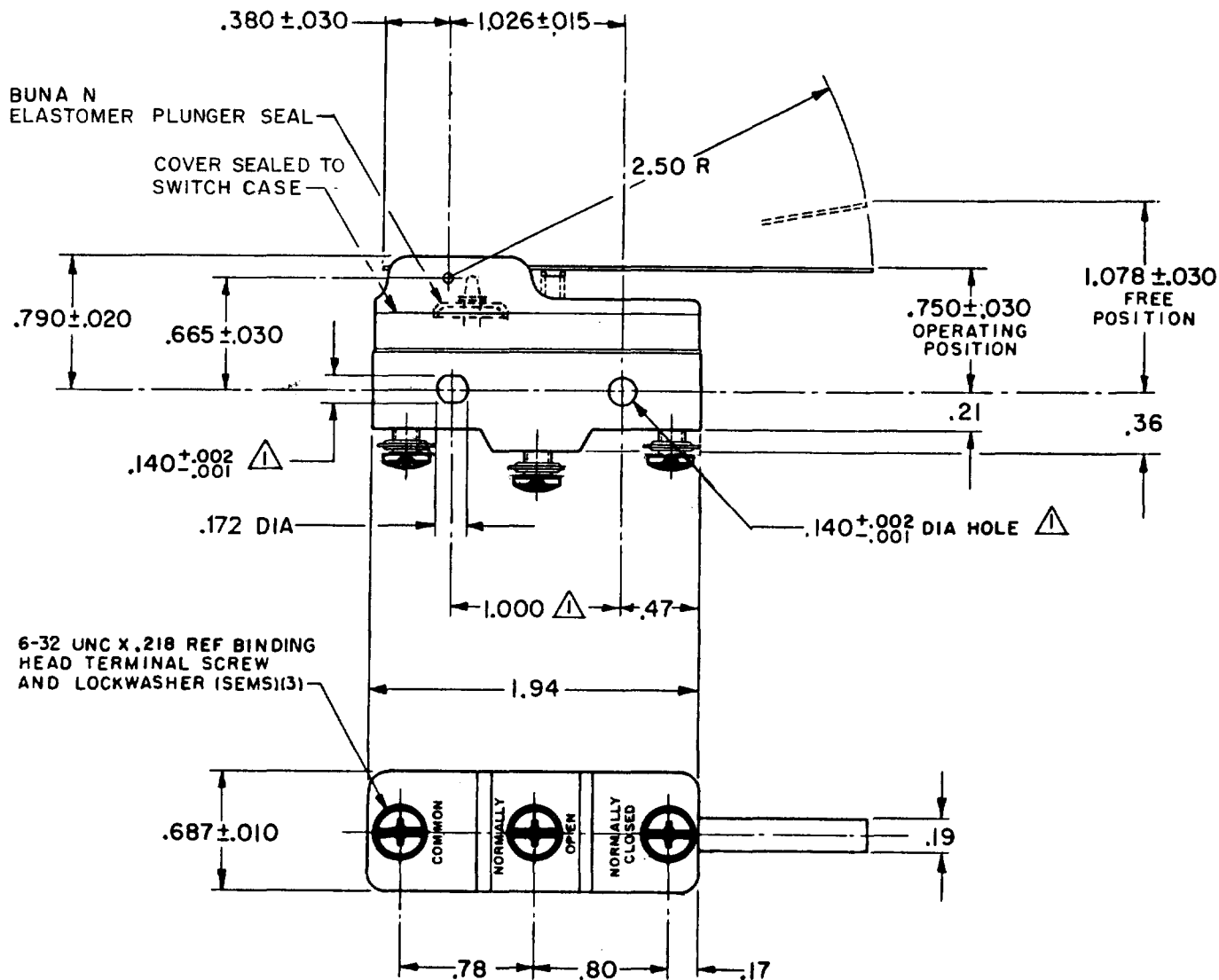
FREEMONT ILLINOIS, U.S.A.  
A DIVISION OF HONEYWELL  
FED. MFG. CODE 91929

# SWITCH - BASIC

CATALOG LISTING

## BZ-2RW855T-S

**M** BZ-2RW855T-S  
 DRAWING NUMBER  
 PAGE 1 OF 1  
 ISSUE 6  
 REVISIONS  
 A CO 39621 T M M 16 DEC 77  
 B CO67209 J A P 3 MAY 90  
 C CO-69351-D J W B 15 JUL 91  
 D CO-77588 K D R 29 MAR 94  
 E CO93346 D L T 14 SEP 98  
 CHECK GLA 17 OCT 77  
 CHECK GLA 17 OCT 77  
 DRAWN T M M 11 OCT 77  
 FORMTEK FD-52848-A

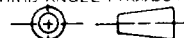


**NOTES**

- 1 MOUNTING HOLES WILL ACCEPT PINS OR SCREWS OF .139 MAX DIA ON 1.000 ±.002 CENTERS
- 2 - SEALED CONSTRUCTION PROVIDES SPLASH RESISTANCE

THIS DRAWING COVERS A PROPRIETARY ITEM AND IS THE PROPERTY OF MICRO SWITCH, A DIVISION OF HONEYWELL. THIS DRAWING IS NOT TO BE COPIED OR USED WITHOUT THE APPROVAL OF MICRO SWITCH.

THIRD ANGLE PROJECTION



**CHARACTERISTICS**

OPERATING FORCE — 2 1/2 OZ MAX  
 RELEASE FORCE — — — 1/2 OZ MIN  
 DIFFERENTIAL TRAVEL — — .007 — .050  
 OVERTRAVEL — — — — .219 MIN

**ELECTRICAL DATA**

CONTACT ARRANGEMENT  
S P D T

L96  
 15A 125, 250 OR 480 VAC  
 1/8 HP 125 VAC, 1/4 HP 250 VAC  
 1/2A 125 VDC, 1/4A 250 VDC  
 L288  
 L299  
 L306  
 CE Ⓟ RA Ⓟ  
 16A 250V ~ T85 5E4

**SCALE FULL**

DO NOT SCALE PRINT

TOLERANCES  
 APPLY TO DESIGN UNITS. CONVERSIONS ARE ONLY FOR REFERENCE. UNLESS NOTED, TOLERANCES ARE ±

DIM.	TOL.	DIM.	TOL.
mm	mm/in	.in	mm/in
NO PLACES	X	1/64	
ONE PLACE	X,X	0.4/016	X X 0.8/03
TWO PLACES	X,XX	0.15/006	X,XX 0.38/015
THREE PLACES	X,XXX		X,XXX 0.13/005
ANGLES			

DESIGN UNITS  SI METRIC  US CUSTOMARY

WEIGHT .076 LB