

MICRO SWITCH

A DIVISION OF MINNEAPOLIS-HONEYWELL REGULATOR COMPANY

FED. MFR. CODE 91929

SWITCH - BASIC

CATALOG LISTING
BZ-2RW822-P4

BZ-2RW822-P4

PAGE 1 OF 1

M

DRAWING NUMBER

14

ISSUE

REPLACES

RELEASE NO.

CHECK

REVISIONS

A	CO	18736	8 CH	23 APRIL 62
B	CO	34306	8 L H	8 JUL 75
C	CO	52446	WJM	31 JAN 83
D	CO	70184-M	8 N T	2 JUN 92
E	CO	75287-G	JAT	20 OCT 93
F	CO	75204B	DAW	1 FEB 94
G	CO	75367B	L J F	3 MAR 94
H	CO	77863	G J W	7 MAY 96
J	CO	C093346	DLT	2 SEP 98

CHECK

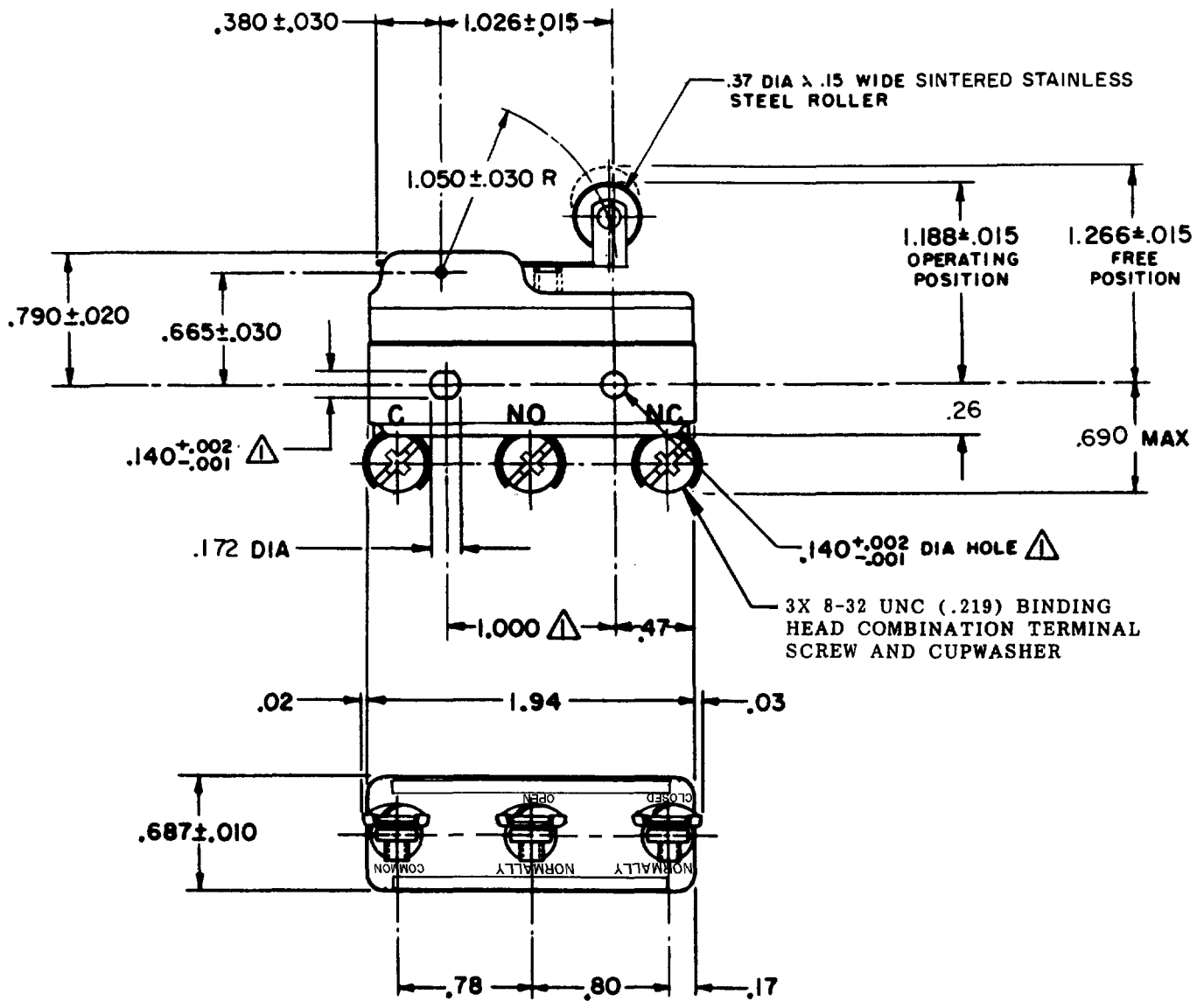
14 JUNE 97

DAW

CHECK

23 APRIL 62

DAW



NOTE
 ▲ - MOUNTING HOLES WILL ACCEPT PINS OR SCREWS OF .139 MAX DIA ON 1.000 ±.002 CENTERS

THIS DRAWING COVERS A PROPRIETARY ITEM AND IS THE PROPERTY OF MICRO SWITCH, A DIVISION OF MINNEAPOLIS-HONEYWELL REGULATOR CO. THIS DRAWING IS NOT TO BE COPIED OR USED WITHOUT THE APPROVAL OF MICRO SWITCH.

CHARACTERISTICS	ELECTRICAL DATA	SCALE FULL
OPERATING FORCE ----- 6 OZ MAX	CONTACT ARRANGEMENT S P D T	DO NOT SCALE PRINT
RELEASE FORCE ----- 1 1/2 OZ MIN	-L74- 15A-125, 250, OR 480 VAC; 2A-600 VAC 1/2 A-125 VDC; 1/4 A-250 VDC 1/8 HP-125 VAC; 1/4 HP-250 VAC	UNLESS OTHERWISE SPECIFIED DIMENSIONS ARE IN INCHES TOLERANCES ARE:
DIFFERENTIAL TRAVEL ----- .003-.020	-L288- -L299- -L306-	ONE PLACE (.0) ±.000 TWO PLACE (.00) ±.015 THREE PLACE (.000) ±.005 ANGLES ±
OVERTRAVEL ----- .094 MIN	CE D RU SI 16A 250V ~ T85 5E4	WEIGHT .075 LB

FORMTEK

D-50378

DRAWN

GCH