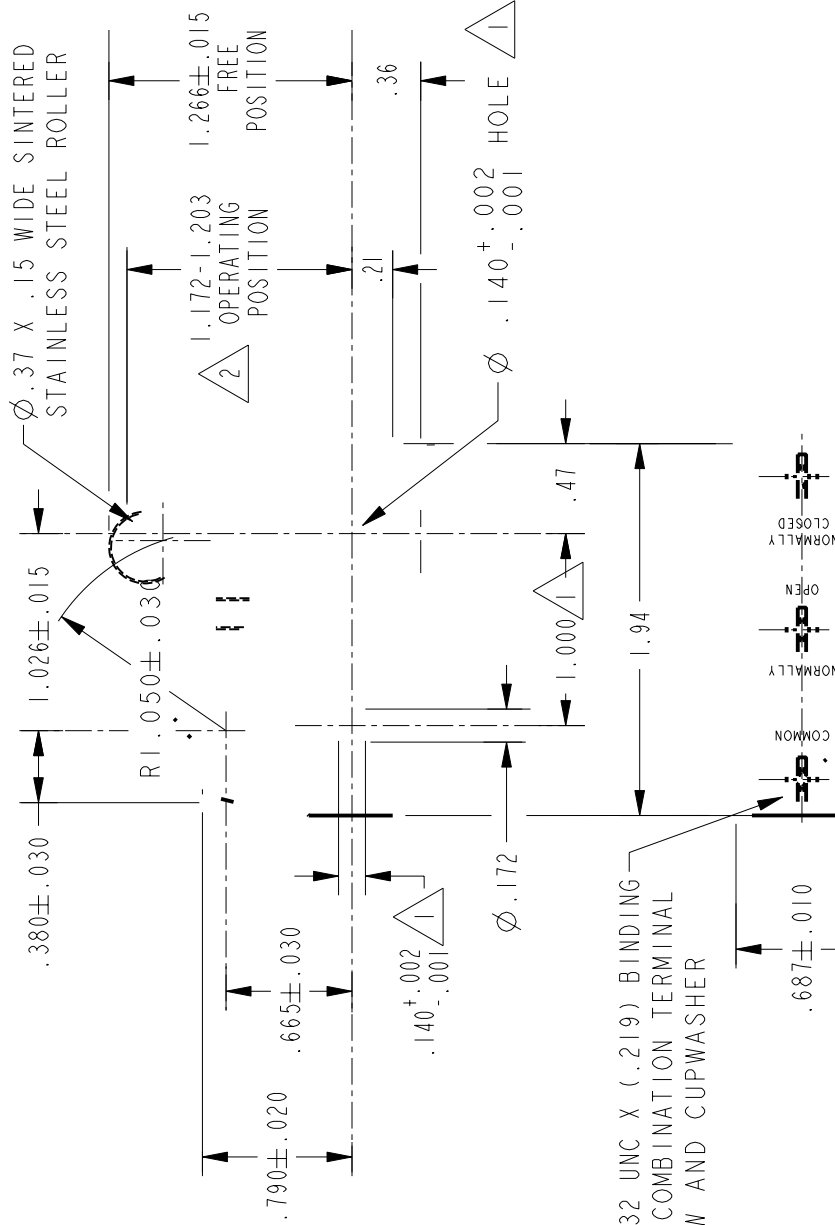


CATALOG LISTING		PAGE 1 OF 1	
BZ-2RW82299-A2		RELEASE NO. SR-7217	
ISSUE		12	

MOLDED NUT WITH SELF
LOCKING 6-32 UNC THREAD
X .250 LONG ADJUSTING
SCREW WITH .062 HEX SOCKET



3X 6-32 UNC X (.219) BINDING
HEAD COMBINATION TERMINAL
SCREW AND CUPWASHER

NOTES

- 1 MOUNTING HOLES WILL ACCEPT PINS OR SCREWS OF ϕ .139 MAX ON 1.000±.002 CENTERS
- 2 ADJUSTING SCREW PERMITS ADJUSTMENT OF OPERATING POSITION THROUGH RANGE INDICATED
- 3 DO NOT OVERTRAVEL MORE THAN .145 FROM ANY OPERATING POSITION TO PROVIDE OPTIMUM MECHANICAL LIFE

ANSI Y14.5M-1982 APPLIES

THIS DRAWING COVERS A PROPRIETARY ITEM AND IS THE PROPERTY OF MICRO SWITCH, A DIVISION OF HONEYWELL. THIS DRAWING IS NOT TO BE COPIED OR USED WITHOUT THE APPROVAL OF MICRO SWITCH.

THIRD ANGLE PROJECTION

REVISIONS	ELECTRICAL DATA		SCALE		FULL		SCALE PRINT	
A 0995815C	CONTACT ARRANGEMENT		UNLESS OTHERWISE SPECIFIED		TOLERANCES ARE		DO NOT	
TSM 7MAR00	S P D T		ONE PLACE (.0)		TWO PLACE (.00)		THREE PLACE (.000)	
	OPERATING FORCE ----- 6 OZ MAX		ANGLES		TSM		WEIGHT	
	RELEASE FORCE ----- 1 1/2 OZ MIN		16A 250V		L288			
	DIFFERENTIAL TRAVEL ----- .003-.020		16A 250V		L299			
	OVERTRAVEL ----- 3 .040 MIN FROM 1.172 OPERATING POSITION		16A 250V		L306			
			15A 125, 250 OR 480 VAC					
			1/8HP 125 VAC, 1/4HP 250 VAC					
			1/2A 125 VDC, 1/4A 250 VDC					
			T85 5E4					

PTC/CAD 2D

DRAWN

