

MICRO SWITCH

FREEPORT ILLINOIS, U S A
A DIVISION OF HONEYWELL
FED. MFG. CODE 91929

SWITCH-BASIC

CATALOG LISTING

BZ-2RW822551T

AQB0095

BZ-2RW822551T

CATALOG LISTING

PAGE 1 OF 1

REPLACES

RELEASE NO. CO-34271

CHECK

09JAN06

RJ

CHECK

4 NOV 74

CHECK

4 NOV 74

CHECK

24 OCT 74

CHECK

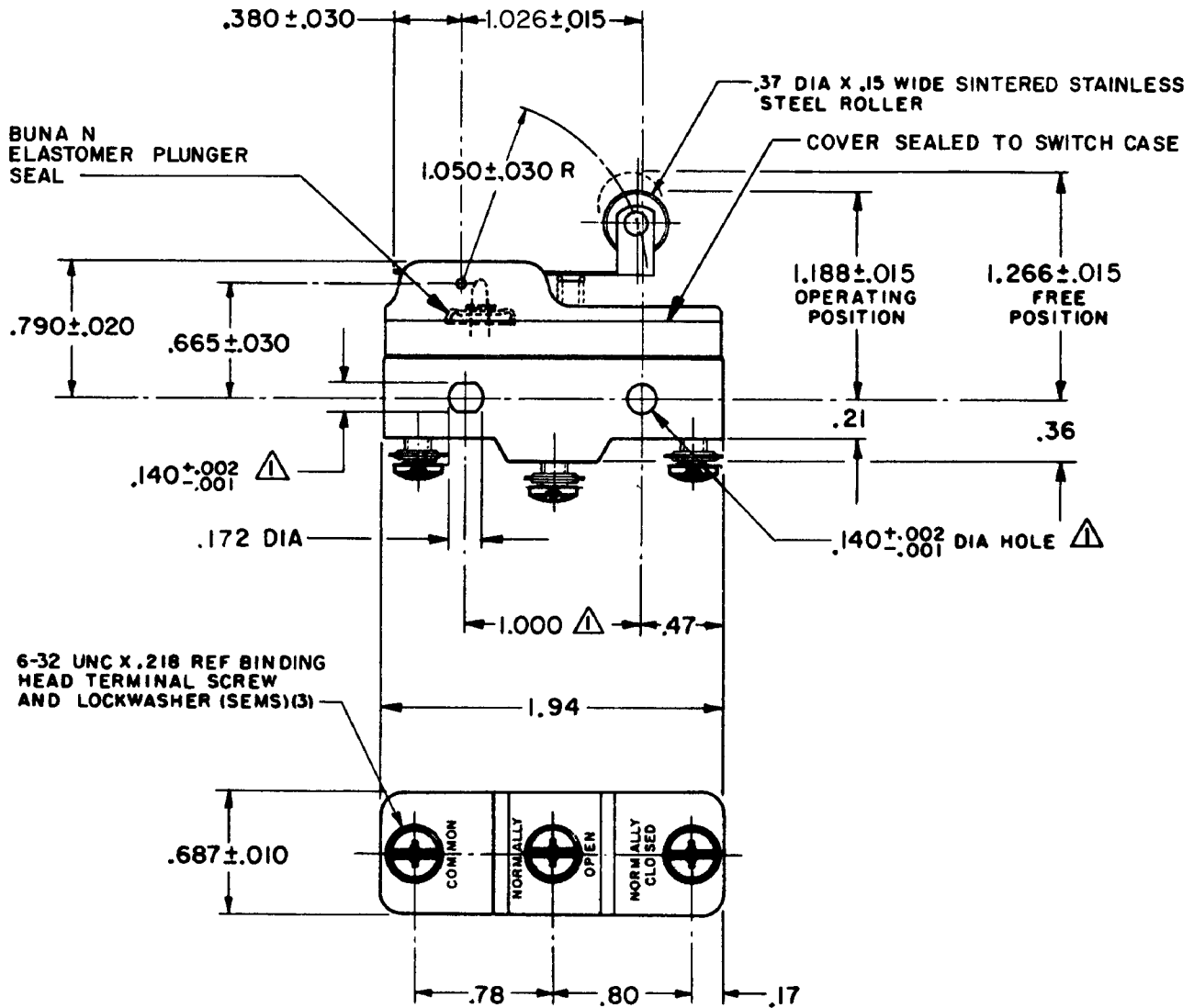
24 OCT 74

M

ISSUE
10

REVISIONS

A	CO67209	J A P	09JAN06
3	MAY 90		
B	CO-89351-D	JWS	15 JUL 91
C	CO-70184-M	G R T	2 JUN 92
D	CO-75204B	DAW	1 FEB 94
E	CO-77589	NAM	29 MAR 94
F	CO-82006	JAL	23 APR 96
G	CO84951A	JAK	1 DEC 97
H	CO93346	DLT	18 SEP 98
J	CO017580	TSG	09JAN06

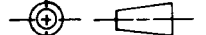


NOTES

- ▲ MOUNTING HOLES WILL ACCEPT PINS OR SCREWS OF .139 MAX DIA ON 1.000 ± .002 CENTERS
- 2 - SEALED CONSTRUCTION PROVIDES SPLASH RESISTANCE

THIS DRAWING COVERS A PROPRIETARY ITEM AND IS THE PROPERTY OF MICRO SWITCH, A DIVISION OF HONEYWELL. THIS DRAWING IS NOT TO BE COPIED OR USED WITHOUT THE APPROVAL OF MICRO SWITCH.

THIRD ANGLE PROJECTION



CHARACTERISTICS

OPERATING FORCE --- 6 OZ MAX
RELEASE FORCE --- 1/2 OZ MIN
DIFFERENTIAL TRAVEL --- .003 - .020
OVERTRAVEL --- .094 MIN

ELECTRICAL DATA

CONTACT ARRANGEMENT
S P DT

L96
15A 125, 250 OR 480 VAC
1/8 HP 125 VAC, 1/4 HP 250 VAC
1/2A 125 VDC, 1/4A 250 VDC

L288
L306
L315



16A 250V ~ T85 5E4

SCALE FULL

DO NOT SCALE PRINT

TOLERANCES

APPLY TO DESIGN UNITS CONVERSIONS ARE ONLY FOR REFERENCE UNLESS NOTED TOLERANCES ARE ±

DIM.	TOL.	DIM.	TOL.
mm	mm/in	in	mm/in
NO PLACES	X	1/04	
ONE PLACE	X,X	0.4/016	X X 0.8/03
TWO PLACES	X,XX	0.15/006	X XX 0.38/015
THREE PLACES	X,XXX		X XXX 0.13/003
ANGLES			

DESIGN UNITS SI METRIC

US CUSTOMARY

WEIGHT .076 LB

FORMTEK

DRAWN

BEN