

# MICRO SWITCH

FREEMONT ILLINOIS U S A  
A DIVISION OF HONEYWELL  
FED. MFG. CODE 91829

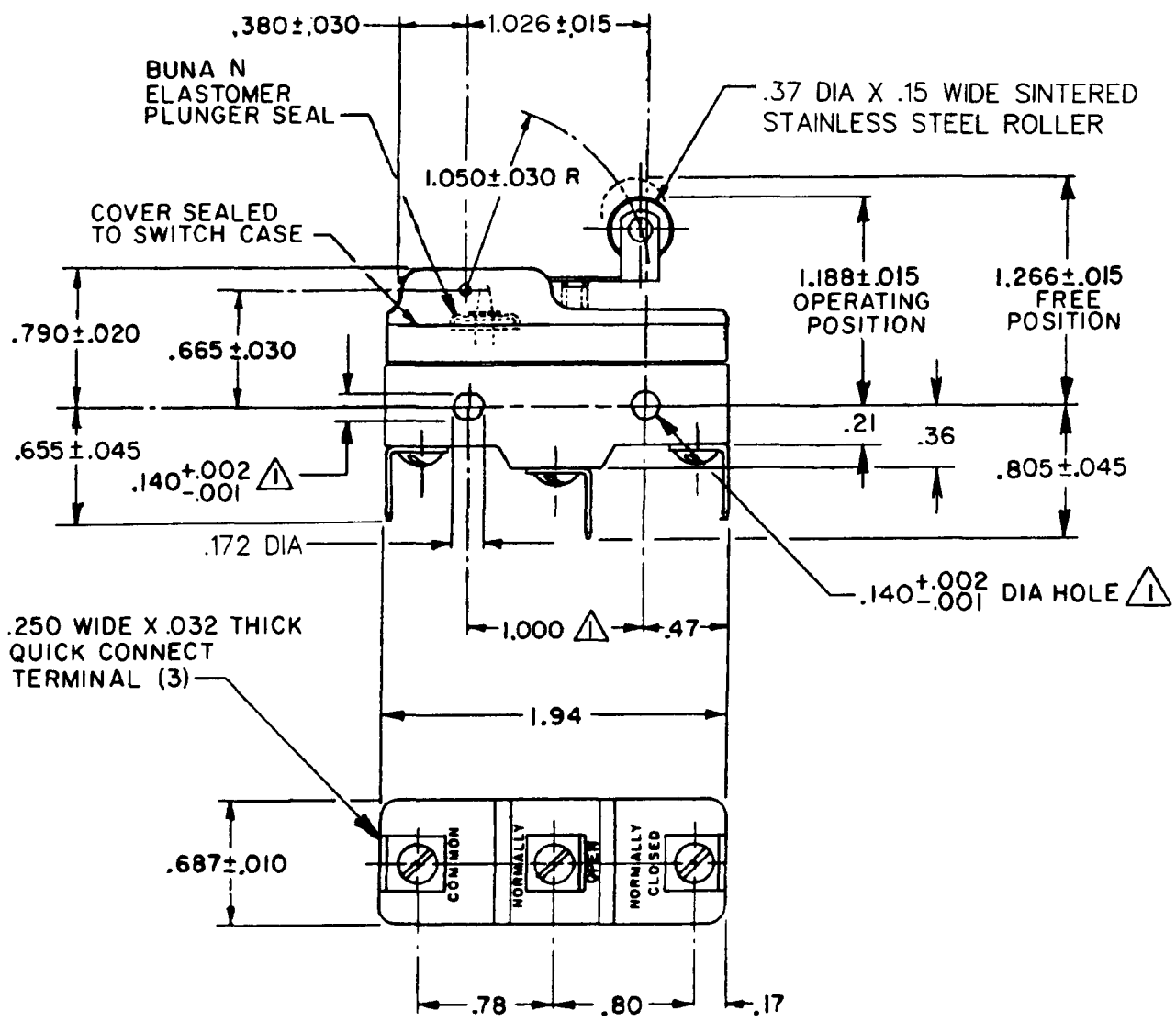
# SWITCH - BASIC

CATALOG LISTING  
BZ-2RW8225551-D6

AQB2102

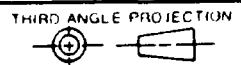
CATALOG LISTING  
BZ-2RW8225551-D6  
PAGE 1 OF 1  
M  
ISSUE  
10

RELEASE NO. PR-18010  
RF PLACES X90325-BZ  
CHECK  
06 JAN 06  
RJ  
EHCN  
21 FEB 90  
DRAW  
90  
FORMTEK  
DRAWN  
B A B15 FEB 90



- NOTES
- 1 MOUNTING HOLES WILL ACCEPT PINS OR SCREWS OF .139 MAX DIA ON 1.000±.002 CENTERS
  - 2 - SEALED CONSTRUCTION PROVIDES SPLASH RESISTANCE

THIS DRAWING COVERS A PROPRIETARY ITEM AND IS THE PROPERTY OF MICRO SWITCH, A DIVISION OF HONEYWELL. THIS DRAWING IS NOT TO BE COPIED OR USED WITHOUT THE APPROVAL OF MICRO SWITCH.



<b>CHARACTERISTICS</b> OPERATING FORCE — — 6 OZ MAX RELEASE FORCE — — 1 1/2 OZ MIN DIFFERENTIAL TRAVEL — .003—.020 OVERTRAVEL — — — .094 MIN	<b>ELECTRICAL DATA</b> CONTACT ARRANGEMENT S P D T	<b>SCALE FULL</b> DO NOT SCALE PRINT <b>TOLERANCES</b> APPLY TO DESIGN UNITS CONVERSIONS ARE ONLY FOR REFERENCE UNLESS NOTED TOLERANCES ARE 2																															
	L96 15A 125, 250 OR 480 VAC 1/8 HP 125 VAC, 1/4 HP 250 VAC 1/2A 125 VDC, 1/4A 250 VDC	<table border="1"> <thead> <tr> <th></th> <th>DIM</th> <th>TOL.</th> <th>DIM</th> <th>TOL.</th> </tr> <tr> <th></th> <th>mm</th> <th>mm/in</th> <th>in</th> <th>mm/in</th> </tr> </thead> <tbody> <tr> <td>NO PLACES</td> <td>X</td> <td>1/64</td> <td>X X</td> <td>0.07/03</td> </tr> <tr> <td>TWO PLACES</td> <td>X, X</td> <td>0.4/016</td> <td>X X X</td> <td>0.36/015</td> </tr> <tr> <td>THREE PLACES</td> <td>X, X, X</td> <td>0.15/006</td> <td>X X X X</td> <td>0.13/006</td> </tr> <tr> <td>ANGLES</td> <td></td> <td></td> <td></td> <td></td> </tr> </tbody> </table>		DIM	TOL.	DIM	TOL.		mm	mm/in	in	mm/in	NO PLACES	X	1/64	X X	0.07/03	TWO PLACES	X, X	0.4/016	X X X	0.36/015	THREE PLACES	X, X, X	0.15/006	X X X X	0.13/006	ANGLES					B METRIC <input type="checkbox"/> US CUSTOMARY <input checked="" type="checkbox"/>
		DIM	TOL.	DIM	TOL.																												
		mm	mm/in	in	mm/in																												
NO PLACES	X	1/64	X X	0.07/03																													
TWO PLACES	X, X	0.4/016	X X X	0.36/015																													
THREE PLACES	X, X, X	0.15/006	X X X X	0.13/006																													
ANGLES																																	
-L288- -L315- -L306-		DESIGN UNITS <input type="checkbox"/>																															
16A 250V ~ T85 5E4	WEIGHT .076 LB																																