

# MICRO SWITCH

FREEPORT ILLINOIS, U.S.A  
A DIVISION OF HONEYWELL  
FED. MFG. CODE 91929

## SWITCH - BASIC

CATALOG LISTING

**BZ-2RW822244-A2**

**M** BZ-2RW822244-A2

PAGE 1 OF 1

REPLACES  
RELEASE NO. PR-3708

DRAWING  
NUMBER

6

ISSUE

CHECK

REVISIONS

A	CO-32760 PR-3708	21 NOV 73
B	CO-7018-F	31 JAN 92
C	CO-73287-J	22 NOV 93
D	CO-84680-C	27 AUG 97
E	CO93346	28 AUG 98

CHECK

27 NOV 73

CHECK

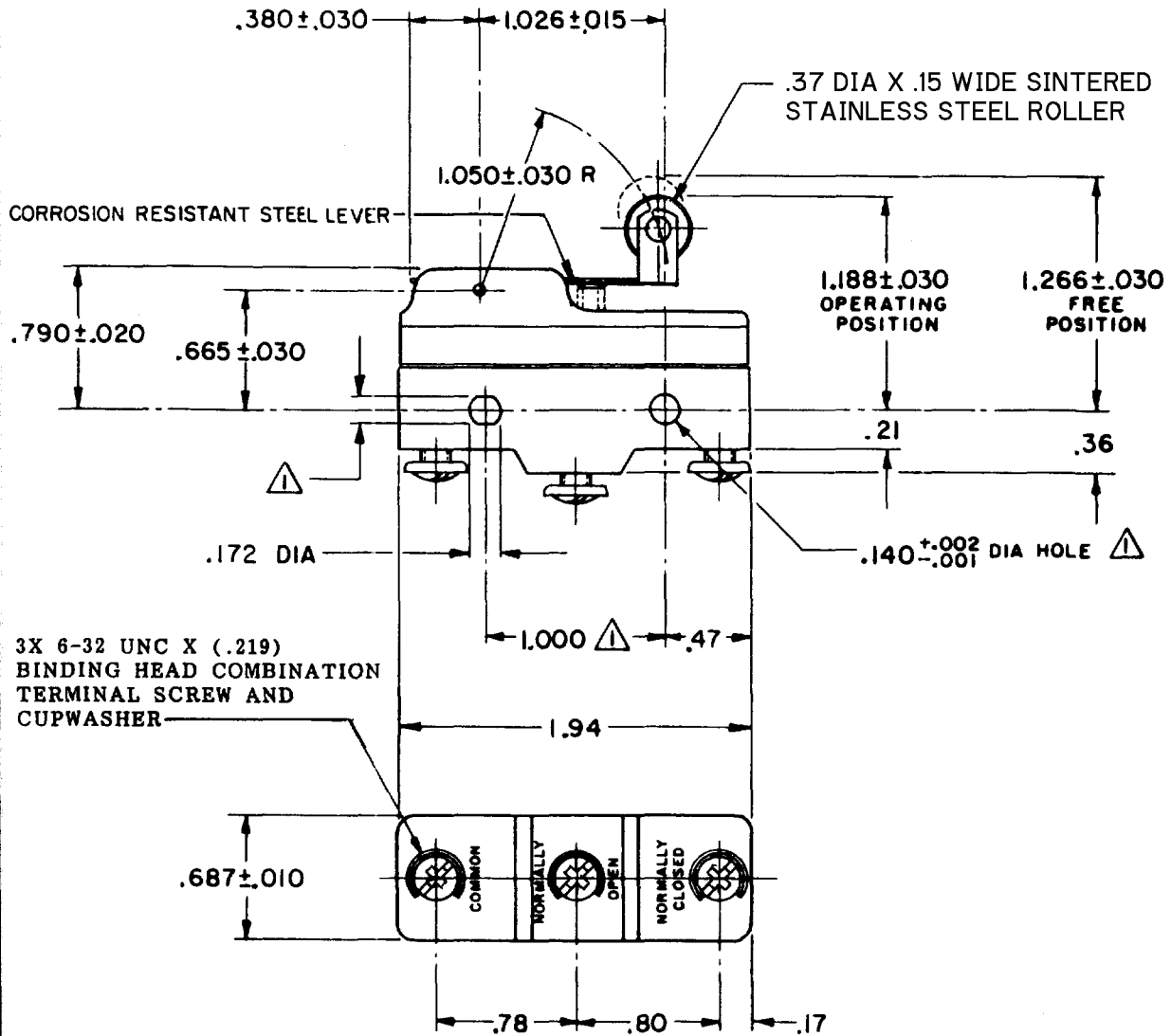
LSD

73

NOV

R E R 21




FORMTEK  
DRAWN



NOTES

- ▲ - MOUNTING HOLES WILL ACCEPT PINS OR SCREWS OF .139 MAX DIA ON 1.000 ± .002 CENTERS
- 2 - SWITCH WILL WITHSTAND TEMPERATURE OF 400° F FOR 100 HOURS

THIS DRAWING COVERS A PROPRIETARY ITEM AND IS THE PROPERTY OF MICRO SWITCH, A DIVISION OF HONEYWELL. THIS DRAWING IS NOT TO BE COPIED OR USED WITHOUT THE APPROVAL OF MICRO SWITCH.

CHARACTERISTICS	ELECTRICAL DATA	SCALE FULL
OPERATING FORCE - - - - - 6 OZ MAX	CONTACT ARRANGEMENT S P D T	DO NOT SCALE PRINT
RELEASE FORCE - - - - - 1 1/2 OZ MIN	L35 5A 125, 250 OR 480 VAC 1/2A 125 VDC, 1/4A 250 VDC	UNLESS OTHERWISE NOTED DIMENSIONS ARE IN INCHES <b>TOLERANCES ARE</b>
DIFFERENTIAL TRAVEL - - - - .003-.020	L288   	ONE PLACE (.01) ± .030 TWO PLACE (.001) ± .015 THREE PLACE (.000) ± .005
OVERTRAVEL - - - - - .094 MIN		ANGLES ±
		WEIGHT .076 LB