

# MICRO SWITCH

A DIVISION OF MINNEAPOLIS-HONEYWELL REGULATOR COMPANY  
MINNETONKA, MINNESOTA

FED. MFR. CODE 91929

## SWITCH - BASIC

CATALOG LISTING

### BZ-2RW8219-A2

BZ-2RW8219-A2

PAGE 1 OF 1

M

DRAWING NUMBER

7

ISSUE

REPLACES

RELEASE NO.

CHECK

REVISIONS

A	CO	116736	26 MAR 62
B	CO	73287-J	22 NOV 93
C	CO	75204B	1 FEB 94
D	CO	77589	29 MAR 94
E	CO	C093346	

CHECK

DAW 11, APR 62

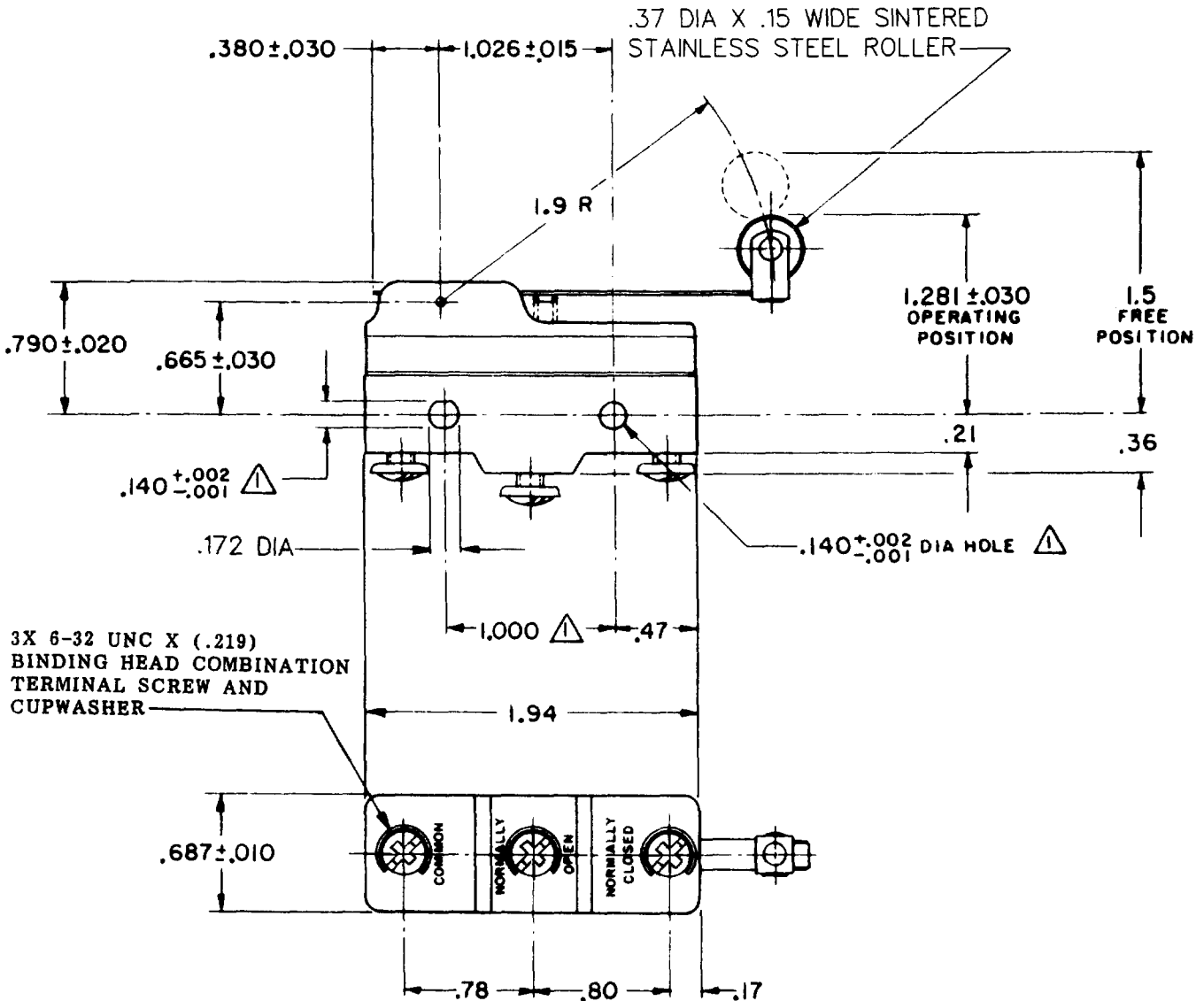
CHECK

26 MAR 62

G C H

FORMTEK

O-50376



3X 6-32 UNC X (.219) BINDING HEAD COMBINATION TERMINAL SCREW AND CUPWASHER

NOTE  
 ▲ MOUNTING HOLES WILL ACCEPT PINS OR SCREWS OF .139 MAX DIA ON 1.000 ± .002 CENTERS

THIS DRAWING COVERS A PROPRIETARY ITEM AND IS THE PROPERTY OF MICRO SWITCH, A DIVISION OF MINNEAPOLIS-HONEYWELL REGULATOR CO. THIS DRAWING IS NOT TO BE COPIED OR USED WITHOUT THE APPROVAL OF MICRO SWITCH.

CHARACTERISTICS	ELECTRICAL DATA		SCALE FULL
OPERATING FORCE ----- 3 1/2 OZ MAX	CONTACT ARRANGEMENT S P D T	BREAK DISTANCE .020 MIN	DO NOT SCALE PRINT
RELEASE FORCE ----- 3/4 OZ MIN	UNDERWRITERS' LAB. INC. LISTED RATING		UNLESS OTHERWISE SPECIFIED DIMENSIONS ARE IN INCHES <b>TOLERANCES ARE:</b>
DIFFERENTIAL TRAVEL ----- .004-.040	-L96- 15A-125, 250, OR 400 VAC 1/2 A-125 VDC; 1/4 A-250 VDC 1/8 HP-125 VAC; 1/4 HP-250 VAC		
OVERTRAVEL ----- .250 MIN	-L288- -L299- -L306-	CE D SF 16A 250V ~ T85 5E4	ONE PLACE (.9) ±.030 TWO PLACE (.00) ±.015 THREE PLACE (.000) ±.005 ANGLES ±
			WEIGHT .076 LB