

MICRO SWITCH
a Honeywell Division

SWITCH - BASIC

CATALOG LISTING

BZ-2RW80555113-A2

FED.MFG.CODE 91929

REPLACES X94420-BZ

CATALOG LISTING
BZ-2RW80555113-A2
PAGE 1 OF 1

RELEASE NO. PR-19564

ISSUE
M

5

CHECK

REVISIONS

A	CO	73287-J	GRT	23 NOV 93
B	CO	77589	TSM	30 MAR 94
C	CO	80744	GRT	23 MAY 95
D	CO	93346		

CHECK

DLT

18 SEP 98

CHECK

LAD 7 JAN 92

CHECK

LAD 7 JAN 92

CHECK

LAD 7 JAN 92

CHECK

LAD 7 JAN 92

CHECK

LAD 7 JAN 92

CHECK

LAD 7 JAN 92

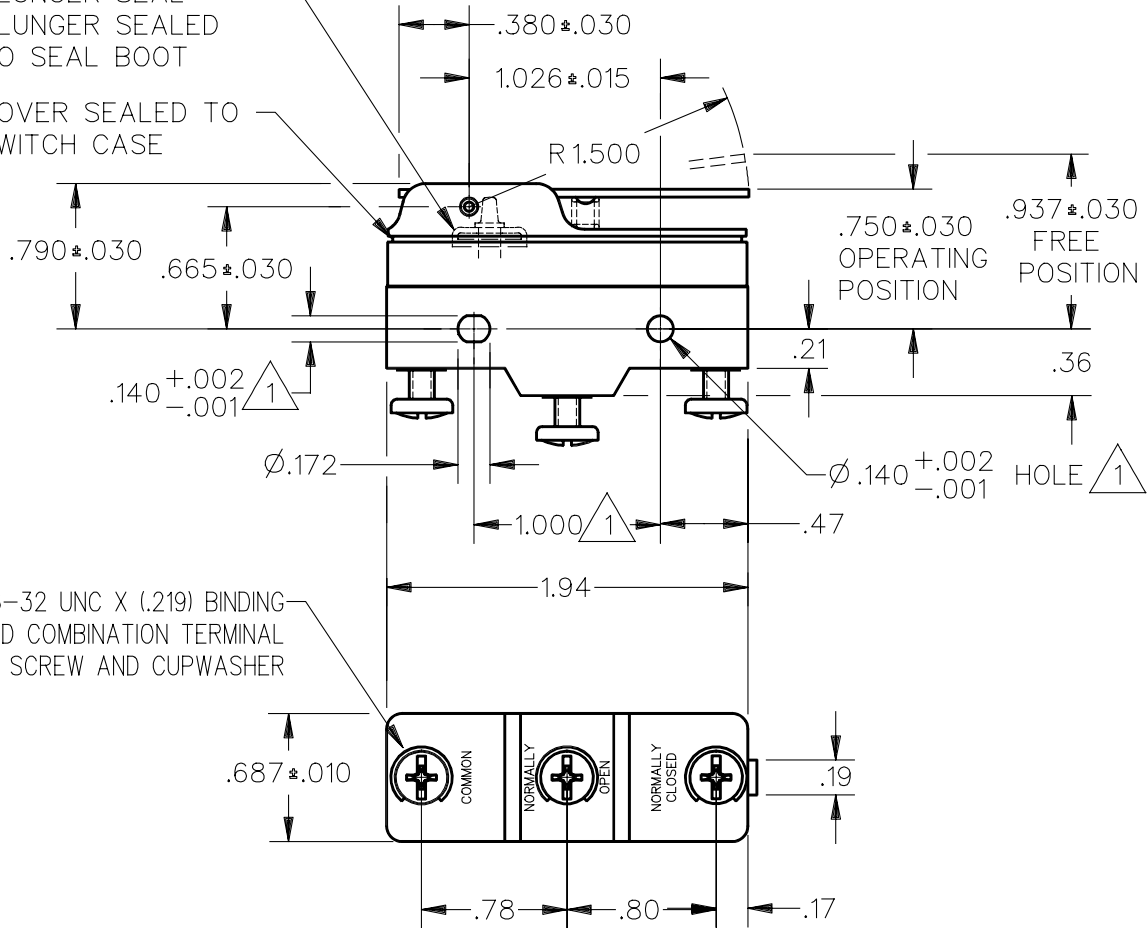
CHECK

LAD 7 JAN 92

BUNA N ELASTOMER
PLUNGER SEAL
PLUNGER SEALED
TO SEAL BOOT

COVER SEALED TO
SWITCH CASE

3X 6-32 UNC X (.219) BINDING-
HEAD COMBINATION TERMINAL
SCREW AND CUPWASHER

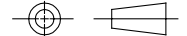


- NOTES
 1 MOUNTING HOLES WILL ACCEPT PINS OR SCREWS OF .139 MAX DIA ON 1.000 ±.002 CENTERS
 2 - SEALED CONSTRUCTION PROVIDES SPLASH RESISTANCE

ANSI Y14.5M-1982 APPLIES

THIS DRAWING COVERS A PROPRIETARY ITEM AND IS THE PROPERTY OF MICRO SWITCH, A DIVISION OF HONEYWELL. THIS DRAWING IS NOT TO BE COPIED OR USED WITHOUT THE APPROVAL OF MICRO SWITCH.

THIRD ANGLE PROJECTION



CHARACTERISTICS	ELECTRICAL DATA	SCALE FULL	DO NOT SCALE PRINT
OPERATING FORCE --- 5.0 OZ MAX	CONTACT ARRANGEMENT S P D T	UNLESS OTHERWISE SPECIFIED TOLERANCES ARE ONE PLACE (.0) ±.030 TWO PLACE (.00) ±.015 THREE PLACE (.000) ±.005 ANGLES ± WEIGHT .073 LB	
RELEASE FORCE --- 3/4 OZ MIN	L96 15A 125, 250 OR 480 VAC 1/8HP 125 VAC, 1/4HP 250 VAC 1/2A 125 VDC, 1/4A 250 VDC		
DIFFERENTIAL TRAVEL -- .004 - .030	L288 L299 L306		
OVERTRAVEL - - - - - .141 MIN	CE ® RUL ® 16A 250V ~ T85 5E4		

DDM/CAD
DRAWN

GRT 2 JAN 92