



MICRO SWITCH

FREEDPORT, ILLINOIS, U.S.A.
A DIVISION OF HONEYWELL

FED. MFG. CODE 91889

SWITCH - BASIC

CATALOG LISTING

BZ-2RW80161-A2

APR9900

(M) X30573
ISSUE 1

M BZ-2RW80161-A2
PAGE 1 OF 1

DRAWING
NUMBER

7

ISSUE

REPLACES

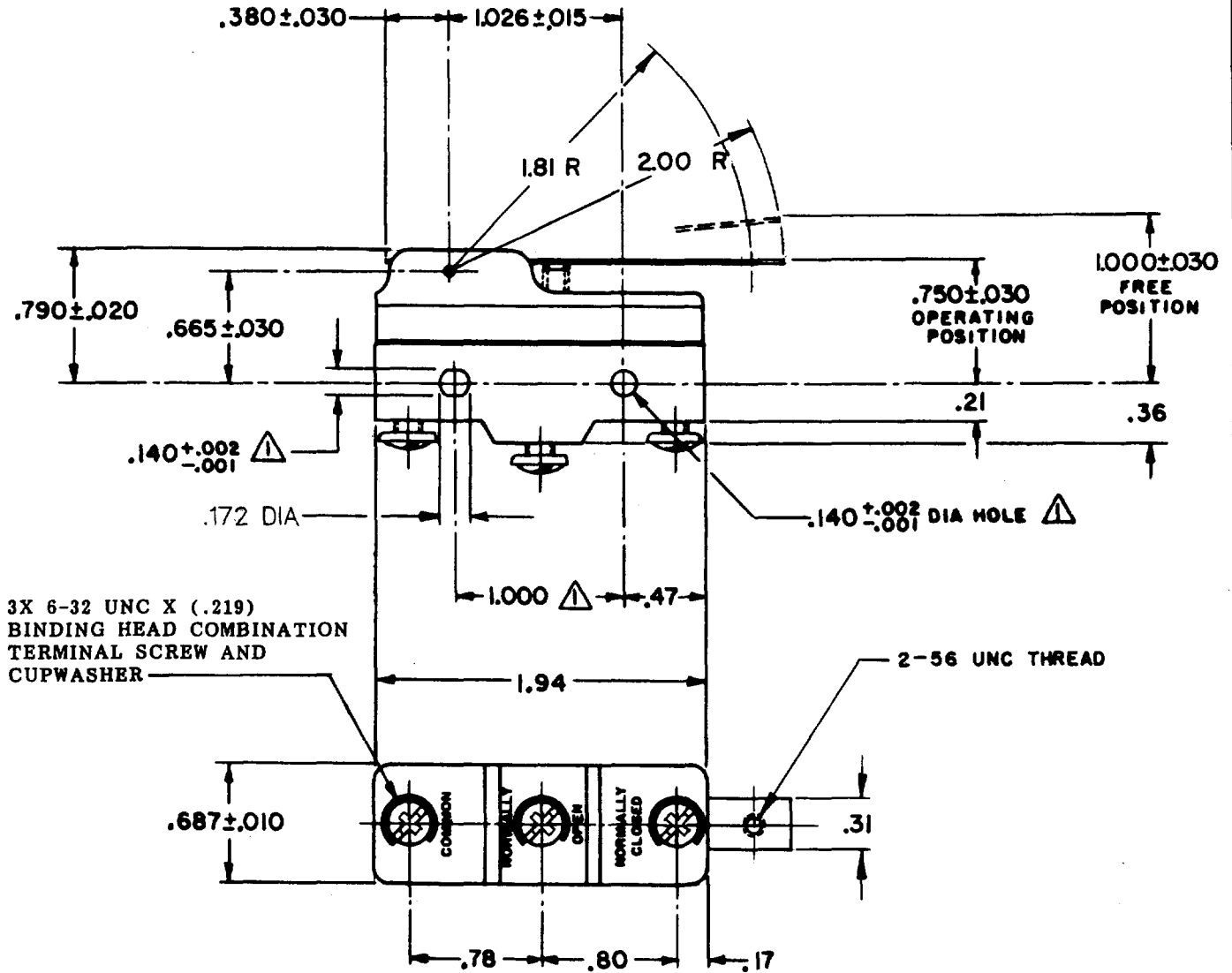
SR 11770

RELEASE NO.

CHECK

REVISIONS

A	SR 11770	15 MAY 64
M B F		
29 OCT 64		
B	CO 34308	15 MAY 64
DAW		
18 SEP 73		
C	CO 73287-J	15 MAY 64
JAL		
22 NOV 93		
D	CO 77589	15 MAY 64
ISM		
29 MAR 94		
E	CO93346	15 MAY 64
DLT		
16 SEP 98		
F	0017978	15 MAY 64
LKM		
20 FEB 06		



NOTE
 MOUNTING HOLES WILL ACCEPT PINS OR SCREWS
 OF .139 MAX DIA ON 1.000±.002 CENTERS

THIS DRAWING COVERS A PROPRIETARY ITEM AND IS THE PROPERTY OF MICRO SWITCH, A DIVISION OF MINNEAPOLIS-HONEYWELL REGULATOR CO. THIS DRAWING IS NOT TO BE COPIED OR USED WITHOUT THE APPROVAL OF MICRO SWITCH.

CHARACTERISTICS	ELECTRICAL DATA	SCALE FULL	
OPERATING FORCE ----- 3 1/2 OZ MAX	CONTACT ARRANGEMENT S P D T	DO NOT SCALE PRINT	
RELEASE FORCE ----- 3/4 OZ MIN	-L96- 15A-125, 250, OR 480 VAC 1/2 A-125 VDC; 1/4 A-250 VDC 1/8 HP-125 VAC; 1/4 HP-250 VAC -L288- -L315- -L306-	UNLESS OTHERWISE NOTED	
DIFFERENTIAL TRAVEL ----- .010 - .060		CE 16A 250V ~ T85 5E4	DIMENSIONS ARE IN INCHES
OVERTRAVEL ----- .172 MIN		TOLERANCES ARE: ONE PLACE (.0) ±.030 TWO PLACE (.00) ±.015 THREE PLACE (.000) ±.005 ANGLES ±	
		WEIGHT .073 LB	

FORMTEK
FO-80378

DRAWN
M B F 15 MAY 64 CHECK DAW