

MICRO SWITCH

FREEPORT ILLINOIS, U.S.A
A DIVISION OF HONEYWELL
FED. MFG. CODE 91929

SWITCH - BASIC

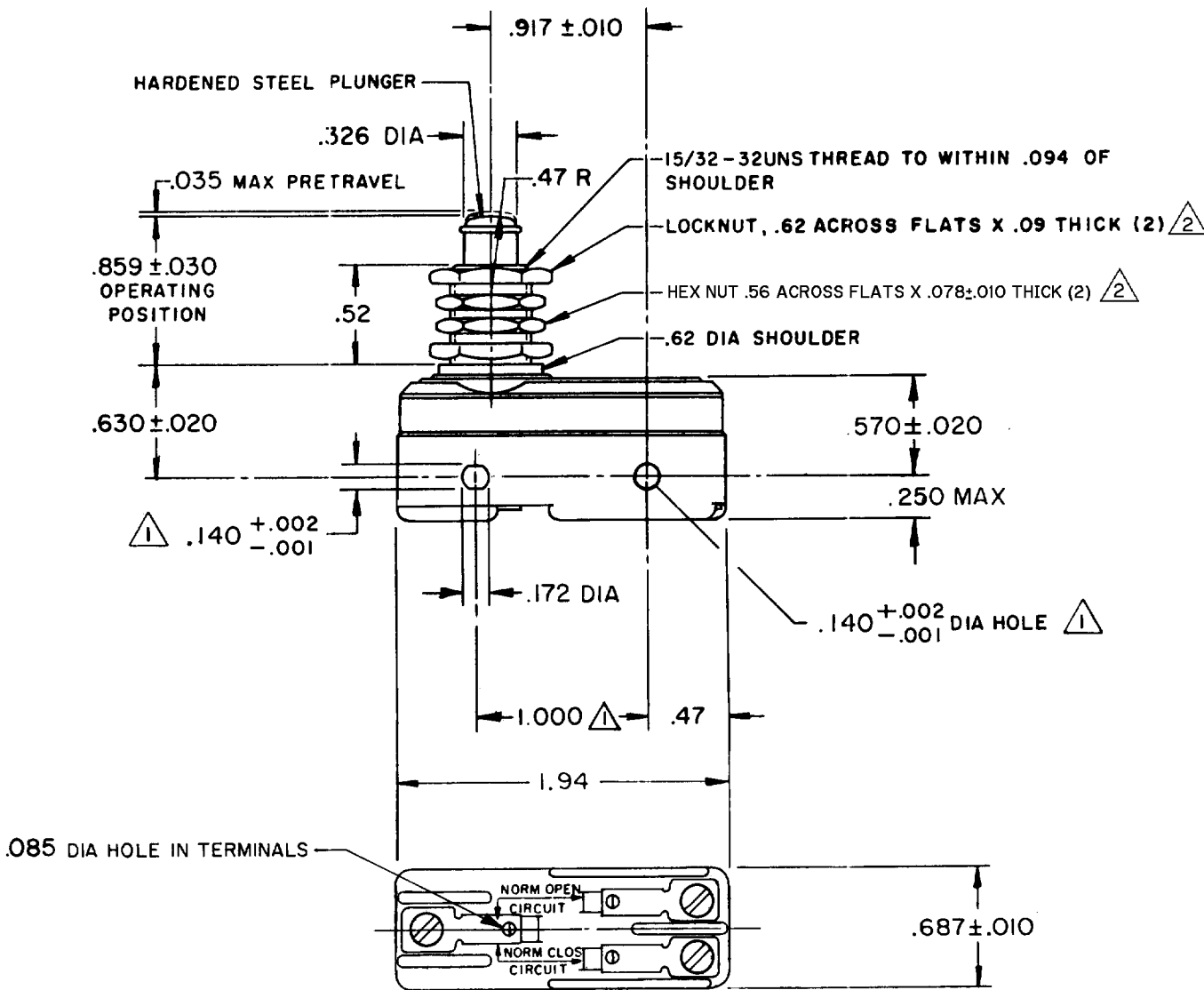
CATALOG LISTING

BZ-2RQ1331

BZ-2RQ1331
 PAGE 1 OF 1
M
 DRAWING NUMBER
6
 ISSUE
 REVISIONS

A	CO 58037	SMA	1 OCT 85
B	CO 77591	DAW	22 JUN 94
C	CO-82133	CSL	31 JUL 96
D	CO93346	DLT	10 SEP 98
E	CO-94212-C	DLT	17 SEP 99

 CHECK
 18 AUG 80
 CHECK CEB
 80
 AUG 15
 DRAWN
FORMTEK
 FO-52848-A
 J A P
 RELEASE NO. PR-9285
 REPLACES



- NOTES**
- ① MOUNTING HOLES WILL ACCEPT PINS OR SCREWS OF .139 MAX DIA ON 1.000±.002 CENTERS
 - ② HARDWARE FURNISHED UNASSEMBLED

THIS DRAWING COVERS A PROPRIETARY ITEM AND IS THE PROPERTY OF MICRO SWITCH, A DIVISION OF HONEYWELL. THIS DRAWING IS NOT TO BE COPIED OR USED WITHOUT THE APPROVAL OF MICRO SWITCH. THIRD ANGLE PROJECTION

CHARACTERISTICS	ELECTRICAL DATA	SCALE FULL	
		DO NOT SCALE PRINT	
OPERATING FORCE - - - - - 9-13 OZ	CONTACT ARRANGEMENT S P D T	TOLERANCES	
RELEASE FORCE - - - - - 4 OZ MIN	UL LISTED-FILE E12252	APPLY TO DESIGN UNITS. CONVERSIONS ARE ONLY FOR REFERENCE. UNLESS NOTED, TOLERANCES ARE ±	
DIFFERENTIAL TRAVEL - - .0004 - .0020	CODE L96 15A-125, 250 OR 480 VAC	DIM. mm	TOL. mm/in
OVERTRAVEL - - - - - .219 MIN	1/8 HP-125 VAC; 1/4 HP-250 VAC	NO PLACES X	1/64
	1/2 A-125 VDC; 1/4 A-250 VDC	TWO PLACES X,X	0.4/0.016
	L288	THREE PLACES X,X,X	0.15/0.006
	L299	ANGLES	X X 0.8/0.03
	L306		X XX 0.38/0.015
	CE ⓓ Ⓢ		X XXX 0.15/0.006
	16A 250V ~ T85 5E4	DESIGN UNITS	SI METRIC <input type="checkbox"/>
			US CUSTOMARY <input checked="" type="checkbox"/>
		WEIGHT .081 LB	