

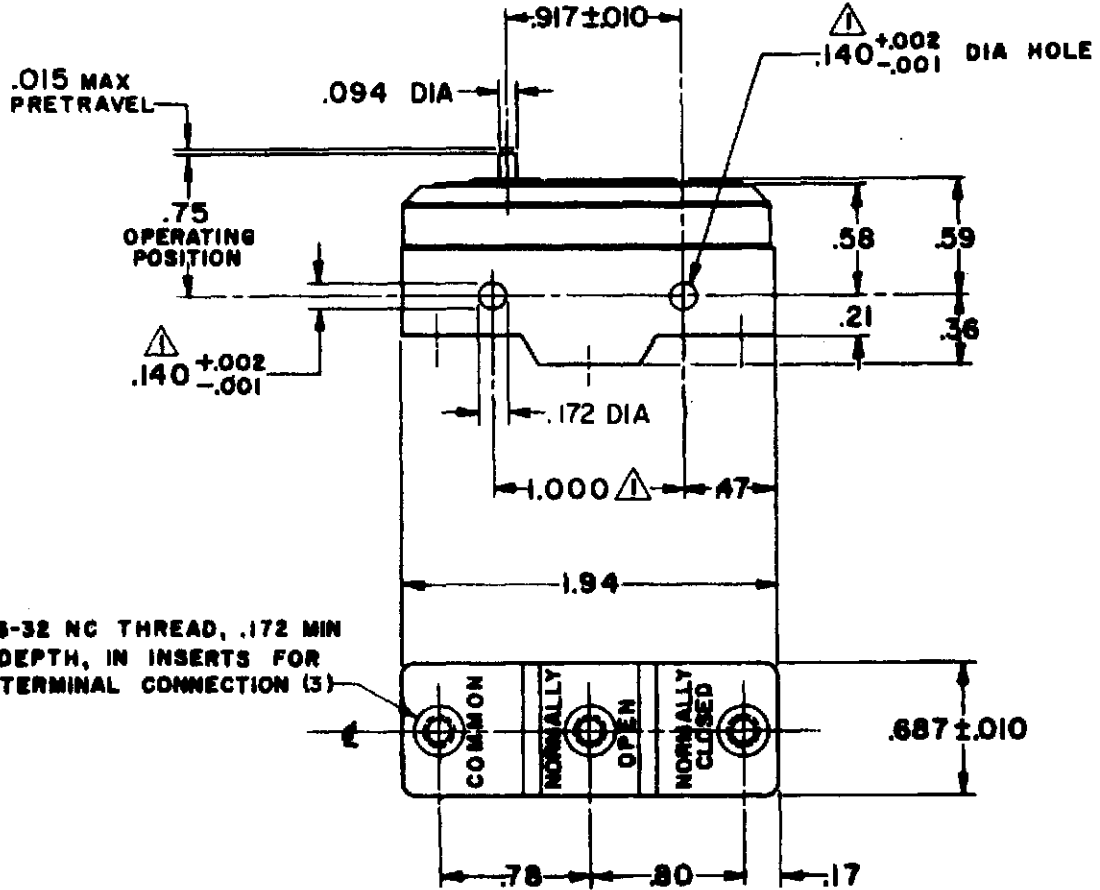
(M) BZ-2R73-A21
 ISSUE 1 OF 1
 RELEASE NO.
 CHECK
 J A F 17 JUN 98
 CHECK
 C C K 17 JUN 98
 DRAWN
 FORMTEK

CATALOG LISTING
BZ-2R73-A21
 PAGE 1 OF 1
M
 ISSUE 9

MICRO SWITCH
 a Honeywell Division
 FED. MFG. CODE 91929

SWITCH-BASIC

CATALOG LISTING
BZ-2R73-A21
AGQ7500



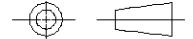
6-32 NC THREAD, .172 MIN DEPTH, IN INSERTS FOR TERMINAL CONNECTION (3)

NOTES

- ▲ MOUNTING HOLES WILL ACCEPT PINS OR SCREWS OF .139 MAX DIA ON 1.000±.002 CENTERS
- 2 - 6-32 UNC X .219 REF BINDING HEAD COMBINATION TERMINAL SCREW (3), FURNISHED UNASSEMBLED

THIS DRAWING COVERS A PROPRIETARY ITEM AND IS THE PROPERTY OF MICRO SWITCH, A DIVISION OF HONEYWELL. THIS DRAWING IS NOT TO BE COPIED OR USED WITHOUT THE APPROVAL OF MICRO SWITCH.

THIRD ANGLE PROJECTION



CHARACTERISTICS

OPERATING FORCE - - - - - 284 - 397 GR
RELEASE FORCE - - - - - 113 GR MIN
DIFFERENTIAL TRAVEL - - - .0004 - .002
OVERTRAVEL - - - - - .005 MIN

ELECTRICAL DATA

CONTACT ARRANGEMENT

L96
 15A 125, 250 OR 480 VAC
 1/8HP 125 VAC, 1/4HP 250 VAC
 1/2A 125 VDC, 1/4A 250 VDC
 L288
 L315
 L306
 CE SF 06 RU
 16A 250V ~ T85 5E4

SCALE FULL

DO NOT SCALE PRINT

UNLESS OTHERWISE SPECIFIED TOLERANCES ARE
 ONE PLACE (.0) ±.030
 TWO PLACE (.00) ±.015
 THREE PLACE (.000) ±.005
 ANGLES ±

WEIGHT