

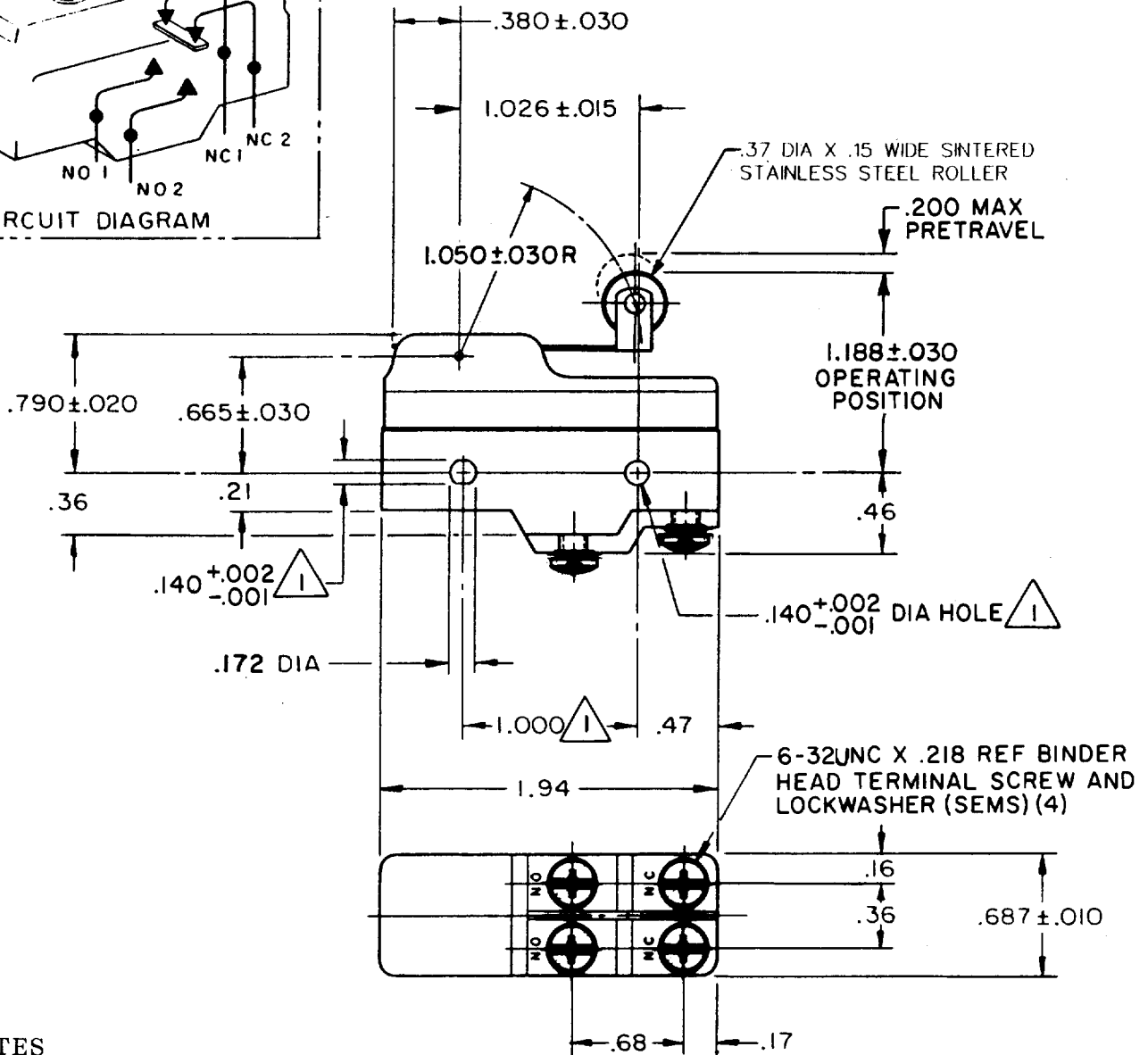
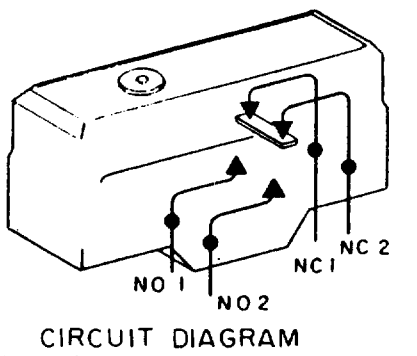
MICRO SWITCH

FREEPORT ILLINOIS, U.S.A
A DIVISION OF HONEYWELL INC.
FED. MFG. CODE 91929

SWITCH - BASIC

CATALOG LISTING

BZ-2AW84223T



NOTES

- 1 MOUNTING HOLES WILL ACCEPT PINS OR SCREWS OF .139 MAX DIA ON 1.000 ± .002 CENTERS
- 2 - SUITABLE ONLY FOR APPLICATIONS IMPARTING A RAPID STROKE TO THE SWITCH PLUNGER

THIS DRAWING COVERS A PROPRIETARY ITEM AND IS THE PROPERTY OF MICRO SWITCH, A DIVISION OF MINNEAPOLIS-HONEYWELL REGULATOR CO. THIS DRAWING IS NOT TO BE COPIED OR USED WITHOUT THE APPROVAL OF MICRO SWITCH.

CHARACTERISTICS

OPERATING FORCE ----- 3 1/2 OZ MAX
RELEASE FORCE ----- 1/4 OZ MIN
DIFFERENTIAL TRAVEL ----- .025 MAX
OVERTRAVEL ----- .094 MIN

ELECTRICAL DATA

CONTACT ARRANGEMENT
SEE CIRCUIT DIAGRAM

L73
15A 125, 250 OR 480 VAC
1A 125 VDC, 0.5A 250 VDC
1/4 HP 125 VAC, 1/2 HP 250 VAC



SCALE FULL

DO NOT SCALE PRINT

UNLESS OTHERWISE SPECIFIED
DIMENSIONS ARE IN INCHES
TOLERANCES ARE:
ONE PLACE (.0) ± .030
TWO PLACE (.00) ± .015
THREE PLACE (.000) ± .005
ANGLES ±

WEIGHT

BZ-2AW84223T

M

DRAWING NUMBER

X

X

ISSUE

4

REVISIONS

A	CO-69351-D	JWB	18 JUL 91
B	CO-70184-G	GJW	10 MAR 92
C	CO-75204B	DAW	1 FEB 94

REPLACES X92122-BZ

RELEASE NO. PR-18090

CHECK

CHECK

DCS

CHECK

26 MAR 90

CHECK

21 MAR 90

FO-82880-GOI

DRAWN

BAB