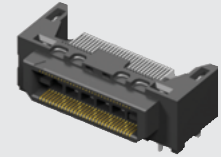


BTH-090-01-F-D-A



BTH SERIES

(0,50 mm) .0197"

BASIC BLADE & BEAM HEADER

SPECIFICATIONS

For complete specifications and recommended PCB layouts see www.samtec.com?BTH

Insulator Material: Black LCP

Contact Material: Phosphor Bronze

Plating: Au or Sn over 50µ" (1,27 µm) Ni

Current Rating: 2.0 A per pin (1 pin powered per row)

Flammability Rating: UL 94 VO

Operating Temp Range: -55°C to +125°C

Voltage Rating: 275 VAC

Max Cycles: 100

RoHS Compliant: Yes

Processing:

Lead-Free Solderable: Yes

SMT Lead Coplanarity:

Vertical= (0,10 mm) .004" max (030-090)

Vertical= (0,15 mm) .006" max (120-150)

Right Angle= (0,15 mm) .006" max (030-090)

Board Stacking:

For applications requiring more than two connectors per board or 90 positions or higher, contact ipg@samtec.com

RECOGNITIONS

For complete scope of recognitions see www.samtec.com/quality



FILE NO. E111594

MATED HEIGHT

LEAD STYLE	MATED HEIGHT*
-01	(5,00) .197

*Processing conditions will affect mated height.

ALSO AVAILABLE (MOQ Required)

- 30µ" (0,76 µm) Gold
- Edge Mount Capability
- 8 mm, 11 mm, 16 mm, 19 mm and 22 mm Stack Height (Caution: Some automatic placement/inspection machines may have component height restrictions. Please consult machinery specifications.) (11 mm, 16 mm, 19 mm and 22 mm not available with 50 positions)

Contact Samtec.

Note: Some lengths, styles and options are non-standard, non-returnable.

BTH — **NO. OF POSITIONS PER ROW** — **01** — **PLATING OPTION** — **D** — **A** — **OTHER OPTION**

Mates with: **BSH**

-030, -050, -060, -090, -120, -150

-F
= Gold Flash on contact, Matte Tin on tail

-L
= 10µ" (0,25 µm) Gold on contact, Matte Tin on tail

-C*
= Electro-Polished Selective 50µ" (1,27 µm) min Au over 150µ" (3,81 µm) Ni on Signal Pins in contact area, Matte Tin over 50µ" (1,27 µm) min Ni on all solder tails

-K
= (7,00 mm) .276" DIA Polyimide Film Pick & Place Pad

-TR
= Tape & Reel (120 positions maximum)

*Note: -C Plating passes 10 year MFG testing



BTH — **NO. OF POSITIONS PER ROW** — **01** — **PLATING OPTION** — **D** — **RA** — **WT** — **OTHER OPTION**

Mates with: **BSH**

-030, -060, -090

-F
= Gold Flash on contact, Matte Tin on tail

-L
= 10µ" (0,25 µm) Gold on contact, Matte Tin on tail

-K
= (7,00 mm) .276" DIA Polyimide Film Pick & Place Pad