

Type BLC-13 Fuse Block For 5 x 20mm Fuses



www.optifuse.com (619)-593-5050

Fuse Style: 5 x 20mm Fuses

Material:

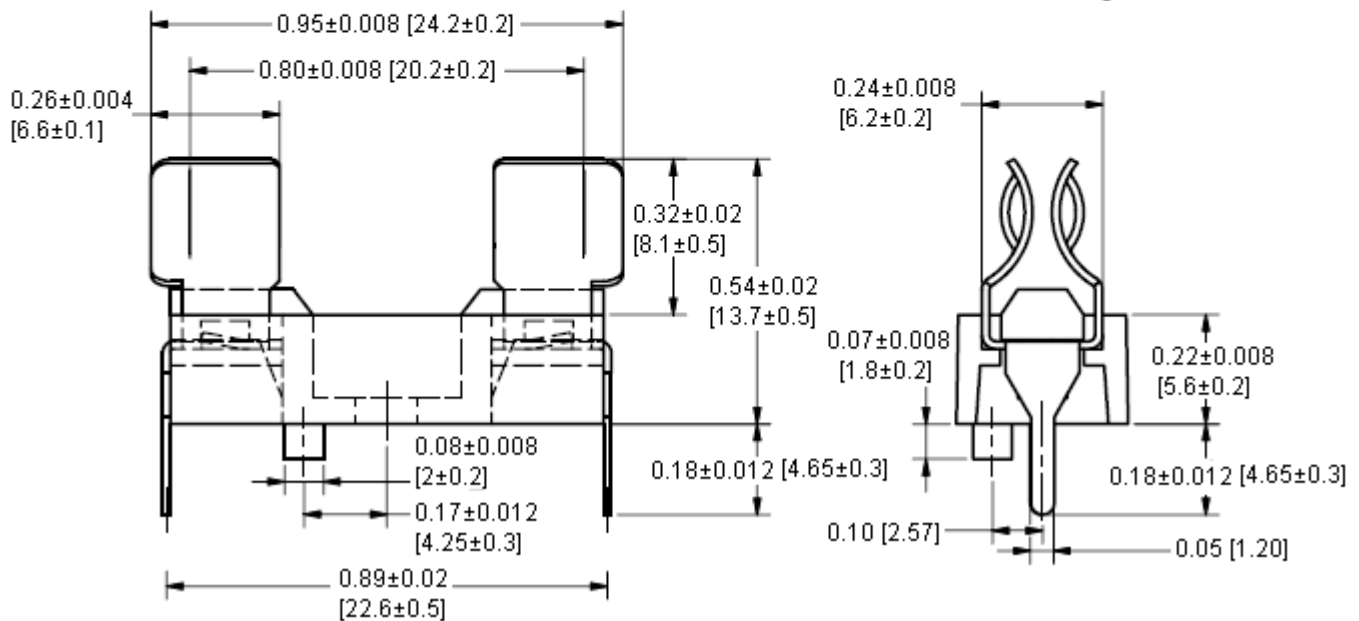
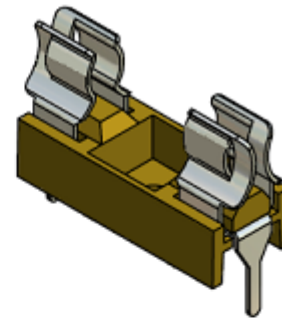
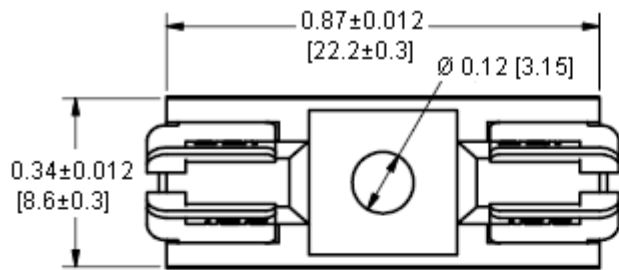
Body: Nylon, Glass fiber (UL Flame: 94V-1)

Terminal: Brass Tin plated

Mounting: PCB

Electrical: 6.3A 250V

Product Dimensions: Inches [mm]



Warning:



-Operation beyond the specified maximum ratings or improper use may result in damage and possible electrical arcing and/or flame.

-Avoid contact of Fuse Block with chemical solvent. Prolonged contact will damage the device performance.