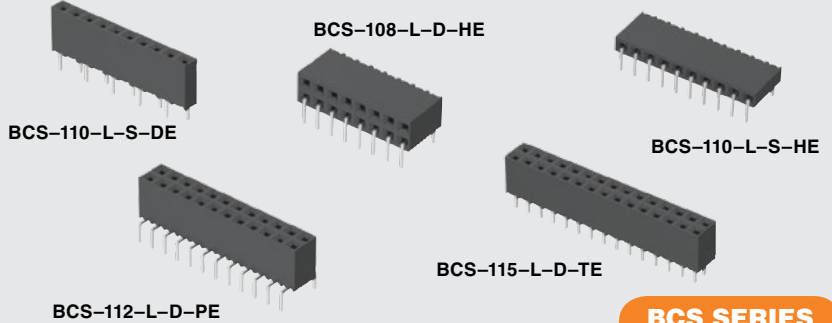




(2.54 mm) .100"



BCS SERIES

TIGER CLAW™ PASS-THROUGH SOCKET

Mates with:

TSW, MTSW, HTSW, HMTSW, TSS, ZSS, DW, EW, ZW, HW, TSM, MTLW, PHT

SPECIFICATIONS

For complete specifications see www.samtec.com?BCS

Insulator Material: Black Liquid Crystal Polymer

Contact Material: Phosphor Bronze

Plating:

Au or Sn over 50 μm (1.27 μm) Ni

Current Rating (BCS/TSW): 4.6 A per pin (2 pins powered)

Voltage Rating: 475 VAC

(-TE/-DE/-PE mated with TSM) 450 VAC

(-HE mated with TSW)

Operating Temp Range: -55 °C to +125 °C

Insertion Depth: (4.34 mm) .171" to (7.24 mm) .285" from top, (5.64 mm) .222" plus board thickness minimum from bottom.

-HE is (4.34 mm) .171" to (6.35 mm) .250"

RoHS Compliant: Yes

Lead-Free Solderable: Yes

Yes

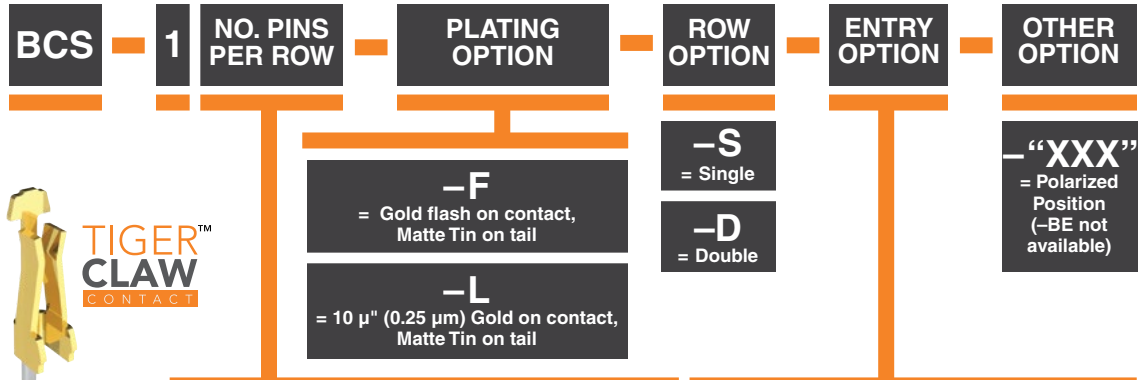
RECOGNITIONS

For complete scope of recognitions see www.samtec.com/quality



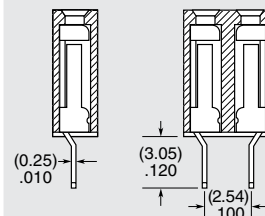
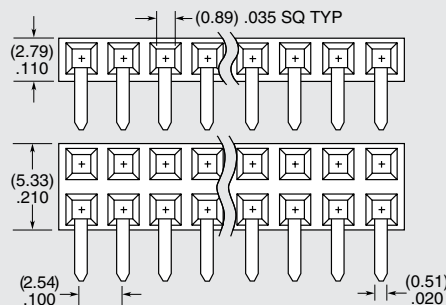
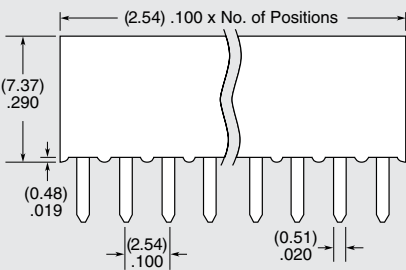
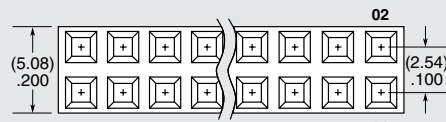
ALSO AVAILABLE (MOQ Required)

- Other platings Contact Samtec.

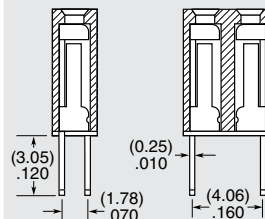


TIGER CLAW CONTACT

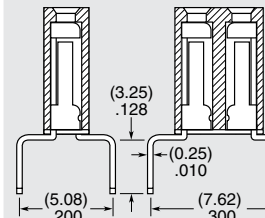
01 thru 50



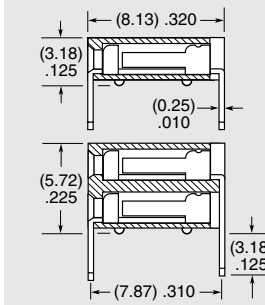
-TE
= Top Entry



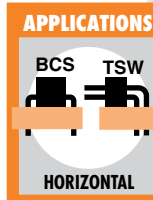
-DE
= Top Entry (For Bottom Entry specify -DE-BE) Cannot be used with plated through-holes



-PE
= Pass-through Entry (For Bottom Entry specify -PE-BE)



-HE
= Horizontal Entry



Note: Some lengths, styles and options are non-standard, non-returnable.

Due to technical progress, all designs, specifications and components are subject to change without notice.

WWW.SAMTEC.COM

All parts within this catalog are built to Samtec's specifications.

Customer specific requirements must be approved by Samtec and identified in a Samtec customer-specific drawing to apply.