

Printed-circuit board connector - BCH-508HS- 2 GY - 5433668

Please be informed that the data shown in this PDF Document is generated from our Online Catalog. Please find the complete data in the user's documentation. Our General Terms of Use for Downloads are valid (<http://phoenixcontact.com/download>)

Header, Nominal current: 12 A, Rated voltage (III/2): 320 V, Number of positions: 2, Pitch: 5.08 mm, Color: signal grey, Contact surface: Tin, Mounting: Wave soldering



The figure shows a 5-pos. version of the product



Key Commercial Data

Packing unit	1 pc
Minimum order quantity	100 pc
Weight per Piece (excluding packing)	1.0 g
Custom tariff number	85366990
Country of origin	China

Technical data

Dimensions

Length	12 mm
Pitch	5.08 mm
Dimension a	5.08 mm
Length of the solder pin	3.5 mm
Pin dimensions	1 x 1 mm
Hole diameter	1.4 mm

General

Range of articles	BCH-HS
Insulating material group	I
Rated surge voltage (III/3)	4 kV
Rated surge voltage (III/2)	4 kV
Rated surge voltage (II/2)	4 kV

Printed-circuit board connector - BCH-508HS- 2 GY - 5433668

Technical data

General

Rated voltage (III/3)	250 V
Rated voltage (III/2)	320 V
Rated voltage (II/2)	400 V
Connection in acc. with standard	EN-VDE
Nominal current I _N	12 A
Maximum load current	12 A
Insulating material	PA
Flammability rating according to UL 94	V0
Color	signal grey
Number of positions	2

Standards and Regulations

Connection in acc. with standard	EN-VDE
	CUL
Flammability rating according to UL 94	V0

Classifications

eCl@ss

eCl@ss 4.0	272607xx
eCl@ss 4.1	27260701
eCl@ss 5.0	27260701
eCl@ss 5.1	27260701
eCl@ss 6.0	27261101
eCl@ss 7.0	27440401
eCl@ss 8.0	27440402
eCl@ss 9.0	27440402

ETIM

ETIM 3.0	EC001121
ETIM 4.0	EC002637
ETIM 5.0	EC002637

UNSPSC

UNSPSC 6.01	30211801
UNSPSC 7.0901	39121432
UNSPSC 11	39121432
UNSPSC 12.01	39121409

Printed-circuit board connector - BCH-508HS- 2 GY - 5433668

Classifications

UNSPSC

UNSPSC 13.2	39121432
-------------	----------

Approvals

Approvals

Approvals

UL Recognized / cUL Recognized / VDE Gutachten mit Fertigungsüberwachung / IEC60947-5-1 / IEC60947-5-2 / IEC60947-5-3 / IEC60947-5-4 / IEC60947-5-5 / IEC60947-5-6 / IEC60947-5-7 / IEC60947-5-8 / IEC60947-5-9 / IEC60947-5-10 / IEC60947-5-11 / IEC60947-5-12 / IEC60947-5-13 / IEC60947-5-14 / IEC60947-5-15 / IEC60947-5-16 / IEC60947-5-17 / IEC60947-5-18 / IEC60947-5-19 / IEC60947-5-20 / IEC60947-5-21 / IEC60947-5-22 / IEC60947-5-23 / IEC60947-5-24 / IEC60947-5-25 / IEC60947-5-26 / IEC60947-5-27 / IEC60947-5-28 / IEC60947-5-29 / IEC60947-5-30 / IEC60947-5-31 / IEC60947-5-32 / IEC60947-5-33 / IEC60947-5-34 / IEC60947-5-35 / IEC60947-5-36 / IEC60947-5-37 / IEC60947-5-38 / IEC60947-5-39 / IEC60947-5-40 / IEC60947-5-41 / IEC60947-5-42 / IEC60947-5-43 / IEC60947-5-44 / IEC60947-5-45 / IEC60947-5-46 / IEC60947-5-47 / IEC60947-5-48 / IEC60947-5-49 / IEC60947-5-50 / IEC60947-5-51 / IEC60947-5-52 / IEC60947-5-53 / IEC60947-5-54 / IEC60947-5-55 / IEC60947-5-56 / IEC60947-5-57 / IEC60947-5-58 / IEC60947-5-59 / IEC60947-5-60 / IEC60947-5-61 / IEC60947-5-62 / IEC60947-5-63 / IEC60947-5-64 / IEC60947-5-65 / IEC60947-5-66 / IEC60947-5-67 / IEC60947-5-68 / IEC60947-5-69 / IEC60947-5-70 / IEC60947-5-71 / IEC60947-5-72 / IEC60947-5-73 / IEC60947-5-74 / IEC60947-5-75 / IEC60947-5-76 / IEC60947-5-77 / IEC60947-5-78 / IEC60947-5-79 / IEC60947-5-80 / IEC60947-5-81 / IEC60947-5-82 / IEC60947-5-83 / IEC60947-5-84 / IEC60947-5-85 / IEC60947-5-86 / IEC60947-5-87 / IEC60947-5-88 / IEC60947-5-89 / IEC60947-5-90 / IEC60947-5-91 / IEC60947-5-92 / IEC60947-5-93 / IEC60947-5-94 / IEC60947-5-95 / IEC60947-5-96 / IEC60947-5-97 / IEC60947-5-98 / IEC60947-5-99 / IEC60947-5-100

Ex Approvals

Approvals submitted

Approval details

UL Recognized		
	B	D
Nominal current I _N	15 A	15 A
Nominal voltage U _N	300 V	150 V

cUL Recognized		
	B	D
Nominal current I _N	15 A	15 A
Nominal voltage U _N	300 V	150 V

VDE Gutachten mit Fertigungsüberwachung


IECEE CB Scheme

Printed-circuit board connector - BCH-508HS- 2 GY - 5433668

Approvals

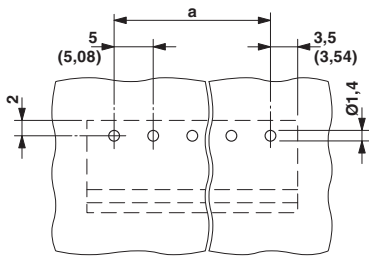
EAC

EAC

cULus Recognized 

Drawings

Drilling diagram



Dimensional drawing

