

MICRO SWITCH

FREERPORT ILLINOIS, U.S.A
A DIVISION OF HONEYWELL
FED. MFG. CODE 91929

SWITCH - BASIC

CATALOG LISTING
BA-2RV2223-A2

ABS5525

M BA-2RV2223-A2
PAGE 1 OF 1

DRAWING NUMBER

ISSUE

8

REPLACES X69093-BA

RELEASE NO. PR-7789

CHECK

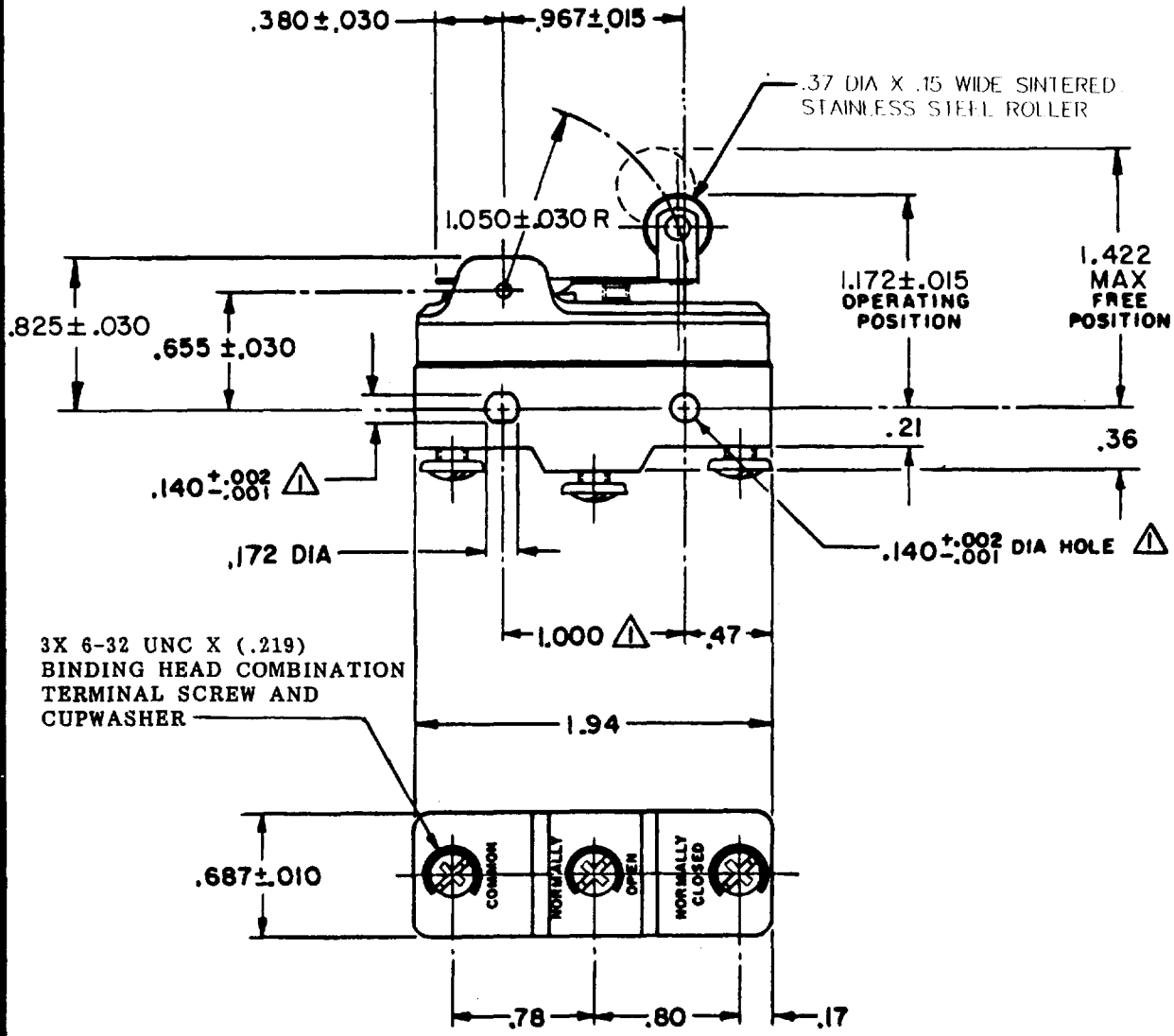
REVISIONS

CHECK

CHECK

CHECK

A	CO-70184-G	17 FEB 06
G	J W	7 MAR 92
B	CO-73287	1 MAY 92
C	CO-73287-J	22 NOV 93
D	CO-75204B	1 FEB 94
E	CO-77890	9 JUN 94
F	CO-093346	26 AUG 98
G	0018388	17 FEB 06



NOTE -
▲ - MOUNTING HOLES WILL ACCEPT PINS OR SCREWS OF .139 MAX DIA ON 1.000 ± .002 CENTERS

THIS DRAWING COVERS A PROPRIETARY ITEM AND IS THE PROPERTY OF MICRO SWITCH, A DIVISION OF HONEYWELL. THIS DRAWING IS NOT TO BE COPIED OR USED WITHOUT THE APPROVAL OF MICRO SWITCH.

THIRD ANGLE PROJECTION

CHARACTERISTICS
OPERATING FORCE ----- 8 OZ MAX
RELEASE FORCE ----- 1 1/2 OZ MIN
DIFFERENTIAL TRAVEL ----- .045 MAX
OVERTRAVEL ----- .030 MIN

ELECTRICAL DATA
CONTACT ARRANGEMENT S P D T
20A-125, 250 OR 480 VAC; 10A-125 VAC "L" 1HP-125 VAC; 2HP-250 VAC CODE L23 1/2A-125 VDC; 1/4A-250 VDC L288 L308 L315
20(3)A 250V ~ T85 5E4

SCALE FULL																								
DO NOT SCALE PRINT																								
TOLERANCES																								
APPLY TO DESIGN UNITS. CONVERSIONS ARE ONLY FOR REFERENCE. UNLESS NOTED, TOLERANCES ARE 2																								
<table border="1"> <tr> <th>DES. UNITS</th> <th>TOL.</th> <th>DES. UNITS</th> <th>TOL.</th> </tr> <tr> <td>NO PLACES</td> <td>± 1/64</td> <td>IN</td> <td>± 0.0150</td> </tr> <tr> <td>ONE PLACE</td> <td>± 1/32</td> <td>IN</td> <td>± 0.0075</td> </tr> <tr> <td>TWO PLACES</td> <td>± 1/64</td> <td>IN</td> <td>± 0.0038</td> </tr> <tr> <td>THREE PLACES</td> <td>± 1/128</td> <td>IN</td> <td>± 0.0019</td> </tr> <tr> <td>HOLES</td> <td></td> <td>IN</td> <td></td> </tr> </table>	DES. UNITS	TOL.	DES. UNITS	TOL.	NO PLACES	± 1/64	IN	± 0.0150	ONE PLACE	± 1/32	IN	± 0.0075	TWO PLACES	± 1/64	IN	± 0.0038	THREE PLACES	± 1/128	IN	± 0.0019	HOLES		IN	
DES. UNITS	TOL.	DES. UNITS	TOL.																					
NO PLACES	± 1/64	IN	± 0.0150																					
ONE PLACE	± 1/32	IN	± 0.0075																					
TWO PLACES	± 1/64	IN	± 0.0038																					
THREE PLACES	± 1/128	IN	± 0.0019																					
HOLES		IN																						
DESIGN UNITS <input type="checkbox"/> METRIC <input type="checkbox"/> US CUSTOMARY <input checked="" type="checkbox"/>																								
WEIGHT																								

FORMTEK
FO-52848-A
DRAWN

J A P 23 MAR 79 CHECK D J W