

# MICRO SWITCH

FREEPORT ILLINOIS, U.S.A  
A DIVISION OF HONEYWELL  
FED. MFG. CODE 9 1929

# SWITCH-BASIC

CATALOG LISTING

BA-1RV543510 -A2

BA-1RV543510-A2

PAGE 1 OF 1

REPLACES X 71635-BA

RELEASE NO. PR-11436T

**M**

DRAWING NUMBER

4

ISSUE

CHECK

REVISIONS

A	CO-73287-J	JAL	22 NOV 93
B	CO-77590	SAD	8 JUN 94
C	CO93346	DLT	31 AUG 98

CHECK

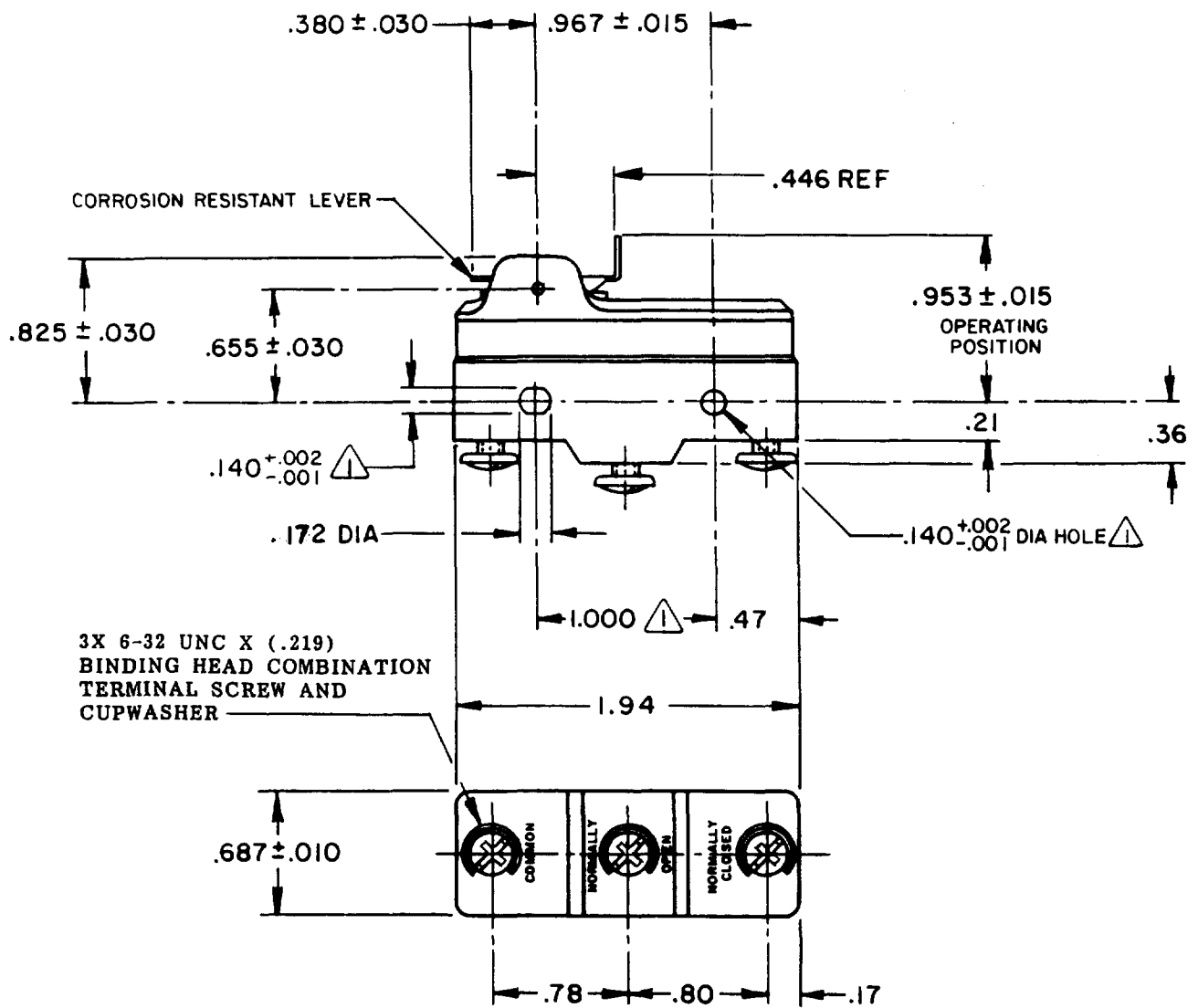
10 AUG 82

C E B

82 AUG 82

FORMTEK  
FO-52848-A

DRAWN



**NOTE**  
MOUNTING HOLES WILL ACCEPT PINS OR SCREWS OF .139 MAX DIA ON 1.000 ± .002 CENTERS

THIS DRAWING COVERS A PROPRIETARY ITEM AND IS THE PROPERTY OF MICRO SWITCH, A DIVISION OF HONEYWELL. THIS DRAWING IS NOT TO BE COPIED OR USED WITHOUT THE APPROVAL OF MICRO SWITCH.

THIRD ANGLE PROJECTION

**CHARACTERISTICS**

OPERATING FORCE ----- 5 OZ MAX  
RELEASE FORCE ----- 1 1/2 OZ MIN  
PRETRAVEL ----- .109 MAX  
DIFFERENTIAL TRAVEL ----- .011 MAX  
OVERTRAVEL ----- .020 MIN

**ELECTRICAL DATA**

CONTACT ARRANGEMENT  
S P D T

CODE L65  
15A-125, 250 OR 480 VAC  
1/2HP-125 VAC; 1HP-250 VAC

L288  
L299  
L306

CE D UL  
16A 250V ~ T85 5E4

SCALE FULL

DO NOT SCALE PRINT

TOLERANCES

APPLY TO DESIGN UNITS. CONVERSIONS ARE ONLY FOR REFERENCE. UNLESS NOTED, TOLERANCES ARE 2

	DIM.	TOL.	DIM.	TOL.
	mm	mm/in	in	mm/in
NO PLACES	X	17.00	X X	0.01/00
ONE PLACE	X,X	0.41/010	X,X X	0.38/.010
TWO PLACES	X,X,X	0.10/.005	X,X X,X	0.38/.010
THREE PLACES	X,X,X,X	0.10/.005	X,X X,X,X	0.10/.005
ANGLES				

DESIGN UNITS  IN METRIC  US CUSTOMARY

WEIGHT .063 LB