

# HellermannTyton

*Cable Management Products*

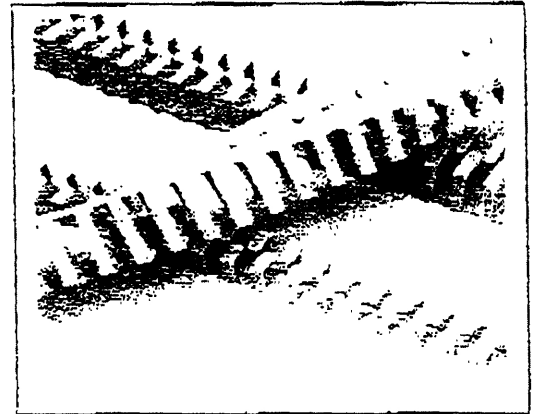
## NEW PRODUCT INFORMATION

### KANALFLEX

Kanalflex is a new patented design for panel trunking, increasing the number of cables that can be routed via a small area.

#### **Specification Details:**

- Manufactured from a Thermoplastic Polymer
- Colour RAL 7040 (Grey)
- Working Temperature  $-40^{\circ}\text{C}$  to  $+140^{\circ}\text{C}$
- Flame resistant to UL94 VO
- Dielectric constnt (ASSTM D2863)
- Available in half metre lengths
- Adhesive backed as standard
- Good resistance to UV rays and chemicals



#### **Product Details:**

Code	Description/Size	Pack Size	Discount Code
B0905	BK13A 12.5mm x 12.5mm	10 x 0.5mtr lengths	W
B0906	BK1616A 16mm x 16mm	10 x 0.5mtr lengths	W
B0907	BK2020A 20mm x 20mm	10 x 0.5mtr lengths	W
B0908	BK2525A 25mm x 25mm	10 x 0.5mtr lengths	W
B0909	BK3030A 30mm x 30mm	10 x 0.5mtr lengths	W
B0910	BK4040A 40mm x 40mm	10 x 0.5mtr lengths	W
B0911	BK5050A 50mm x 50mm	10 x 0.5mtr lengths	W

Wharf Approach  
Alenage, Walsall  
West Midlands WS3 8EX  
Tel: 01922 458151 (6 lines)  
Fax: 01922 743297 (Admin)  
01922 743053 (Sales)

e-mail: [sales@bowthorpe-hellermann.co.uk](mailto:sales@bowthorpe-hellermann.co.uk)  
Website: [www.bowthorpe-hellermann.co.uk](http://www.bowthorpe-hellermann.co.uk)

A BOWTHORPE company

Registered Office:  
Gadwick Road, Crawley  
West Sussex  
England

Reg. in England No. 470893