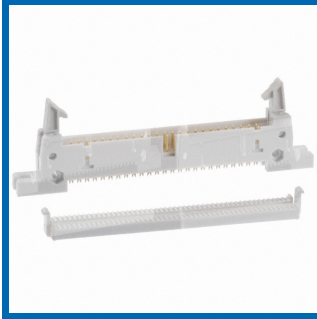


Product 30/36

[Previous](#)

[Product Listing](#)

[Next](#)



[larger image](#)

**IDC Header - Long Latch, Flange, 50 contacts**

Part Number: **AWH-50G-E232-IDC**

**More Information:**

**710** Units in Stock

[>> Contact AWSW](#)



[Product Specification sheet](#)

**Product Information:**

Previously known as: **AWH50G-E232-IDC-R**

**IDC Header - Long Latch/Flange type**

- **2.54mm pitch**
- **Grey**
- **50 contacts**



**Material:**

- Insulator material: PBT+30%G.F.(UL94V-0)
- Contact material: Brass
- Contact plating: 1µ" Au selective over Ni

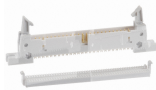
**Electrical:**

- Current Rating: 3.0A
- Withstand Voltage: 1,000V AC/minute
- Contact Resistance: 20mΩ Max.
- Insulation Resistance: 1,000MΩ Min.

**Environmental:**

- Operating and Storage Temperature: -40°C~+105°C
- Packing: Tray

**Recently Viewed**



[IDC Header - Long Latch, Flange, 50 contacts](#)

**Assmann WSW links**

[Assmann WSW components](#)  
[Assmann Germany](#)  
[Assmann Custom cables](#)  
[RoHS Compliance](#)  
[Product Change Notification](#)  
[End Of Life Notification](#)  
[Conflict Free Minerals Declaration](#)  
[Assmann mail](#)  
[Advanced Search](#)

