

# AV series

Security pushbutton switches •  
 Ø 19 mm • momentary NC/NO



## DISTINCTIVE FEATURES

Momentary NC/NO

Long life

Sealed to IP65 and IP69K



## ENVIRONMENTAL SPECIFICATIONS

- Front panel sealing : IP65 and IP69K according to IEC 60529
- Operating temperature : -20 °C to +85 °C (-4 °F to +185 °F)



## ELECTRICAL SPECIFICATIONS

- Max. current/voltage rating with resistive load :  
 5 A 250 VAC - 5 A 125 VAC - 6,000 cycles  
 5 A 15 VDC - 3 A 30 VDC - 50,000 cycles
- Initial contact resistance : 100 mΩ max.
- Insulation resistance : 1,000 mΩ min. at 500 VDC
- Dielectric strength : 2,000 Vrms 50 Hz min. between terminals and frame



## GENERAL SPECIFICATIONS

- Torque : 5 Nm min. - 14 Nm max. applied to nut
- Panel thickness : 1 (.039) to 9 mm (.354) max.
- Low level or mechanical life : 1,000,000 cycles



## MATERIALS

- Case : PA 6/6
- Contacts : silver
- Bushing : stainless steel (std)
- Actuator : stainless steel (std)

APEM products may be recycled at end-of-life for the re-claiming of valuable metal components.



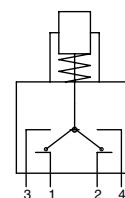
## MOUNTING

- Panel cut-out : Ø 19.2 mm (.755)
- Min. pitch for matrix mounting : 30 mm x 30 mm (1.181x1.181)

The company reserves the right to change specifications without notice.



## ELECTRICAL FUNCTIONS

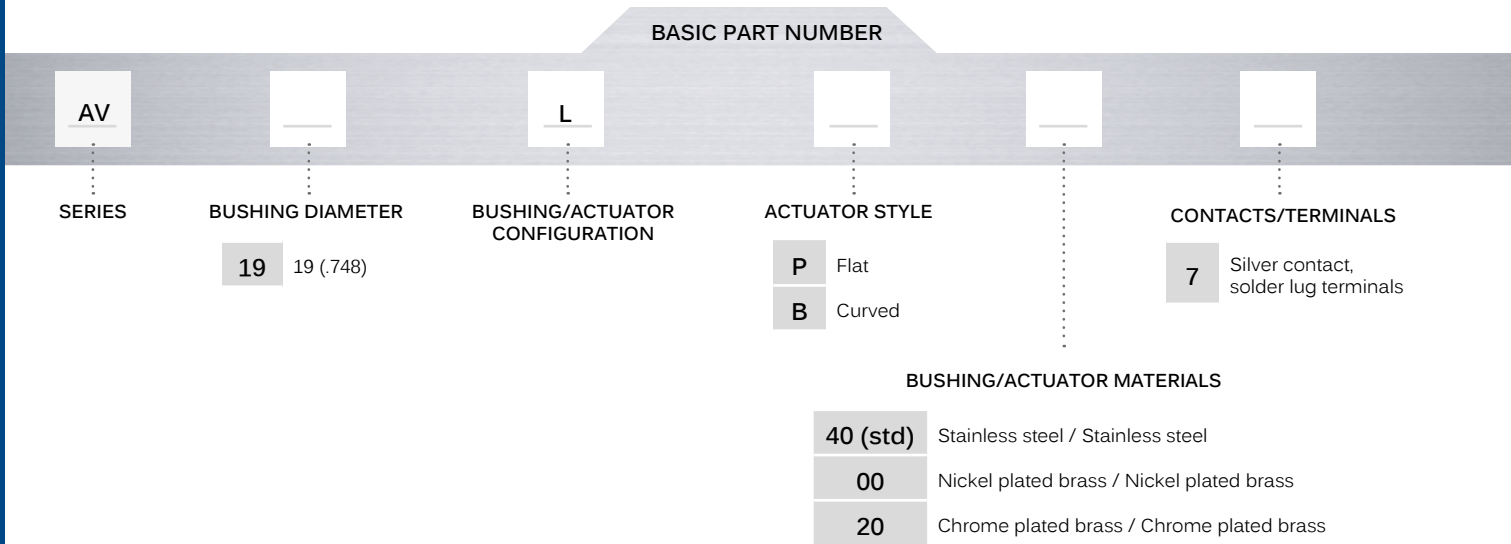


Combined NC/NO


# AV series

Security pushbutton switches • Ø 19 mm • momentary NC/NO

## BUILD YOUR PART NUMBER

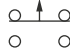


## ABOUT THIS SERIES

 **Mounting accessories:** standard hardware supplied : 1 hex nut and 1 O-ring. Standard and special hardware is presented in the "Hardware" section of website.

## SOLDER LUG TERMINALS



- Flat actuator  
AV19LP407 
- Curved actuator  
AV19LB407 