

## ASM01Y0164

SMT solderable spring contact, mounting on component side for direct insertion of solid wires or stranded wires with ferrule or SMT solderable spring contact, mounting on soldering side for direct insertion of components with pins.

### Technical Data

0.75 - 1.5 mm<sup>2</sup> 750 V / 13 A

Insulation co-ordination according to IEC 664-1

Protection category according to IEC 529

IP00

Min. insul. strip length

8 mm

Recommended pc board hole dia.

Ø 2 mm

The new spring contact from RIA CONNECT GmbH is a revolution in the world of connections.

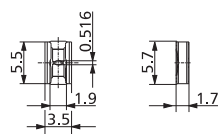
RIA CONNECT GmbH produces a connector for soldering on the PCB with very compact dimensions:

W x H x D: 3,5 x 1,7 x 5,1 mm.

This spring contact allows you to reduce to the minimum your hand soldering points in production and the construction allows the connection of pinned components & of single wires (0,75 – 1,5 mm<sup>2</sup>) or stranded wires with ferrules. The device is developed for SMT & ready for fully automated assembly lines. Delivery takes place in Tape on Reel. THR soldering by 290 °C during 90 seconds is also possible as the product does not contain any plastic parts. Resistance to vibrations was one of the main concerns during the development together with our customer issued from the automotive business. Furthermore, the component can be soldered either on the component or on the soldering side to give you a lot more possibilities according to your needs.

Dimensions in mm

1 mm = 0.0394 in.



### Part numbers (P/N)

(informations: page 25)

#### ASM01Y0164

P/N ASM01Y0164-0G16

15" Reel Mounting soldering side

P/N ASM01Y0164-1G16

15" Reel Mounting component side

P/N ASM01Y0164-2G16

7" Reel Mounting soldering side

P/N ASM01Y0164-3G16

7" Reel Mounting component side

P/N ASM01Y0164-4G16

13" Reel Mounting soldering side

P/N ASM01Y0164-5G16

13" Reel Mounting component side

\* approval pending

 Standard pole sizes

 Available on demand. Minimum order quantity 5000 pieces per item.