

A Range IP44, IP55, IP56 Junction Boxes

- Plastic halogen material
- High performing
- Glow wire tested to IEC95-2-1
- AS boxes to 650c, ASH to 950c

With Stepped Glands and Press Fit Lids IP-44	
Reference	Description
A1	65 x 35 (round)
A2	80 x 35 (round)
A3	80 x 80 x 40



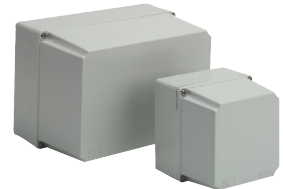
With smooth Walls and Grey Screw on Lids IP56	
Reference	Description
AS05	123 x 83 x 62
AS15	103 x 103 x 62
AS25	154 x 113 x 77
AS35	193 x 144 x 79
AS45	242 x 190 x 90
AS55	305 x 225 x 126
AS65	390 x 310 x 128
*Lid fixing by means of plastic screws c/w box	



With Smooth Walls and Transparent Screw on Lids IP56	
Reference	Description
AS35T	190 x 140 x 70
AS45T	240 x 190 x 90
AS55T*	300 x 220 x 150
AS65T*	380 x 300 x 150
*Lid fixing by means of plastic screws c/w box	



High Lid with Smooth Walls and Grey Screw Lids IP55	
Reference	Description
ASH15	110 x 110 x 112
ASH25	150 x 110 x 150
ASH35	150 x 150 x 150
ASH45	220 x 150 x 150
ASH55	300 x 220 x 150
*Lid fixing by means of plastic screws c/w box	



Metal Plate	
Reference	Description
PB1	for boxes AS3 - 35 - 35T
PB2	for boxes AS4 - 45 - 45T
PB3	for boxes AS5 - 55 - 55T
PB4	for boxes AS6 - 65 - 65T
PB5	for boxes ASH15 - ASH15T
PB6	for boxes ASH25 - ASH25T
PB7	for boxes ASH35 - ASH35T
PB8	for boxes ASH45 - ASH45T
PB9	for boxes ASH55 - ASH55T

