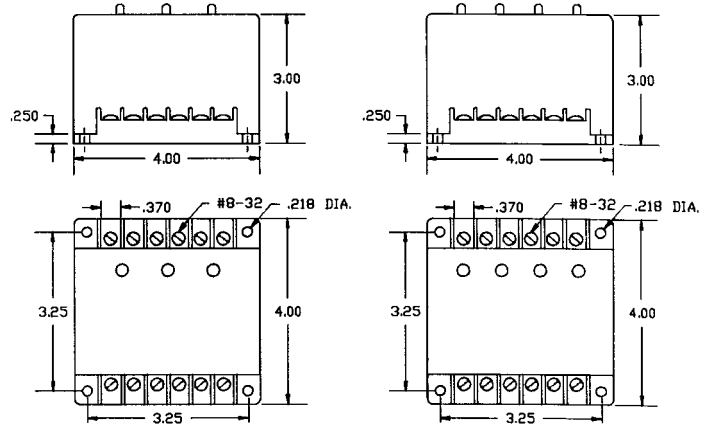


Triplexor



OPERATION

The Triplexor and Quadraplexor Alternating Relays are designed for use in multiple load installations that are required to alternate in sequence while assuring equal run time on all loads. They also allow for additional loads to run in the event of excess load requirements.

The Triplexor and Quadraplexor have the option of automatic alternations or external clocking alternations. When the factory installed jumper is in place the alternating action is initiated by a control switch, which is common with one side of the control voltage. When the jumper is removed the alternating action is initiated by an isolated normally open switch.

ARA-XXX-AFE Alternating Action

Triplexor: For automatic alternations a factory-installed jumper is in place between terminals 3 and 4. The alternating action is accomplished when the control switch between terminals 2 and 4 opens.

For external clocking alternations, remove the factory-installed jumper between terminals 3 and 4 and place an isolated normally open switch between terminals 2 and 3. The alternating action will occur each time this isolated switch is closed and then re-opened.

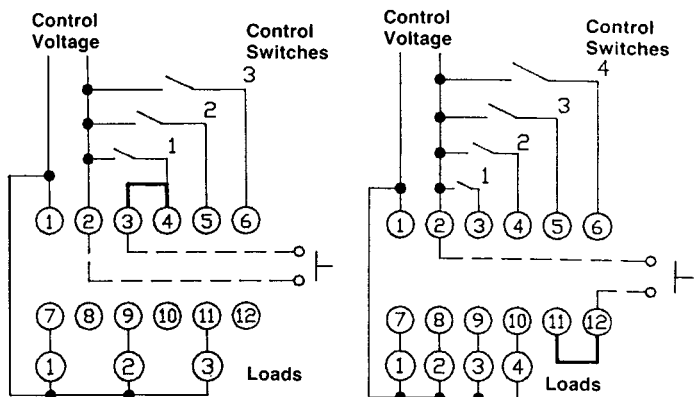
ARA-120-AGE

Quadraplexor: For automatic alternations, a factory installed jumper is in place between terminals 11 and 12. The alternating action is accomplished when the control switch between terminals 2 and 3 opens.

For external clocking alternations, remove the factory-installed jumper between terminals 11 and 12 and place an isolated normally open switch between terminals 2 and 12. The alternating action will occur each time this isolated switch is closed and then re-opened.

In the event of a power failure the Alternating Relays will return to their quiescent state and continue sequencing loads on one-at-a-time.

WIRING



SPECIFICATIONS

CONTROL VOLTAGE: 24, 120 VAC $\pm 10\%$, 50/60 Hz

CONTROL CURRENT: 2 mA

OUTPUT RATING

Triplexor: (3) 5 Amp Resistive, 1/6 hp, 211 VA @ 120 VAC, Inductive Externally Switched to terminal #2

Quadraplexor: (4) 5 Amp Resistive, 1/6 hp, 211 VA @ 120 VAC, Inductive Externally Switched to terminal #2

POWER REQUIRED: 3 VA (Approximately)

TEMPERATURES

Operate: -4° to 131° F (-20° to $+55^{\circ}$ C)
Storage: -40° to 185° F (-40° to $+85^{\circ}$ C)

DUTY CYCLE:

Continuous

LIFE EXPECTANCY

Mechanical: 10,000,000 Operations (Minimum)
Electrical: 100,000 Operations @ Rated Load

INDICATORS:

LED's Show Condition of Outputs

ENCLOSURE STYLE:

Style "E" Lexan[®] Surface Mounted

TERMINATIONS:

(12) #8-32 Screw Terminals

CATALOG NUMBERS

24 V Triplexor: ARA-24-AFE
120 V Triplexor: ARA-120-AFE
120 V Quadraplexor: ARA-120-AGE