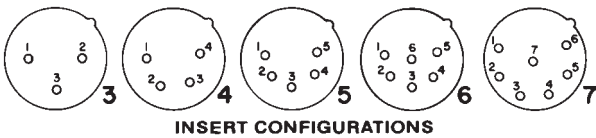


**Q-G® CORD PLUG CONNECTORS**

FACE VIEW OF PIN (MALE) INSERTS



**A(\*)F CORD PLUG**



Straight female cord plug with standard latchlock. Available in 3-7 pin versions.

**A(\*)FD CORD PLUG**



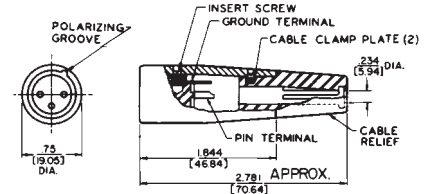
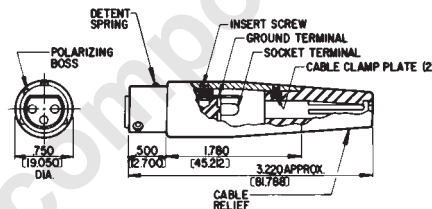
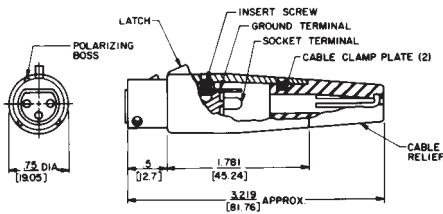
Straight female cord plug with FAS-DIS-CONNECT detent.

**A(\*)M CORD PLUG**



Straight male cord plug.

\*Number of insert contacts or pins must be specified to complete part number.



DIMENSIONS ARE FOR REFERENCE ONLY  $\frac{\text{Inch}}{\text{(mm)}}$

NOTE: Contact your Switchcraft Representative for price and delivery.