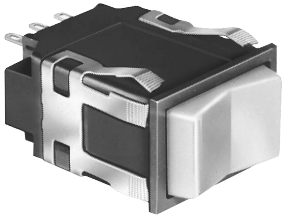


Manual Switches

Solid State Rocker

INCANDESCENT OR NON-LIGHTED DISPLAY



Rocker operators ordered separately.

FEATURES

- Hall effect reliability.
- Provides low voltage signals that interface with nearly all DC logic level loads.
- 5 VDC and 6-16 VDC supply voltage.
- 2 or 3-position operation.
- UL recognized.
- Lamps can be furnished installed or ordered separately.
- Lamp circuit independent of switch circuit.

Electrical Data	page 19
Rockers	pages 51, 52
Lamps and LEDs	page 58
Accessories	page 57
Mounting Dimensions	pages 59, 61

AML14 ORDER GUIDE

AML14 E	B	A	2	AA	01
Housing Type	Bezel Color	Incandescent Lamp Type	Terminal Type	Circuitry Code	Operating Action
AML14 E Rectangular Non-Lighted AML14 F Rectangular 1 Lamp Ckt. (A) AML14 G Rectangular 2 Lamp Ckts. (A & B)	B Black <p>① The "MICRO SWITCH" identification is shown on this side of the switch housing.</p>	A No Lamp Installed B 6 V Lamp* C 14 V Lamp* E 28 V Lamp*	2 .110 × .020 (Solder or Quick-Connect) 3 .025 × .025 (Printed Ckt., or Push-On)	One IC (Ckt. A): AA 5 V Sinking BA 6-16 V Sinking DA 4.5-24 VDC Two IC's (Ckts. A & B): AC 5 V Sinking BC 6-16 V Sinking DC 4.5-24 VDC	Insert Code Numbers from Operating Action Chart

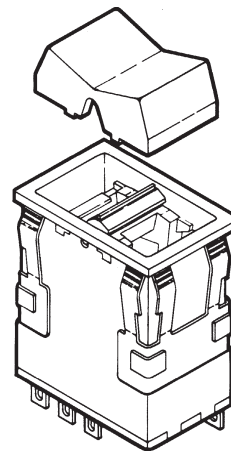
* Lamps will be installed per each lamp circuit specified in the Housing Type.

Example: **AML14EBA2AA01**
 Rectangular non-lighted rocker switch housing; black bezel; .110 × .020 terminals; with one 5 V sinking IC pack; two position operation.

OPERATING ACTION

2 Position:		
Maint.	01 None	Maint.
Mom.	02 None	Maint.
Maint.	03 None	Mom.
3-Position:**		
Maint.	04 Maint.	Maint.
Mom.	05 Maint.	Mom.
Maint.	06 Maint.	Mom.
Mom.	07 Maint.	Maint.

** 3-position switches must have two circuits specified in the listing (circuitry codes "AC" or "BC").

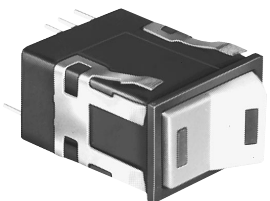


Rockers
ordered
separately

Manual Switches

Solid State Rocker

LED DISPLAY



Rocker operators with LED "window" ordered separately.

LEDs are not replaceable.

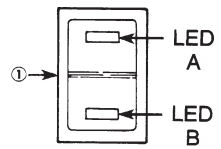
FEATURES

- Hall effect reliability.
- Rectangular, high efficiency LED's are flush with rocker surface, providing wide angle indication.
- Optional diode protection for the LED's.
- 5 thru 24 VDC devices have an internal resistor to maintain LED current at nominal 20 mA.
- LED circuit independent of switch circuit.
- UL recognized.

Electrical Data	page 19
Rockers	pages 51, 52
Lamps and LEDs	page 58
Accessories	page 57
Mounting Dimensions	pages 59, 61

AML16 ORDER GUIDE

AML16 F	B	B	2	AA	01	R	X
Housing Type	Bezel Color	LED Voltage	Terminal Type/ Diode Protection	Circuitry Code	Operating Action	LED Color (LED A)	LED Color (LED B)
AML16 F Rect. 1 LED	B Black	B V*	2 .110 × .020 (Solder or Quick-Connect)	One IC (Ckt. A): AA 5 V Sinking	Insert Code Numbers from Operating Action Chart	R Red	R Red
AML16 G Rect. 2 LED's		C 5 V	3 .025 × .025 (Printed Circuit, or Push-On)	DA 4.5-24 VDC Sinking		Y Yellow	Y Yellow
		D 10 V	8 .110 × .020 w/Diode Protection for LED	BA 6-16 V Sinking		G Green	G Green
		E 15 V		Two IC's (Ckts. A & B): AC 5 V Sinking		X No LED	X No LED
		F 24 V		BC 6-16 V Sinking			
				DC 4.5-24 VDC Sinking			



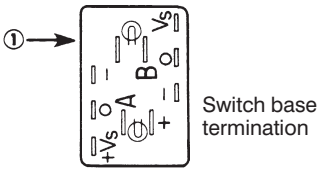
Manuals

* See LED application information for devices without current-limiting resistor, page 58.

Example: **AML16FBB2AA01RX**
Rectangular 1-LED illuminated rocker switch housing, black bezel; .110 × .020 terminals, with one 5 V sinking IC pack; 2-position operation.

CIRCUIT OUTPUT STATES

Ckt. A	Low (operated)	High	High
Ckt. B	High	High	Low (operated)



① The "MICRO SWITCH" identification is on this side of the switch housing.