

Part Number: AM2520EG/4SGD5V

Super Bright Green

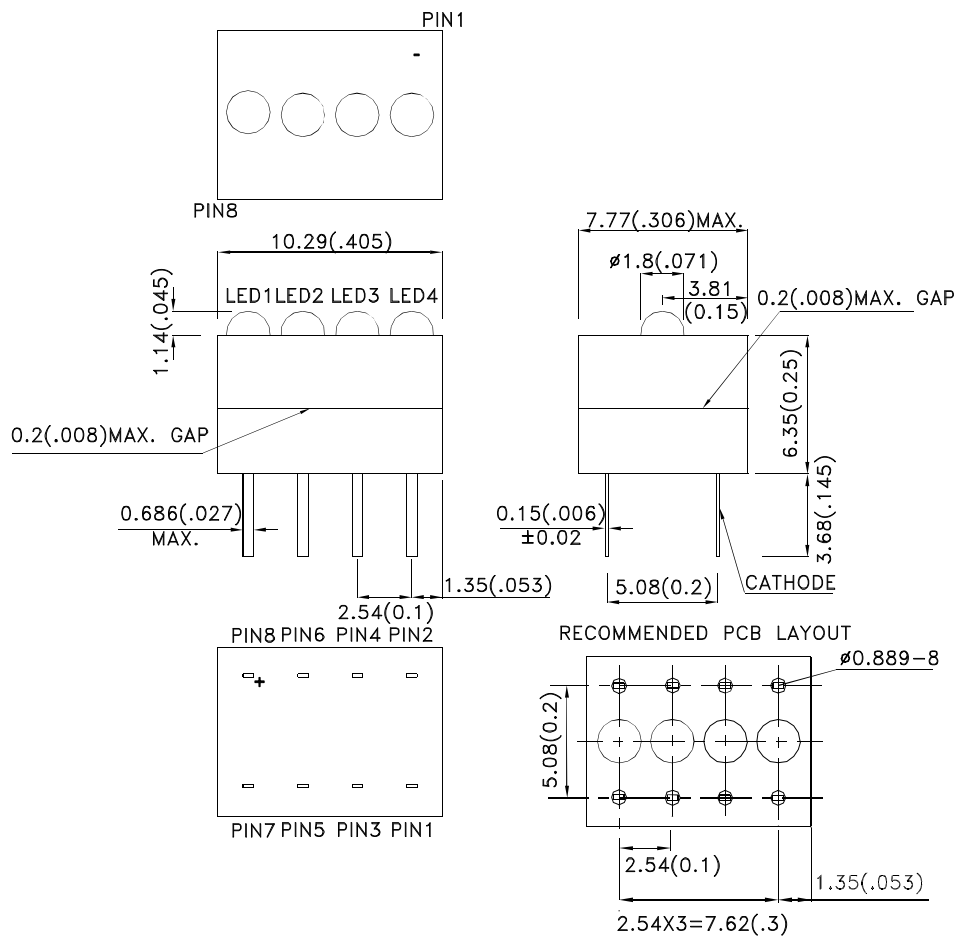
### Features

- Black case enhances contrast.
- Vibration and shock resistant.
- Housing UL rating : 94V-0.
- Housing material: type 66 nylon.
- 5V internal resistor.
- RoHS compliant.

### Description

The Super Bright Green source color devices are made with Gallium Phosphide Green Light Emitting Diode.

### Package Dimensions



#### Notes:

1. All dimensions are in millimeters (inches).
2. Tolerance is  $\pm 0.25 (0.01)$  unless otherwise noted.
3. Lead spacing is measured where the leads emerge from the package.
4. The specifications, characteristics and technical data described in the datasheet are subject to change without prior notice.



## Selection Guide

| Part No.        | Dice                     | Lens Type      | Iv (mcd) [2]<br>V= 5V |      | Viewing Angle [1] |
|-----------------|--------------------------|----------------|-----------------------|------|-------------------|
|                 |                          |                | Min.                  | Typ. | 2θ1/2             |
| AM2520EG/4SGD5V | Super Bright Green (GaP) | GREEN DIFFUSED | 1.8                   | 8    | 40°               |

Notes:

1. θ1/2 is the angle from optical centerline where the luminous intensity is 1/2 of the optical peak value.
2. Luminous intensity/ Luminous Flux: +/-15%.

## Electrical / Optical Characteristics at TA=25°C

| Symbol                | Parameter                | Device             | Typ. | Max. | Units | Test Conditions     |
|-----------------------|--------------------------|--------------------|------|------|-------|---------------------|
| $\lambda_{peak}$      | Peak Wavelength          | Super Bright Green | 565  |      | nm    | V <sub>F</sub> =5V  |
| $\lambda_D$ [1]       | Dominant Wavelength      | Super Bright Green | 568  |      | nm    | V <sub>F</sub> =5V  |
| $\Delta\lambda_{1/2}$ | Spectral Line Half-width | Super Bright Green | 30   |      | nm    | V <sub>F</sub> =5V  |
| I <sub>F</sub>        | Forward Current          | Super Bright Green | 11.5 | 17.5 | mA    | V <sub>F</sub> =5V  |
| I <sub>R</sub>        | Reverse Current          | Super Bright Green |      | 10   | uA    | V <sub>R</sub> = 5V |

Note:

1. Wavelength: +/-1nm.

## Absolute Maximum Ratings at TA=25°C

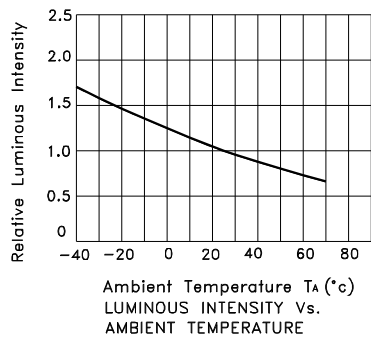
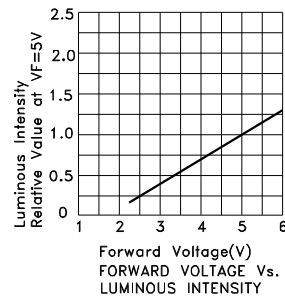
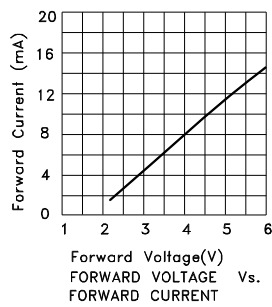
| Parameter                   | Super Bright Green  | Units |
|-----------------------------|---------------------|-------|
| Power dissipation           | 85                  | mW    |
| Forward Voltage             | 6                   | V     |
| Reverse Voltage             | 5                   | V     |
| Operating Temperature       | -40°C To +70°C      |       |
| Storage Temperature         | -40°C To +85°C      |       |
| Lead Solder Temperature [1] | 260°C For 3 Seconds |       |
| Lead Solder Temperature [2] | 260°C For 5 Seconds |       |

Notes:

1. 2mm below package base.
2. 5mm below package base.

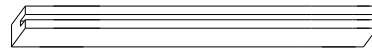
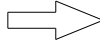
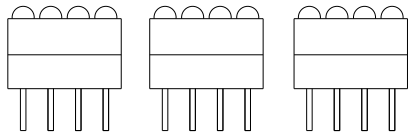


## Super Bright Green AM2520EG/4SGD5V

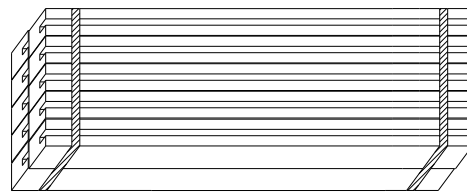


**PACKING & LABEL SPECIFICATIONS**

**AM2520EG/4SGD5V**



48PCS / IC TUBE




480pcs / 10pcs IC TUBE



OUTSIDE LABEL

10.56K / 10# BOX

|  |  |
|--|--|
| <h1>Kingbright</h1>  |  |
| P/NO: AM2520EGxxx  |  |
| QTY: 480 pcs   | Q.C. <span style="border: 1px solid black; border-radius: 50%; padding: 2px;">Q C<br/>xx xx xxxx<br/>PASSED</span> |
| S/N: XXXX  |  |
| CODE: XXX  |  |
| LOT NO:  |  |
| <br>xxxxxxxxxxxxxxxxxxxxxxxx |  |
| RoHS Compliant   |  |