

1

2

3

4

5

6

7

A

B

C

D

E

F

G

H

A

B

C

D

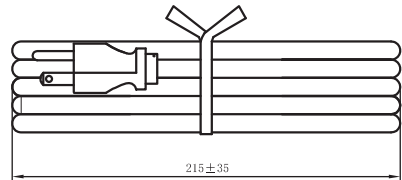
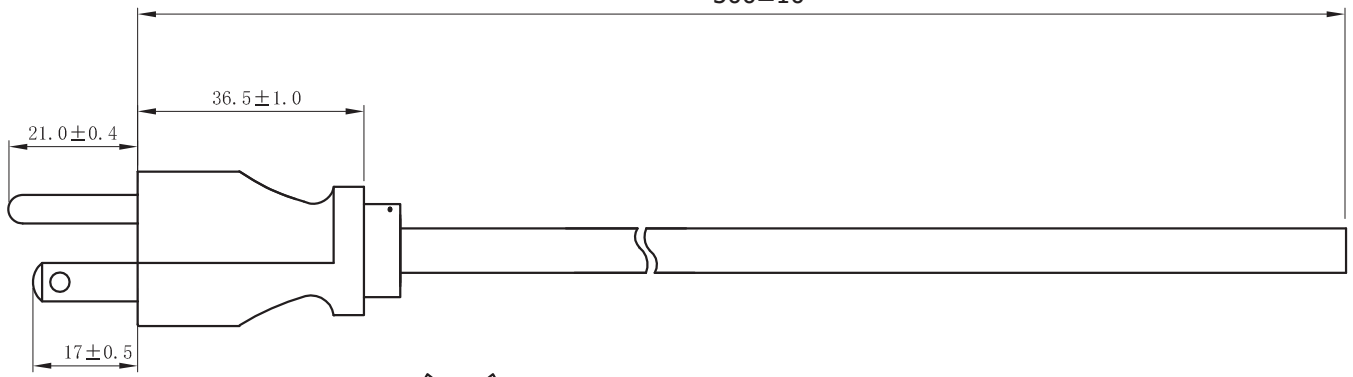
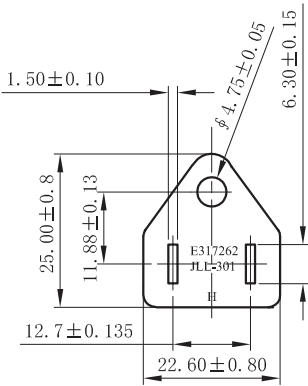
E

F

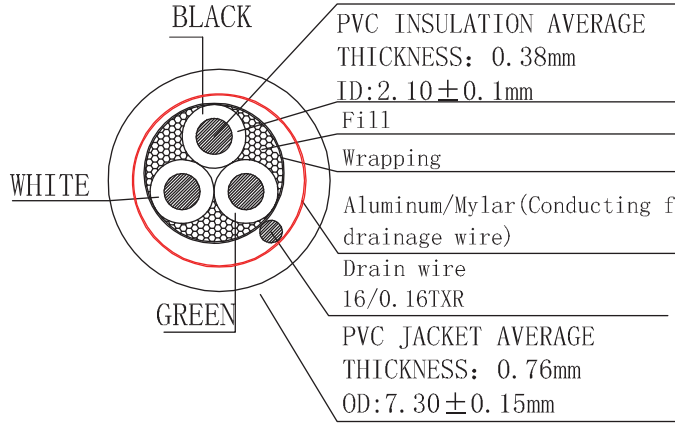
G

H

500±10



CONDUCTOR CONSTRUCTION(N/mm) :
41/0.16AS



PVC INSULATION AVERAGE THICKNESS: 0.38mm
ID: 2.10±0.1mm
Fill
Wrapping
Aluminum/Mylar(Conducting face drainage wire)
Drain wire
16/0.16TXR
PVC JACKET AVERAGE THICKNESS: 0.76mm
OD: 7.30±0.15mm

Material:

- E243711(UL) SVT 3 x 18AWG(0.824MM²)
VW-1 Shielded, 105°C 300V
- CSA 228191 SVT 3 x 18AWG(0.824MM²)
FT2 Shielded 105°C 300V -LF-
- Jacket Color: Black
- E- Green; L - Black; N - White

Electrical:

- 100% Open & Short Testing
- Insulation Resistance: 100MΩ (Min.)
- Voltage: 500V DC / 1 Min.

Unit: MM

Scale	1:1					Name
TOLERANCE				Drawn	12.27.11	Chappell
X.X	±0.40			Approved		
X.XX	±0.25					
X.XXX	±0.15					
Angle	±3°					
			Modification	Date	Name	

Item No. AK500-OE-7-0.5-R

Title Power Cord - SVT/Open End, Shielded, 105°C, 18AWG, 0.5 Meter

Drawing No.
rev00
Replace Sheet



1

2

3

4

5

6

7