

# AH Series

## Single-phase Dual-stage EMI Filters

These series range of double stage filters give superior performance when used in applications with low Impedance loads controlling pulsed, continuous and intermittent interference noise and where high levels of mains borne interference are present.



### FEATURES

- Double stage filter
- Medical Version available
- Superior Performance
- Chassis mounting

### APPLICATIONS

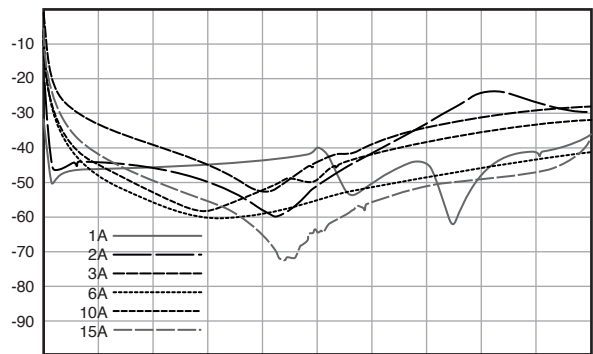
- Power Systems
- Electronic Equipment
- Frequency convertors
- Stepper motor drives
- UPS/Inverters

### SERIES SPECIFICATIONS

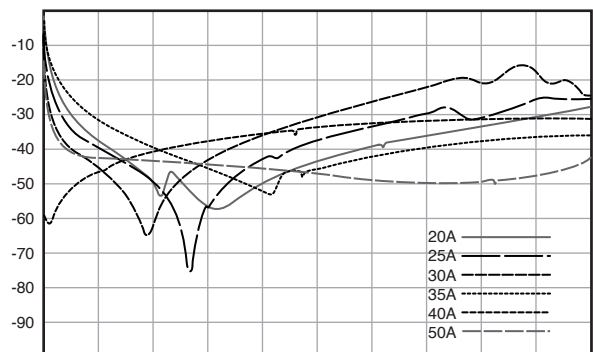
Standard Part No.	Rated current @40°C	Leakage current (mA) @250VAC/50Hz	Termination Tab	Screw	Weight (kg)
AH-01	1A	0.34	6.3 x 0.8		0.125
AH-02	2A	0.34	6.3 x 0.8		0.125
AH-03	3A	0.34	6.3 x 0.8		0.17
AH-06	6A*	0.34	6.3 x 0.8		0.17
AH-10	10A	0.34	6.3 x 0.8		0.17
AH-15	15A	0.34	6.3 x 0.8		0.26
AH-20	20A	0.73		M5	0.65
AH-25	25A	0.73		M5	0.65
AH-30	30A	0.73		M5	0.65
AH-35	35A*	0.73		M5	1
AH-40	40A	0.73		M5	1
AH-50	50A	0.73		M6	2

\*Not covered under NEMKO

### INSERTION LOSS



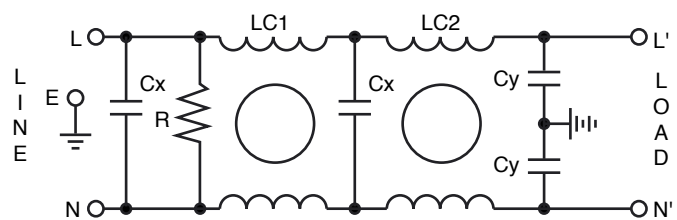
Start 30.00kHz Stop 30.00MHz



Start 30.00kHz Stop 30.00MHz

### CHARACTERISTICS

<b>Max. Cont. Oper. Voltage</b>	250VAC
<b>Operating Frequency</b>	50/60Hz
<b>Current ratings</b>	1A to 50A @40°C
<b>High Potential test voltage</b>	L to G 2120Vdc for 1 Minute; L to L 1414Vdc for 1 Minute
<b>Design</b>	corresponding to UL 60939-3, CSA 22.2 No.8-13 and IEC 60939
<b>Overload Capability</b>	135% of Rated current for 15 minutes
<b>Flammability</b>	corresponding to UL 94 V-0
<b>Temperature range</b>	-25°C to +85°C
<b>Climatic Category</b>	25/85/21
<b>Recommended Torque (Nm)</b>	M5: 1.0-2.0; M6: 1.25 - 2.5; M8: 2.5-5; M10: 3.5-7



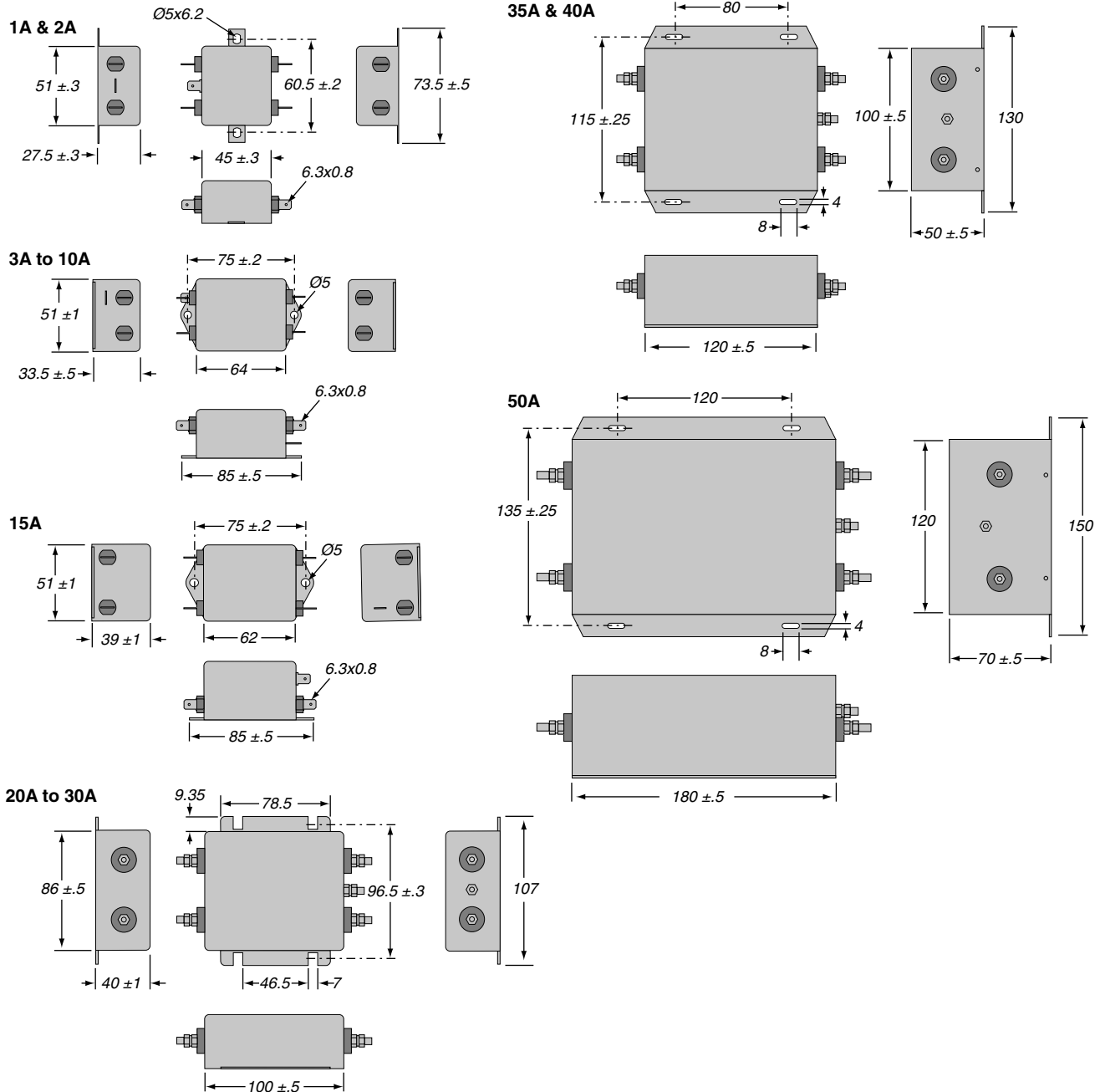
(continued)

# AH Series

## Single-phase Dual-stage EMI Filters

### DIMENSIONS

All dimensions in mm; Tolerances according to ISO2768-m



### ORDERING INFORMATION

**AH - 02**  
 Series      Current rating

#### Standard part numbers

AH-01	AH-20
AH-02	AH-25
AH-03	AH-30
AH-06	AH-35
AH-10	AH-40
AH-15	AH-50