

SPECIFICATIONS:

Materials:

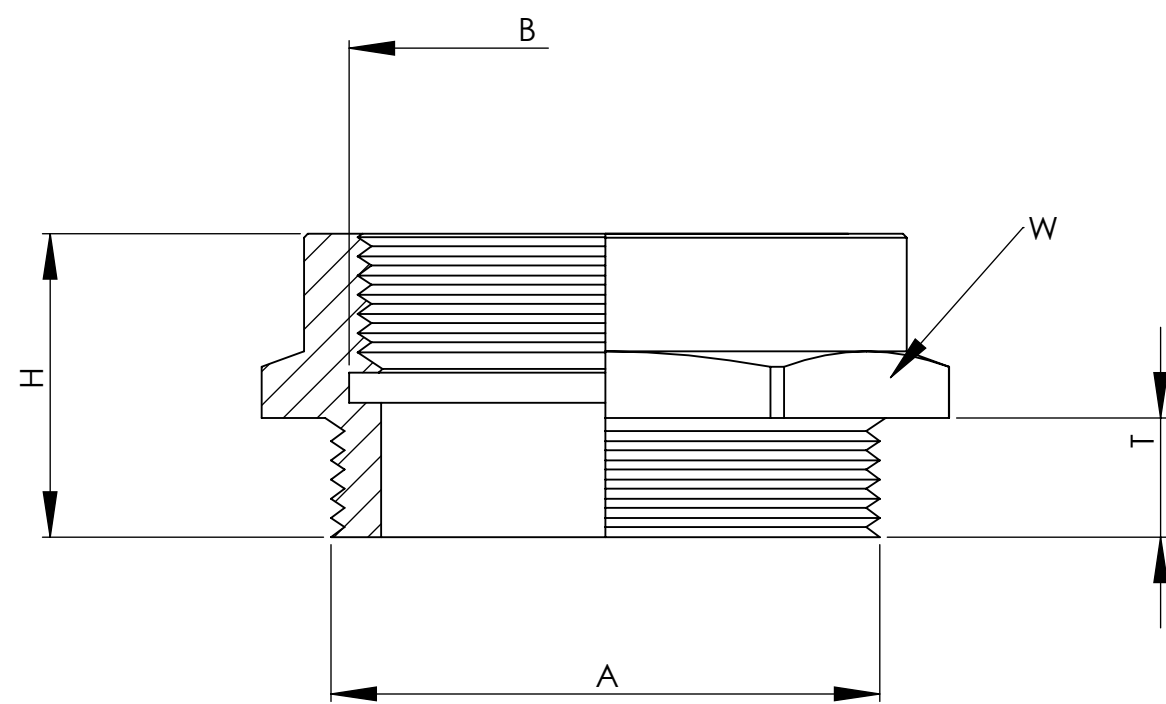
Body: Nickel Plated Brass

O-Ring: Buna-N (Optional)

Operating Temperature:

-40°F to 212°F (-40°C to 100°C)

Short term 266°F (130°C)



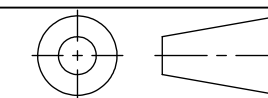
| PART NUMBER | MALE THREAD A | FEMALE THREAD B | WRENCHING FLATS W | THREAD LENGTH T | HEIGHT H |
|--------------------------|------------------|----------------------|------------------------|------------------------|------------------------|
| AG-0912-AL AG-1112-BR | PG 9 PG 11 | 1/2" NPT 1/2" NPT | .94 (24) .94 (24) | .25 (6) .24 (6) | .94 (24) .89 (22.7) |
| AG-1312-BR AG-1612-BR | PG 13.5 PG 16 | 1/2" NPT 1/2" NPT | .94 (24) .94 (24) | .26 (6.5) .26 (6.5) | .93 (23.5) .91 (23) |
| AG-2112-BR AG-2134-BR | PG 21 PG 21 | 1/2" NPT 3/4" NPT | 1.18 (30) 1.18 (30) | .27 (7) .27 (7) | .59 (15) .94 (24) |
| AG-2910-BR | PG 29 | 1" NPT | 1.57 (40) | .31 (8) | .79 (20) |

| | | | | | |
|--------------------------|------------------------|----------------------|------------------------|--------------------|------------------------|
| AM-1612-BR AM-2012-BR | M16 x 1.5 M20 x 1.5 | 1/2" NPT 1/2" NPT | .94 (24) .94 (24) | .24 (6) .24 (6) | .91 (23) .91 (23) |
| AM-2512-BR AM-2534-BR | M25 x 1.5 M25 x 1.5 | 1/2" NPT 3/4" NPT | 1.18 (30) 1.18 (30) | .27 (7) .27 (7) | .59 (15) 1.02 (26) |
| AM-3210-BR AM-3254-BR | M32 x 1.5 M32 x 1.5 | 1" NPT 1-1/4" NPT | 1.57 (40) 1.77 (45) | .31 (8) .31 (8) | 1.30 (33) 1.30 (33) |

NOTES:

- 1) GENERAL DIMENSIONS DRAWINGS.
- 2) DIMENSIONS [] ARE IN INCHES.
- 3) DIMENSIONS NOTED ARE FOR REFERENCE ONLY.

Third angle projection



14853 HINDSDALE AVE, SUITE D
CENTENNIAL, CO 80112-4240, USA
TEL: +1-303-699-1135
TOLL FREE: +1-800-456-9012
E MAIL: info@sealconusa.com,
WEBSITE: www.sealconusa.com

