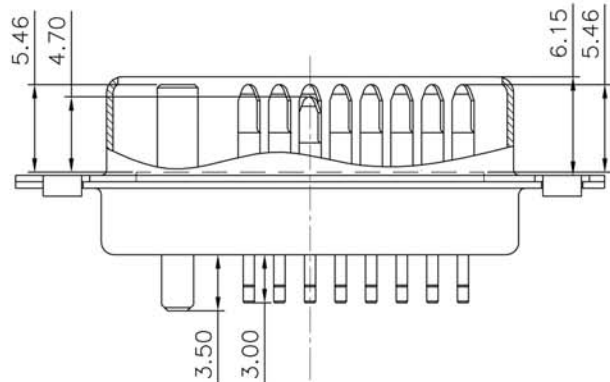


NOTE
 MATERIAL
 INSULATOR: PBT +30%GF
 CONTACTS: BRASS
 SHELL: SPCD
 CONTACT PLATING: GOLD PLATING OVER NICKEL
 ELECTRICAL SPECIFICATION
 CURRENT RATING: 1.5A;
 VOLTAGE RATING: 40V;
 CONTACT RESISTANCE: 30mΩ MAX.
 INSULATION RESISTANCE:1000MΩ MIN 500V DC.
 DIELECTRIC WITHSTANDING VOLTAGE:500V AC
 ENVIRONMENTAL
 OPERRATING TEMPERATURE: -20°C~80°C



-TOLERANCES-
 UNLESS OTHERWISE SPECIFIED

X.X ±0.30	X.X° ±3°
X.XX ±0.15	X.XX° ±1°
X.XXX ±0.10	X.XXX° ±0.5°



ITEM NO	A-DVI-1003-01-R
TITLE	DVI MALE, 24+1, PIN TYPE, G/F, WHT

ASSMANN
 Electronics, Inc.

1840 W. Drake Drive, Suite 101 - Tempe, AZ 85283
 Toll Free: 1-877-277-6266 Email: info@usa-assmann.com

THIS DRAWING IS UNPUBLISHED
 © Copyright 2008 by Assmann Electronic Components
 All International Rights Reserved