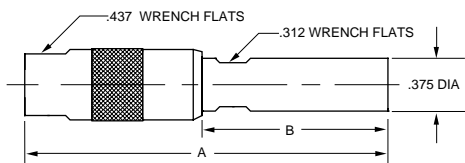


STANDARD & MINI-WECO COAX PATCH PLUGS

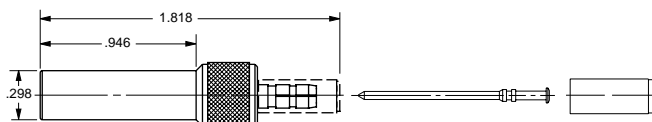


PATCH PLUG

SHIELD CRIMP 50Ω RCA Center pin .070" A=2.73" B=1.50"
75Ω WE Center pin .090" A=2.45" B=1.22"

PL1C-△
PL1WC-△

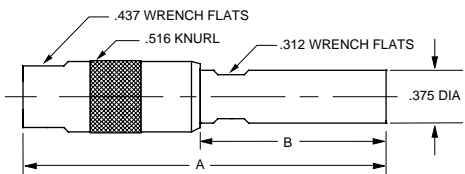
(WECO 358 type)



PATCH PLUG

STANDARD BNC STRIP DIMENSION
CRIMP CONTACT, CRIMP SHIELD
(WECO 440 Type)

PL11SC-△



PATCH PLUG

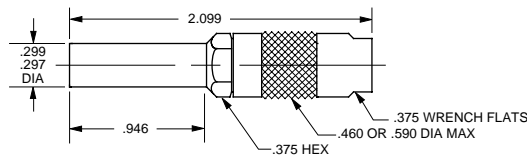
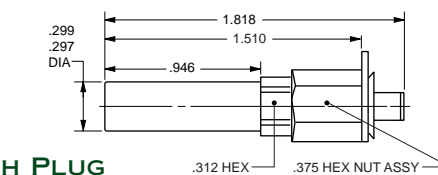
CABLE ENTRY, FIELD SERVICEABLE

For RG58 **50Ω RCA Center pin .070"** A=2.80" B=1.568" **PL1**
For RG59 **50Ω RCA Center pin .070"** A=2.737" B=1.505" **PL2**
For RG58 **75Ω WE Center pin .090"** A=2.52" B=1.288" **PL1W**
For RG59 **75Ω WE Center pin .090"** A=2.457" B=1.225" **PL2W**

PATCH PLUG

STANDARD CRIMP PLUG
WITH LOCKING TAB
(WECO 440 Type)

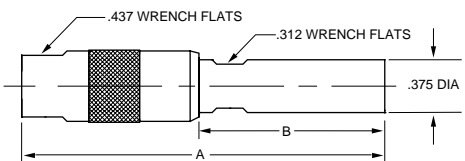
PL11SCLT-△



PATCH PLUG

SOLDER CONTACT, CRIMP SHIELD
(WECO 440 Type)

PL11C-△



TERMINATION PLUG

NO CHAIN

50Ω RCA Center pin .070"

A=2.81" B=1.58"

TP-1-R

NO CHAIN

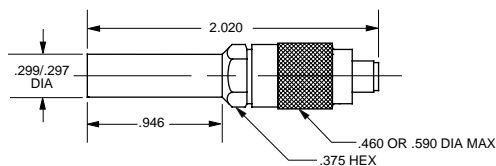
75Ω WE Center pin .090"

A=2.45" B=1.25"

TPW-1-R

For other chain options, see page 45.

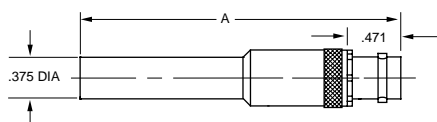
(WECO 340C type)



PATCH PLUG

CRIMP CONTACT, CRIMP SHIELD
(WECO 440 Type)

PL11AC-△



ADAPTERS

PATCH PLUG TO BNC/TNC

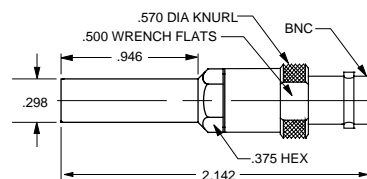
50Ω RCA plug Center pin .070" 50Ω BNC A =2.774" **AD1**

50Ω RCA plug Center pin .070" 50Ω TNC A =2.774" **ADH1**

75Ω WE Center pin .090" 75Ω BNC A =2.83" **AD1W**

75Ω WE Center pin .090" 75Ω TNC A =2.83" **ADH1W**

(WECO 358 type)



ADAPTER

75Ω MINATURE PATCH PLUG (MINI-WECO TYPE)
TO 75Ω BNC

ADMW12

△ - Refers to cable group table, see pages 91-133. R-Resistance