

Guardian Electric Manufacturing Co.

1425 Lake Avenue

Woodstock, IL 60098

Phone: (815) 334-3600 • Fax: (815) 337-0377

Email: info@guardian-electric.com • Web Address: www.guardian-electric.com**All Categories > Electromechanical Solenoids > DC Frame Solenoids > Latching Type DC Frame Solenoids > Item # A420-067916-00****Item # A420-067916-00, Model 28L Latching DC Frame Solenoid**

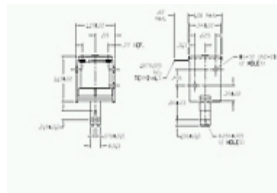
UL Certified / RoHS Compliant Solenoid

This solenoid can be customized to fit your specific application!

All Guardian Solenoids are compliant with RoHS Directive 2002/95/EC

Duty Cycle*Continuous:* 100% On Time*Intermittent:* (On Time) / (On + Off Time) x 100

Note: Exceeding the duty cycle rating may result in overheating and solenoid failure.

Mounting: Threaded holes in the frame (for details see spec sheets)[larger image](#)[Specifications](#) · [Pull Force](#)**Specifications**

Model No.	28L-C-12D
Duty Cycle	Continuous
'On' Time	100 %
Volts	12 VDC
Resistance	24 ?
Power	6.3 W
Total Weight	1.7 oz
Plunger Weight	0.3 oz
Holding Force	48 oz
UL Recognition	Recognized under the component recognition program of Underwriters Laboratories, Inc.
RoHS	These parts comply with RoHS directive 2002/95/EC
Current	500 mA

Pull Force

Stroke 0.050 in	25 oz
Stroke 0.125 in	10 oz
Stroke 0.250 in	4 oz
Stroke 0.375 in	2 oz
Stroke 0.500 in	1 oz

[Print](#)[Back](#)