



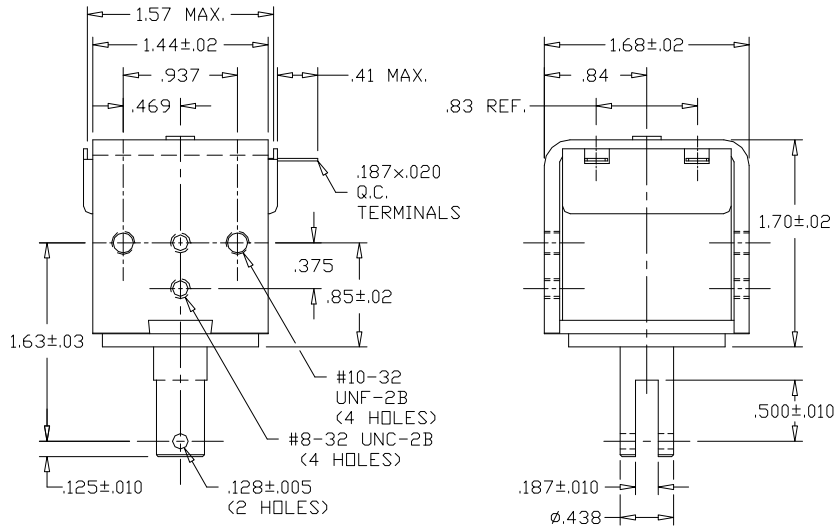
GUARDIAN Electric Manufacturing

ISO 9001 / AS9100 Certified Company

Woodstock, IL 60098 Ph. (815)334-3600 Fax (815)337-0377

Or visit us at our website www.guardian-electric.com

Model 2HD DC Frame Solenoid



Solenoid shown energized and fully seated.

Spring kits are available (consult factory).

Total Weight: 11.7 oz.

Plunger Weight: 1.2 oz.


Model No.	Part No.	Duty Cycle	Voltage	Resistance (Ω)	Power (W)	Current
2HD-I-12D	A420-065493-00	Intermittent	12VDC	5.8	26.1	2.07 A
2HD-C-12D	A420-065492-00	Continuous	12VDC	18.1	8.4	663 mA
2HD-I-24D	A420-065495-00	Intermittent	24VDC	22.6	26.8	1.06 A
2HD-C-24D	A420-065494-00	Continuous	24VDC	71	8.5	338 mA

When ordering, please refer to Part No., as listed above.

Consult factory for custom configurations.

Stroke (in.)	Pull Force (oz.)								Holding Force (oz.)
	0.050	0.125	0.250	0.375	0.500	0.625	0.750	1.000	
Continuous Duty	100	48	15	8	4	2	1	n/a	155
Intermittent Duty	125	93	70	32	20	15	12	10	191

UL Recognition

Recognized under the  Component Recognition Program of **Underwriters Laboratories, Inc.**

Continuous Duty

100% 'On' Time

Intermittent Duty

25% 'On' Time, (100 Seconds 'On' Max. Followed By 300 Seconds 'Off' Min.)

RoHS

These parts comply with **RoHS** Directive 2002/95/EC